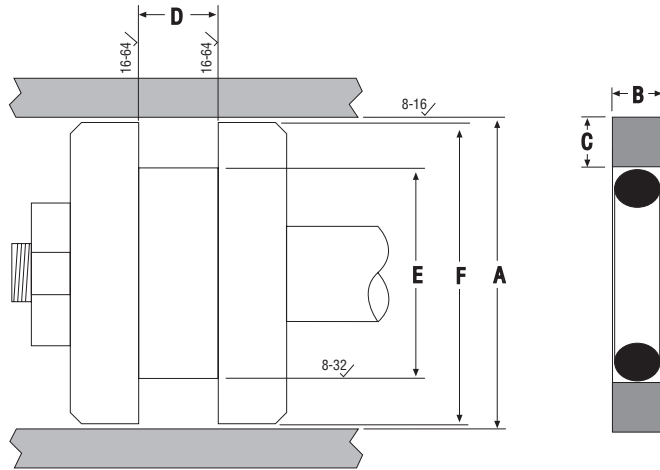


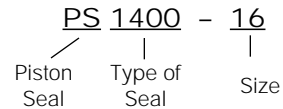
STYLE PS1400 GLASS FILLED PTFE PISTON SEALS

The PS1400 seals offer low friction and high strength in a compact double-acting piston seal design. The PTFE seal ring, combined with rubber energizer, assures positive contact with the dynamic surface. The PS1400 is designed to fit ANSI/B93.32-1973 groove standards. Piston diameter "F" dimensions are given for pistons without wear rings.



SEAL INFORMATION	
MATERIAL	15% GLASS FILLED PTFE SEAL RUBBER ENERGIZER
TEMPERATURE RANGE	-40° TO +220° F
PRESSURE RANGE	0 TO 5,000 PSI

PART NUMBERS



Part Number	A Bore Diameter Tol. ±0.002	B & C Seal Height & Cross Section	D Groove Width Tol. ±0.002	E Groove Diameter Tol. ±0.002	F Piston Diameter Tol. ±0.001	List Price
PS1400-16	1.000	0.070 ±0.005	0.083	0.740	0.997	\$ 2.29
PS1400-18	1.125	0.070 ±0.005	0.083	0.865	1.122	3.08
PS1400-20	1.250	0.070 ±0.005	0.083	0.990	1.247	2.54
PS1400-22	1.375	0.070 ±0.005	0.083	1.115	1.372	4.29
PS1400-24	1.500	0.070 ±0.005	0.083	1.240	1.497	2.65
PS1400-26	1.625	0.109 ±0.010	0.122	1.233	1.622	2.69
PS1400-28	1.750	0.109 ±0.010	0.122	1.358	1.747	2.76
PS1400-30	1.875	0.109 ±0.010	0.122	1.483	1.872	5.38
PS1400-32	2.000	0.115 ±0.010	0.129	1.608	1.996	2.86
PS1400-34	2.125	0.115 ±0.010	0.129	1.733	2.121	5.38
PS1400-36	2.250	0.115 ±0.010	0.129	1.858	2.246	2.97
PS1400-38	2.375	0.115 ±0.010	0.129	1.983	2.371	3.00
PS1400-40	2.500	0.115 ±0.010	0.129	2.108	2.496	3.01
PS1400-44	2.750	0.115 ±0.010	0.129	2.358	2.746	3.05
PS1400-48	3.000	0.115 ±0.010	0.129	2.608	2.996	3.12
PS1400-50	3.125	0.115 ±0.010	0.129	2.733	3.121	11.39
PS1400-52	3.250	0.115 ±0.010	0.129	2.858	3.246	3.18
PS1400-54	3.375	0.115 ±0.010	0.129	2.983	3.371	5.88
PS1400-56	3.500	0.115 ±0.010	0.129	3.108	3.496	3.26
PS1400-58	3.625	0.115 ±0.010	0.129	3.233	3.621	6.04
PS1400-60	3.750	0.115 ±0.010	0.129	3.358	3.746	3.54
PS1400-64	4.000	0.115 ±0.010	0.129	3.608	3.996	3.60
PS1400-68	4.250	0.115 ±0.010	0.129	3.858	4.246	3.67
PS1400-70.4	4.400	0.115 ±0.010	0.129	4.008	4.396	11.72
PS1400-72	4.500	0.115 ±0.010	0.129	4.108	4.496	4.03
PS1400-76	4.750	0.115 ±0.010	0.129	4.358	4.746	6.25
PS1400-80	5.000	0.115 ±0.010	0.129	4.608	4.996	4.49
PS1400-84	5.250	0.115 ±0.010	0.129	4.858	5.246	4.81
PS1400-88	5.500	0.115 ±0.010	0.129	5.108	5.496	4.94
PS1400-92	5.750	0.143 ±0.010	0.159	5.232	5.746	5.26

(bronze filled PTFE w/quattro expander ring)

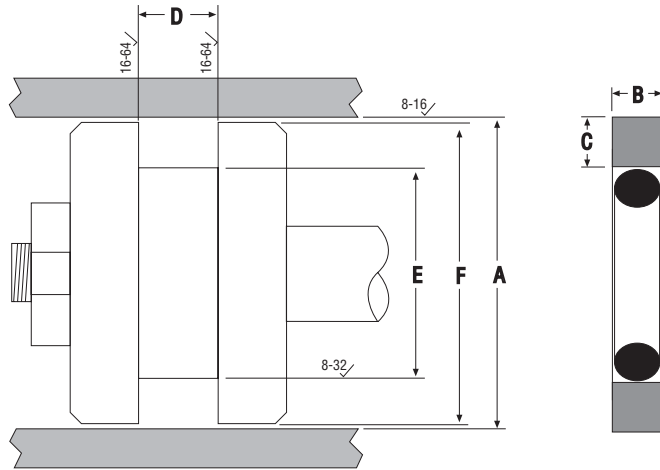
STYLE PS1400 GLASS FILLED PTFE PISTON SEALS

<u>Part Number</u>	<u>A Bore Diameter</u> Tol. ±0.002	<u>B & C Seal Height & Cross Section</u>	<u>D Groove Width</u> Tol. ±0.002	<u>E Groove Diameter</u> Tol. ±0.002	<u>F Piston Diameter</u> Tol. ±0.001	<u>List Price</u>
PS1400-94	5.875	0.143 ±0.010	0.159	5.357	5.871	\$ 13.44
PS1400-96	6.000	0.143 ±0.010	0.159	5.482	5.996	5.53
PS1400-98	6.125	0.143 ±0.010	0.159	5.607	6.121	11.79
PS1400-100	6.250	0.143 ±0.010	0.159	5.732	6.246	5.89
PS1400-104	6.500	0.143 ±0.010	0.159	5.982	6.496	7.00
PS1400-112	7.000	0.143 ±0.010	0.159	6.482	6.996	7.20
PS1400-116	7.250	0.143 ±0.010	0.159	6.732	7.246	7.20
PS1400-120	7.500	0.143 ±0.010	0.159	6.982	7.496	7.21
PS1400-128	8.000	0.143 ±0.010	0.159	7.482	7.996	7.31
PS1400-130	8.125	0.143 ±0.010	0.159	7.607	8.121	16.15
PS1400-132	8.250	0.143 ±0.010	0.159	7.732	8.246	17.72
PS1400-136	8.500	0.143 ±0.010	0.159	7.982	8.496	20.68
PS1400-144	9.000	0.143 ±0.010	0.159	8.482	8.996	21.73
PS1400-152	9.500	0.143 ±0.010	0.159	8.982	9.496	28.01
PS1400-160	10.000	0.143 ±0.010	0.159	9.482	9.996	30.69
PS1400-168	10.500	0.143 ±0.010	0.159	9.982	10.496	39.22
PS1400-176	11.000	0.143 ±0.010	0.159	10.482	10.996	42.46
PS1400-184	11.500	0.143 ±0.010	0.159	10.982	11.496	43.51
PS1400-192	12.000	0.143 ±0.010	0.159	11.482	11.996	45.11
PS1400-200	12.500	0.143 ±0.010	0.159	11.982	12.496	47.52
PS1400-208	13.000	0.143 ±0.010	0.159	12.482	12.996	58.07
PS1400-224	14.000	0.143 ±0.010	0.159	13.482	13.996	70.44

For a professional analysis of seal failure, send your damaged seals to our Engineering Department.

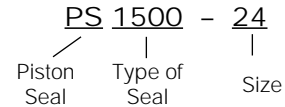
STYLE PS1500 POLYURETHANE PISTON SEALS

Totally interchangeable with Style PS1400 PTFE piston seals, Style PS1500 piston seals are molded from tough 60 shore D durometer polyurethane. During the molding process, a .002" thick band of molybdenum is molded into the outside diameter of the seal ring for reduced friction. PS1500 Piston Seals are easily stretched over the piston and recover rapidly to permit immediate installation and assembly. Special features include a low friction surface and superior cut strength with the elimination of the "cold flow" characteristics found in PTFE seals. Piston diameter "F" dimensions are given for pistons without wear rings.



SEAL INFORMATION	
MATERIAL	POLYURETHANE SEAL RUBBER ENERGIZER
TEMPERATURE RANGE	-65° TO +220° F
PRESSURE RANGE	0 TO 5,000 PSI

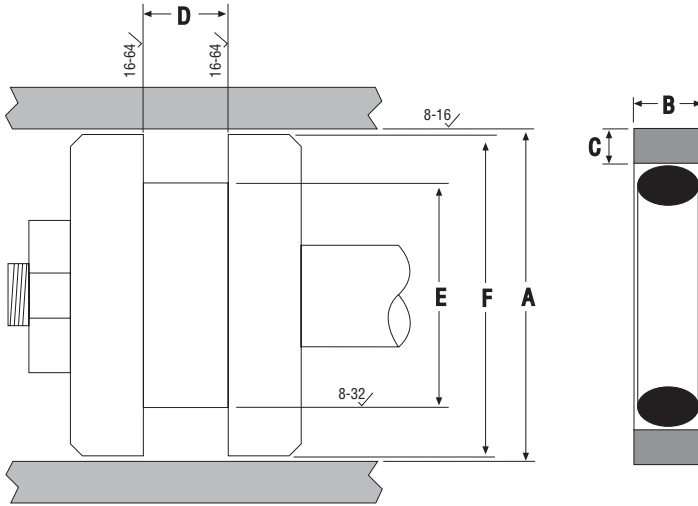
PART NUMBERS



Part Number	A Bore Diameter Tol. ±0.002	B & C Seal Height & Cross Section	D Groove Width Tol. ±0.002	E Groove Diameter Tol. ±0.002	F Piston Diameter Tol. ±0.001	List Price
PS1500-24	1.500	0.070 ±0.005	0.083	1.240	1.497	\$ 2.92
PS1500-28	1.750	0.109 ±0.005	0.122	1.358	1.747	3.04
PS1500-32	2.000	0.115 ±0.006	0.129	1.608	1.996	3.16
PS1500-36	2.250	0.115 ±0.006	0.129	1.858	2.246	3.24
PS1500-38	2.375	0.115 ±0.006	0.129	1.983	2.371	3.26
PS1500-40	2.500	0.115 ±0.006	0.129	2.108	2.496	3.28
PS1500-44	2.750	0.115 ±0.006	0.129	2.358	2.746	3.34
PS1500-48	3.000	0.115 ±0.006	0.129	2.608	2.996	3.42
PS1500-52	3.250	0.115 ±0.006	0.129	2.858	3.246	3.50
PS1500-56	3.500	0.115 ±0.006	0.129	3.108	3.496	3.60
PS1500-60	3.750	0.115 ±0.006	0.129	3.358	3.746	3.68
PS1500-64	4.000	0.115 ±0.006	0.129	3.608	3.996	3.92
PS1500-68	4.250	0.115 ±0.006	0.129	3.858	4.246	4.04
PS1500-72	4.500	0.115 ±0.006	0.129	4.108	4.496	4.46
PS1500-76	4.750	0.115 ±0.006	0.129	4.358	4.746	4.60
PS1500-80	5.000	0.115 ±0.006	0.129	4.608	4.996	4.92
PS1500-84	5.250	0.115 ±0.006	0.129	4.858	5.246	5.24
PS1500-88	5.500	0.115 ±0.006	0.129	5.108	5.496	5.52
PS1500-92	5.750	0.143 ±0.007	0.159	5.232	5.746	6.10
PS1500-96	6.000	0.143 ±0.007	0.159	5.482	5.996	7.82
PS1500-104	6.500	0.143 ±0.007	0.159	5.982	6.496	8.22
PS1500-112	7.000	0.143 ±0.007	0.159	6.482	6.996	8.68
PS1500-136	8.500	0.143 ±0.007	0.159	7.982	8.494	9.86

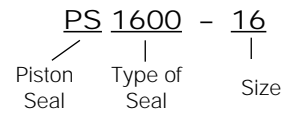
STYLE PS1600 GLASS FILLED PTFE PISTON SEALS

Note: Piston diameter "F" dimensions are given for pistons without wear rings.



SEAL INFORMATION	
MATERIAL	15% GLASS FILLED PTFE SEAL RUBBER ENERGIZER
TEMPERATURE RANGE	-40° TO +220° F
PRESSURE RANGE	0 TO 5,000 PSI

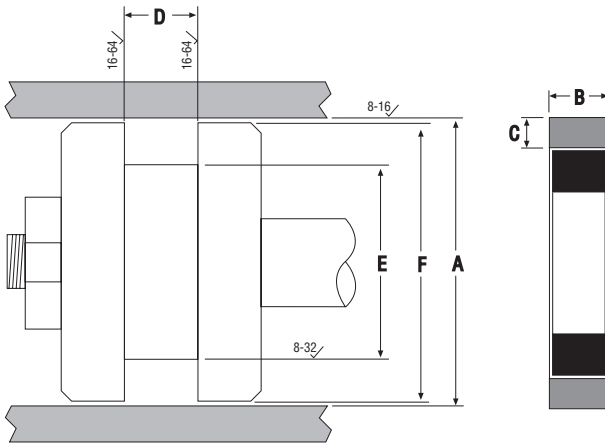
PART NUMBERS



Part Number	A	B	C	D	E	F	List Price
	Bore Diameter Tol. ±.001	Seal Height Tol. +.005/-0	Seal Cross Section Tol. +.005/-0	Groove Width Tol. +.003/-0	Groove Diameter Tol. +0/-0.003	Piston Diameter	
PS1600-16	1.000	0.088	0.055	0.094	0.787	0.999 +0/-0.003	\$ 3.53
PS1600-18	1.125	0.088	0.055	0.094	0.912	1.124 +0/-0.003	3.61
PS1600-20	1.250	0.088	0.055	0.094	1.037	1.249 +0/-0.003	3.70
PS1600-22	1.375	0.088	0.055	0.094	1.162	1.374 +0/-0.003	3.77
PS1600-24	1.500	0.088	0.055	0.094	1.287	1.499 +0/-0.003	3.87
PS1600-26	1.625	0.088	0.055	0.094	1.412	1.624 +0/-0.003	4.01
PS1600-28	1.750	0.088	0.055	0.094	1.537	1.749 +0/-0.003	4.37
PS1600-30	1.875	0.120	0.060	0.126	1.598	1.874 +0/-0.003	4.51
PS1600-32	2.000	0.120	0.060	0.126	1.723	1.999 +0/-0.003	4.88
PS1600-36	2.250	0.120	0.060	0.126	1.937	2.249 +0/-0.003	5.19
PS1600-38	2.375	0.120	0.060	0.126	2.098	2.374 +0/-0.003	5.43
PS1600-40	2.500	0.120	0.060	0.126	2.223	2.499 +0/-0.003	5.43
PS1600-44	2.750	0.150	0.090	0.157	2.348	2.749 +0/-0.004	6.49
PS1600-48	3.000	0.150	0.090	0.157	2.603	2.999 +0/-0.004	8.35
PS1600-52	3.250	0.150	0.090	0.157	2.853	3.249 +0/-0.004	8.82
PS1600-56	3.500	0.150	0.090	0.157	3.103	3.499 +0/-0.004	9.07
PS1600-60	3.750	0.150	0.090	0.157	3.353	3.749 +0/-0.004	9.12
PS1600-64	4.000	0.150	0.090	0.157	3.603	3.999 +0/-0.004	9.32
PS1600-68	4.250	0.150	0.090	0.157	3.853	4.249 +0/-0.004	9.29
PS1600-72	4.500	0.150	0.090	0.157	4.103	4.499 +0/-0.004	9.41
PS1600-76	4.750	0.150	0.090	0.157	4.353	4.749 +0/-0.004	11.47
PS1600-80	5.000	0.150	0.090	0.157	4.603	4.999 +0/-0.004	11.68
PS1600-84	5.250	0.150	0.090	0.157	4.853	5.249 +0/-0.004	12.47
PS1600-88	5.500	0.150	0.090	0.157	5.103	5.499 +0/-0.004	13.23
PS1600-92	5.750	0.150	0.090	0.157	5.353	5.749 +0/-0.004	16.18
PS1600-96	6.000	0.287	0.120	0.293	5.305	5.999 +0/-0.005	18.36
PS1600-112	7.000	0.287	0.120	0.293	6.305	6.999 +0/-0.005	27.85

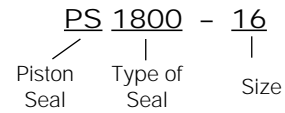
STYLE PS1800 GLASS FILLED PTFE PISTON SEALS

The PS1800 provides low friction, high strength piston sealing. The PS1800 also provides double-acting piston sealing in a compact design that meets the requirements of ANSI/B93-32-1973. Note: Piston diameter "F" dimensions are given for pistons without wear rings.



SEAL INFORMATION	
MATERIAL	15% GLASS FILLED PTFE SEAL RUBBER ENERGIZER
TEMPERATURE RANGE	-40° TO +220° F
PRESSURE RANGE	0 TO 5,000 PSI

PART NUMBERS



Part Number	A Bore Diameter Tol. ±.002	B Seal Height	C Seal Cross Section	D Groove Width Tol. ±.002	E Groove Diameter Tol. ±.004	F Piston Diameter	List Price
PS1800-16	1.000	0.116-0.121	0.067-0.073	0.129	0.690	0.999 +0/-0.005	\$ 3.39
PS1800-20	1.250	0.116-0.121	0.067-0.073	0.129	0.940	1.249 +0/-0.005	3.46
PS1800-24	1.500	0.116-0.121	0.067-0.073	0.129	1.190	1.499 +0/-0.005	3.56
PS1800-28	1.750	0.116-0.121	0.067-0.073	0.129	1.440	1.749 +0/-0.005	3.92
PS1800-32	2.000	0.116-0.121	0.067-0.073	0.129	1.690	1.999 +0/-0.005	4.77
PS1800-36	2.250	0.116-0.121	0.067-0.073	0.129	1.940	2.249 +0/-0.005	5.32
PS1800-40	2.500	0.116-0.121	0.067-0.073	0.129	2.190	2.499 +0/-0.005	5.38
PS1800-44	2.750	0.116-0.121	0.067-0.073	0.129	2.440	2.749 +0/-0.005	6.47
PS1800-44A	2.750	0.269-0.274	0.087-0.093	0.284	2.190	2.749 +0/-0.005	6.75
PS1800-48	3.000	0.269-0.274	0.087-0.093	0.284	2.440	2.999 +0/-0.006	6.93
PS1800-52	3.250	0.269-0.274	0.087-0.093	0.284	2.690	3.249 +0/-0.006	8.23
PS1800-56	3.500	0.269-0.274	0.087-0.093	0.284	2.940	3.499 +0/-0.006	9.07
PS1800-60	3.750	0.269-0.274	0.087-0.093	0.284	3.190	3.749 +0/-0.006	10.30
PS1800-64	4.000	0.269-0.274	0.087-0.093	0.284	3.440	3.999 +0/-0.006	11.45
PS1800-68	4.250	0.269-0.274	0.087-0.093	0.284	3.690	4.249 +0/-0.006	13.23
PS1800-72	4.500	0.269-0.274	0.087-0.093	0.284	3.940	4.499 +0/-0.006	13.89
PS1800-74	4.625	0.269-0.274	0.087-0.093	0.284	4.078	4.624 +0/-0.007	14.20
PS1800-76	4.750	0.269-0.274	0.087-0.093	0.284	4.190	4.749 +0/-0.006	14.31
PS1800-80	5.000	0.269-0.274	0.087-0.093	0.284	4.440	4.999 +0/-0.006	14.99
PS1800-84	5.250	0.362-0.367	0.137-0.147	0.379	4.488	5.249 +0/-0.007	17.66
PS1800-88	5.500	0.362-0.367	0.137-0.147	0.379	4.738	5.499 +0/-0.007	19.74
PS1800-90	5.625	0.362-0.367	0.137-0.147	0.379	4.863	5.624 +0/-0.007	20.67
PS1800-92	5.750	0.362-0.367	0.137-0.147	0.379	4.988	5.749 +0/-0.007	21.32
PS1800-96	6.000	0.362-0.367	0.137-0.147	0.379	5.238	5.999 +0/-0.007	22.90
PS1800-100	6.250	0.362-0.367	0.137-0.147	0.379	5.488	6.249 +0/-0.007	23.11
PS1800-104	6.500	0.362-0.367	0.137-0.147	0.379	5.738	6.499 +0/-0.007	23.11
PS1800-112	7.000	0.362-0.367	0.137-0.147	0.379	6.238	6.999 +0/-0.007	23.53
PS1800-116	7.250	0.362-0.367	0.137-0.147	0.379	6.488	7.249 +0/-0.007	25.56
PS1800-120	7.500	0.362-0.367	0.137-0.147	0.379	6.738	7.499 +0/-0.007	23.60
PS1800-128	8.000	0.362-0.367	0.137-0.147	0.379	7.238	7.999 +0/-0.007	26.29
PS1800-132	8.250	0.362-0.367	0.137-0.147	0.379	7.488	8.249 +0/-0.007	28.00
PS1800-136	8.500	0.362-0.367	0.137-0.147	0.379	7.738	8.499 +0/-0.007	29.74

STYLE PS1800 GLASS FILLED PTFE PISTON SEALS

<u>Part Number</u>	<u>A Bore Diameter</u> Tol. ±.002	<u>B Seal Height</u>	<u>C Seal Cross Section</u>	<u>D Groove Width</u> Tol. ±.002	<u>E Groove Diameter</u> Tol. ±.004	<u>F Piston Diameter</u>	<u>List Price</u>
PS1800-144	9.000	0.362-0.367	0.195-0.210	0.379	8.122	8.999 +0/-0.008	\$ 35.17
PS1800-152	9.500	0.362-0.367	0.195-0.210	0.379	8.622	9.499 +0/-0.008	40.04
PS1800-160	10.000	0.362-0.367	0.195-0.210	0.379	9.122	9.999 +0/-0.008	39.14
PS1800-168	10.500	0.362-0.367	0.195-0.210	0.379	9.622	10.499 +0/-0.008	83.50
PS1800-176	11.000	0.362-0.367	0.195-0.210	0.379	10.122	10.999 +0/-0.008	89.22
PS1800-192	12.000	0.362-0.367	0.195-0.210	0.379	11.122	11.999 +0/-0.008	92.54
PS1800-208	13.000	0.362-0.367	0.195-0.210	0.379	12.122	12.999 +0/-0.008	83.53
PS1800-224	14.000	0.362-0.367	0.195-0.210	0.379	13.122	13.999 +0/-0.008	100.39

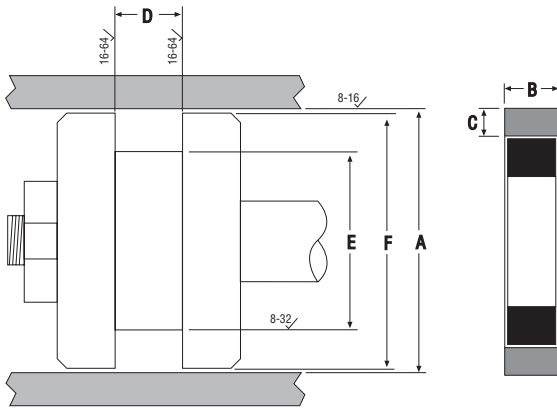
***If you don't see the size you need,
give us a call...***

We are adding new sizes everyday!



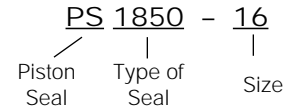
STYLE PS1850 BRONZE FILLED PTFE PISTON SEALS

The PS1850 piston seal can be used interchangeably with the PS1800 style piston seal. This seal provides improved heat resistance for demanding applications. Note: Piston diameter "F" dimensions are given for pistons without wear rings.



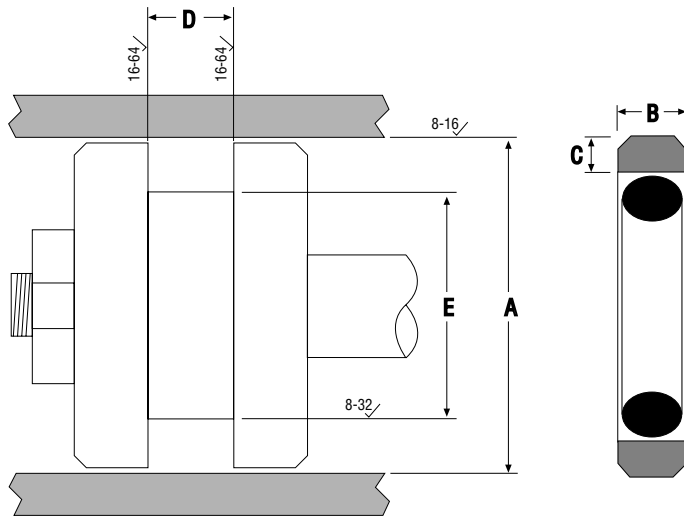
SEAL INFORMATION	
MATERIAL	BRONZE FILLED PTFE SEAL RUBBER ENERGIZER
TEMPERATURE RANGE	-40° TO +220° F
PRESSURE RANGE	0 TO 5,000 PSI

PART NUMBERS



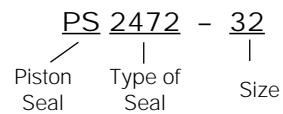
Part Number	A Bore Diameter Tol. ±.002	B Seal Height	C Seal Cross Section	D Groove Width Tol. ±.002	E Groove Diameter Tol. ±.004	F Piston Diameter	List Price
PS1850-16	1.000	0.116-0.121	0.067-0.073	0.129	0.690	0.999 +0/-0.005	\$ 5.31
PS1850-20	1.250	0.116-0.121	0.067-0.073	0.129	0.940	1.249 +0/-0.005	5.15
PS1850-24	1.500	0.116-0.121	0.067-0.073	0.129	1.190	1.499 +0/-0.005	5.39
PS1850-28	1.750	0.116-0.121	0.067-0.073	0.129	1.440	1.749 +0/-0.005	5.80
PS1850-32	2.000	0.116-0.121	0.067-0.073	0.129	1.690	1.999 +0/-0.005	6.67
PS1850-36	2.250	0.116-0.121	0.067-0.073	0.129	1.940	2.249 +0/-0.005	6.83
PS1850-40	2.500	0.116-0.121	0.067-0.073	0.129	2.190	2.499 +0/-0.005	7.29
PS1850-44	2.750	0.116-0.121	0.067-0.073	0.129	2.440	2.749 +0/-0.005	8.09
PS1850-48	3.000	0.269-0.274	0.087-0.093	0.284	2.440	2.999 +0/-0.006	8.66
PS1850-52	3.250	0.269-0.274	0.087-0.093	0.284	2.690	3.249 +0/-0.006	10.29
PS1850-56	3.500	0.269-0.274	0.087-0.093	0.284	2.940	3.499 +0/-0.006	11.34
PS1850-60	3.750	0.269-0.274	0.087-0.093	0.284	3.190	3.749 +0/-0.006	12.88
PS1850-64	4.000	0.269-0.274	0.087-0.093	0.284	3.440	3.999 +0/-0.006	14.31
PS1850-68	4.250	0.269-0.274	0.087-0.093	0.284	3.690	4.249 +0/-0.006	16.54
PS1850-72	4.500	0.269-0.274	0.087-0.093	0.284	3.940	4.499 +0/-0.006	17.36
PS1850-76	4.750	0.269-0.274	0.087-0.093	0.284	4.190	4.749 +0/-0.006	17.89
PS1850-80	5.000	0.269-0.274	0.087-0.093	0.284	4.440	4.999 +0/-0.006	18.74
PS1850-84	5.250	0.362-0.367	0.137-0.147	0.379	4.488	5.249 +0/-0.007	22.08
PS1850-88	5.500	0.362-0.367	0.137-0.147	0.379	4.738	5.499 +0/-0.007	24.68
PS1850-92	5.750	0.362-0.367	0.137-0.147	0.379	4.988	5.749 +0/-0.007	26.65
PS1850-96	6.000	0.362-0.367	0.137-0.147	0.379	5.238	5.999 +0/-0.007	28.63
PS1850-104	6.500	0.362-0.367	0.137-0.147	0.379	5.738	6.499 +0/-0.007	28.89
PS1850-112	7.000	0.362-0.367	0.137-0.147	0.379	6.238	6.999 +0/-0.007	29.41
PS1850-116	7.250	0.362-0.367	0.137-0.147	0.379	6.488	7.249 +0/-0.007	29.46
PS1850-120	7.500	0.362-0.367	0.137-0.147	0.379	6.738	7.499 +0/-0.007	29.51
PS1850-124	7.750	0.362-0.367	0.137-0.147	0.379	6.988	7.749 +0/-0.007	31.85
PS1850-128	8.000	0.362-0.367	0.137-0.147	0.379	7.238	7.999 +0/-0.007	33.67
PS1850-136	8.500	0.362-0.367	0.137-0.147	0.379	7.738	8.499 +0/-0.007	39.54
PS1850-144	9.000	0.362-0.367	0.195-0.210	0.379	8.122	8.999 +0/-0.008	45.46
PS1850-152	9.500	0.362-0.367	0.195-0.210	0.379	8.622	9.499 +0/-0.008	57.42
PS1850-160	10.000	0.362-0.367	0.195-0.210	0.379	9.122	9.999 +0/-0.008	63.16
PS1850-176	11.000	0.362-0.367	0.195-0.210	0.379	10.122	10.999 +0/-0.008	111.53
PS1850-192	12.000	0.362-0.367	0.195-0.210	0.379	11.122	11.999 +0/-0.008	115.68
PS1850-208	13.000	0.362-0.367	0.195-0.210	0.379	12.122	12.999 +0/-0.008	120.00
PS1850-224	14.000	0.362-0.367	0.195-0.210	0.379	13.122	13.999 +0/-0.008	130.01

STYLE PS2470 BRONZE FILLED PTFE PISTON SEALS



SEAL INFORMATION	
MATERIAL	40% BRONZE FILLED PTFE SEAL RUBBER ENERGIZER
TEMPERATURE RANGE	-40° TO +220° F
PRESSURE RANGE	0 TO 5,000 PSI

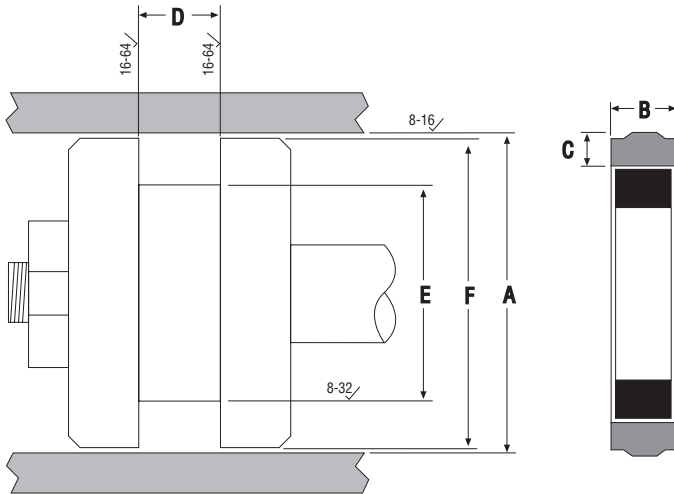
PART NUMBERS



Part Number	A Bore Diameter	B Seal Height	C Seal Cross Section	D Groove Width	E Groove Diameter	List Price
PS2472-32	2.000	0.150	0.100	0.168 ±0.002	1.576 ±0.002	\$ 8.50
PS2472-40	2.500	0.150	0.100	0.168 ±0.002	2.076 ±0.002	9.01
PS2472-44	2.750	0.225	0.140	0.249 ±0.002	2.134 ±0.003	12.34
PS2472-48	3.000	0.150	0.100	0.168 ±0.002	2.576 ±0.002	9.95
PS2473-52	3.250	0.225	0.140	0.249 ±0.002	2.634 ±0.003	15.90
PS2473-56	3.500	0.155	0.100	0.168 ±0.002	2.326 ±0.003	16.37
PS2473-64	4.000	0.225	0.140	0.249 ±0.002	3.384 ±0.003	18.08
PS2473-68	4.250	0.225	0.145	0.249 ±0.002	3.634 ±0.003	17.19
PS2473-72	4.500	0.225	0.140	0.249 ±0.002	3.884 ±0.003	21.05
PS2473-80	5.000	0.225	0.140	0.249 ±0.002	4.384 ±0.003	21.50
PS2474-88	5.500	0.290	0.195	0.322 ±0.002	4.670 ±0.004	28.27
PS2474-96	6.000	0.290	0.195	0.322 ±0.002	5.170 ±0.004	32.37
PS2474-104	6.500	0.290	0.195	0.322 ±0.002	5.670 ±0.004	33.20
PS2474-112	7.000	0.290	0.195	0.322 ±0.002	6.170 ±0.004	34.68
PS2474-120	7.500	0.290	0.195	0.322 ±0.002	6.670 ±0.004	38.40
PS2474-128	8.000	0.290	0.195	0.322 ±0.002	7.170 ±0.004	39.39
PS2474-152	9.500	0.290	0.195	0.322 ±0.002	8.670 ±0.004	47.60
PS2474-160	10.000	0.290	0.195	0.322 ±0.002	9.170 ±0.004	66.19

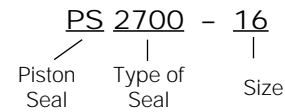
STYLE PS2700 POLYURETHANE PISTON SEALS

This seal, molded from high grade polyesters with 5% glass fiber and 5% PTFE, is totally interchangeable with the Style PS1800 seals. This seal material, with a high degree of "memory", stretches over the piston and snaps in the groove for immediate assembly. These seals also feature low friction and high abrasion and extrusion resistance which helps to eliminate assembly damage. Piston diameter "F" dimensions are given for pistons without wear rings.



SEAL INFORMATION	
MATERIAL	GLASS/PTFE FILLED POLYESTER SEAL RUBBER ENERGIZER
TEMPERATURE RANGE	-40° TO +220° F
PRESSURE RANGE	0 TO 5,000 PSI

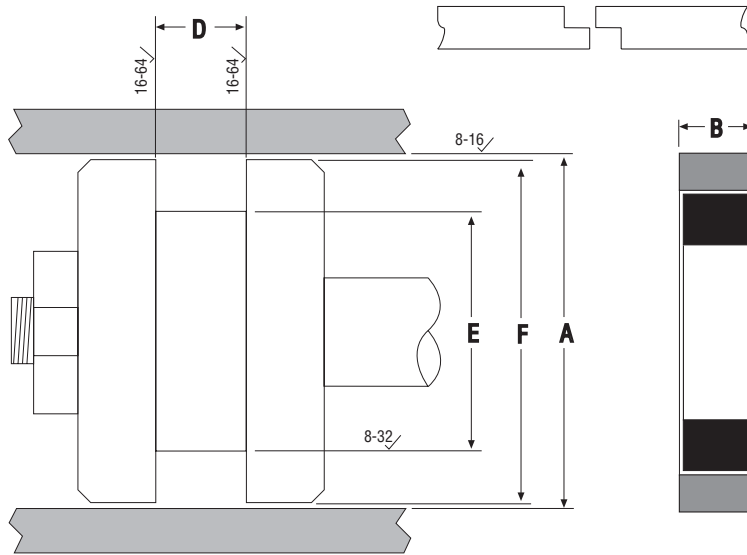
PART NUMBERS



Part Number	A Bore Diameter Tol. ±.002	B Seal Height	C Seal Cross Section	D Groove Width Tol. ±.002	E Groove Diameter Tol. ±.004	F Piston Diameter	List Price
PS2700-16	1.000	0.116-0.121	0.067-0.073	0.129	0.690	0.999 +0/-0.009	\$ 3.40
PS2700-20	1.250	0.116-0.121	0.067-0.073	0.129	0.940	1.249 +0/-0.009	3.40
PS2700-24	1.500	0.116-0.121	0.067-0.073	0.129	1.190	1.499 +0/-0.009	3.54
PS2700-28	1.750	0.116-0.121	0.067-0.073	0.129	1.440	1.749 +0/-0.009	3.54
PS2700-32	2.000	0.116-0.121	0.067-0.073	0.129	1.690	1.999 +0/-0.009	3.82
PS2700-36	2.250	0.116-0.121	0.067-0.073	0.129	1.940	2.249 +0/-0.009	4.03
PS2700-40	2.500	0.116-0.121	0.067-0.073	0.129	2.190	2.499 +0/-0.009	4.21
PS2700-44	2.750	0.116-0.121	0.067-0.073	0.129	2.440	2.749 +0/-0.009	4.32
PS2700-48	3.000	0.269-0.274	0.087-0.093	0.284	2.440	2.999 +0/-0.014	5.31
PS2700-52	3.250	0.269-0.274	0.087-0.093	0.284	2.690	3.249 +0/-0.014	6.32
PS2700-56	3.500	0.269-0.274	0.087-0.093	0.284	2.940	3.499 +0/-0.014	6.40
PS2700-60	3.750	0.269-0.274	0.087-0.093	0.284	3.190	3.749 +0/-0.014	6.50
PS2700-64	4.000	0.269-0.274	0.087-0.093	0.284	3.440	3.999 +0/-0.014	6.65
PS2700-68	4.250	0.269-0.274	0.087-0.093	0.284	3.690	4.249 +0/-0.014	6.69
PS2700-72	4.500	0.269-0.274	0.087-0.093	0.284	3.940	4.499 +0/-0.014	6.91
PS2700-76	4.750	0.269-0.274	0.087-0.093	0.284	4.190	4.749 +0/-0.014	7.15
PS2700-80	5.000	0.269-0.274	0.087-0.093	0.284	4.440	4.999 +0/-0.014	8.22
PS2700-84	5.250	0.362-0.367	0.137-0.147	0.379	4.488	5.249 +0/-0.014	11.47
PS2700-88	5.500	0.362-0.367	0.137-0.147	0.379	4.738	5.499 +0/-0.014	11.55
PS2700-96	6.000	0.362-0.367	0.137-0.147	0.379	5.238	5.999 +0/-0.014	12.08
PS2700-104	6.500	0.362-0.367	0.137-0.147	0.379	5.738	6.499 +0/-0.014	12.45
PS2700-112	7.000	0.362-0.367	0.137-0.147	0.379	6.238	6.999 +0/-0.014	12.65
PS2700-128	8.000	0.362-0.367	0.137-0.147	0.379	7.238	7.999 +0/-0.014	13.30
PS2700-136	8.500	0.362-0.367	0.137-0.147	0.379	7.738	8.499 +0/-0.014	15.15
PS2700-144	9.000	0.362-0.367	0.195-0.210	0.379	8.122	8.999 +0/-0.014	31.00
PS2700-160	10.000	0.362-0.367	0.195-0.210	0.379	9.122	9.999 +0/-0.014	36.62

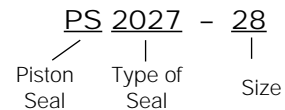
STYLE PS2000 NYLON STEP CUT PISTON SEALS

NOTE: Some PS2000 Piston Seals utilize a round instead of a square energizer. Also, piston diameter "F" dimensions are given for pistons without wear rings.



SEAL INFORMATION	
MATERIAL	GLASS FILLED NYLON SEAL RUBBER ENERGIZER
TEMPERATURE RANGE	-40° TO +220° F
PRESSURE RANGE	0 TO 5,000 PSI

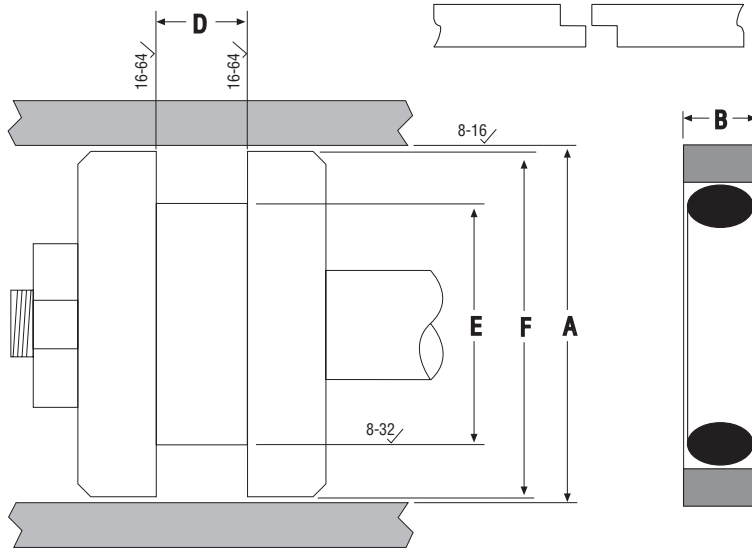
PART NUMBERS



Part Number	A Bore Diameter Tol. +.005/-0	B Seal Height	D Groove Width Tol. +.005/-0	E Groove Diameter Tol. +0/-0.005	F Piston Diameter	List Price
PS2027-28	1.750	0.274	0.282	1.155	1.749 +0/-0.005	\$ 7.42
PS2027-32	2.000	0.274	0.282	1.462	1.999 +0/-0.005	11.47
PS2027-36	2.250	0.274	0.282	1.712	2.249 +0/-0.005	12.21
PS2027-40	2.500	0.274	0.282	1.962	2.499 +0/-0.005	13.76
PS2027-48.04	3.040	0.274	0.282	2.462	3.039 +0/-0.006	13.44
PS2031-48	3.000	0.305	0.312	2.408	2.999 +0/-0.006	14.52
PS2027-52	3.250	0.274	0.282	2.712	3.249 +0/-0.006	14.84
PS2027-56.04	3.540	0.274	0.282	2.962	3.539 +0/-0.006	14.39
PS2031-56	3.500	0.305	0.312	2.908	3.499 +0/-0.006	15.90
PS2037-56	3.500	0.368	0.375	2.740	3.499 +0/-0.006	15.90
PS2027-64.04	4.040	0.274	0.282	3.462	4.039 +0/-0.006	15.45
PS2031-64	4.000	0.305	0.312	3.408	3.999 +0/-0.006	16.84
PS2027-72.04	4.540	0.274	0.282	3.962	4.539 +0/-0.006	16.41
PS2031-72	4.500	0.305	0.312	3.908	4.499 +0/-0.006	20.99
PS2031-80	5.000	0.305	0.312	4.408	4.999 +0/-0.006	22.26
PS2037-80	5.000	0.368	0.375	4.240	4.999 +0/-0.006	22.26
PS2031-88	5.500	0.305	0.312	4.908	5.499 +0/-0.007	24.19
PS2037-88	5.500	0.368	0.375	4.740	5.499 +0/-0.006	24.19
PS2037-96.04	6.040	0.368	0.375	5.240	6.039 +0/-0.007	20.61
PS2037-100	6.250	0.368	0.375	5.490	6.249 +0/-0.007	85.72
PS2037-104	6.500	0.368	0.375	5.740	6.499 +0/-0.007	38.92
PS2037-112	7.000	0.368	0.375	6.240	6.999 +0/-0.007	50.94
PS2037-120	7.500	0.368	0.375	6.740	7.499 +0/-0.007	62.60

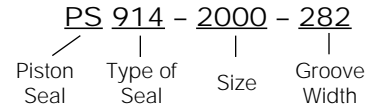
STYLE PS914 NYLON STEP CUT PISTON SEALS

NOTE: Piston diameter "F" dimensions are given for pistons without wear rings.



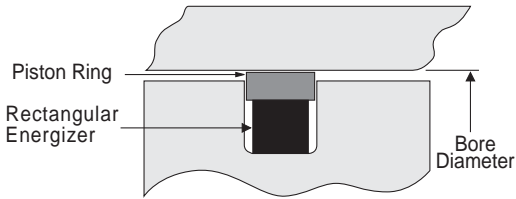
SEAL INFORMATION	
MATERIAL	GLASS FILLED NYLON SEAL RUBBER ENERGIZER
TEMPERATURE RANGE	-40° TO +250° F
PRESSURE RANGE	0 TO 6,000 PSI

PART NUMBERS



Part Number	A Bore Diameter Tol. +0.005/-0	B Seal Height	D Groove Width Tol. +0.005/-0	E Groove Diameter Tol. +0/-0.005	F Piston Diameter	List Price
PS914-2000-282	2.000	0.274	0.282	1.462	1.999 +0/-0.005	\$ 30.94
PS914-2500-282	2.500	0.274	0.282	1.962	2.499 +0/-0.005	32.40
PS914-2500-312	2.500	0.306	0.312	1.908	2.499 +0/-0.005	37.56
PS914-3000-282	3.000	0.274	0.282	2.442	2.999 +0/-0.006	38.91
PS914-3000-312	3.000	0.306	0.312	2.408	2.999++0/-0.006	38.00
PS914-3500-282	3.500	0.274	0.282	2.942	3.499 +0/-0.006	44.99
PS914-3500-312	3.500	0.306	0.312	2.908	3.499 +0/-0.006	46.20
PS914-4000-282	4.000	0.274	0.282	3.442	3.999 +0/-0.006	45.96
PS914-4000-312	4.000	0.306	0.312	3.408	3.999 +0/-0.006	48.34
PS914-4265-282	4.265	0.274	0.282	3.707	4.264 +0/-0.006	40.23
PS914-4500-282	4.500	0.274	0.282	3.942	4.499 +0/-0.006	52.14
PS914-4500-312	4.500	0.306	0.312	3.908	4.499 +0/-0.006	51.60
PS914-5000-282	5.000	0.274	0.282	4.442	4.999 +0/-0.006	50.92
PS914-5000-375	5.000	0.370	0.377	4.240	4.999 +0/-0.006	60.72
PS914-5500-375	5.500	0.370	0.377	4.740	5.499 +0/-0.007	60.72
PS914-6000-375	6.000	0.370	0.377	5.240	5.999 +0/-0.007	64.40
PS914-6500-375	6.500	0.370	0.377	5.740	6.499 +0/-0.007	64.90
PS914-7000-375	7.000	0.370	0.377	6.240	6.999 +0/-0.007	65.20
PS914-7500-375	7.500	0.370	0.377	6.740	7.499 +0/-0.007	66.50
PS914-8000-375	8.000	0.370	0.377	7.240	7.999 +0/-0.007	67.20
PS914-8500-375	8.500	0.370	0.377	7.740	8.499 +0/-0.007	68.00
PS914-9000-375	9.000	0.370	0.377	8.124	8.999 +0/-0.007	119.88
PS914-9500-375	9.500	0.370	0.377	8.624	9.499 +0/-0.008	130.58
PS914-10000-375	10.000	0.370	0.377	9.124	9.999 +0/-0.008	150.00

CATERPILLAR® 2 PIECE PISTON SEALS



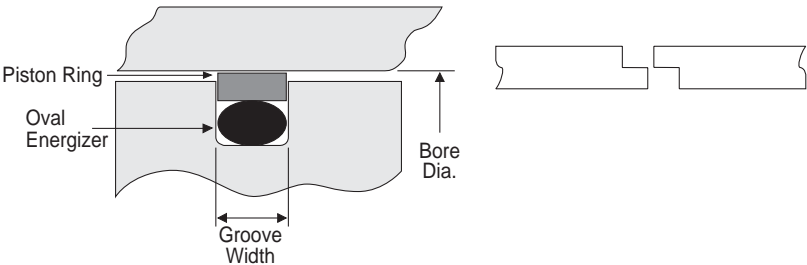
SEAL INFORMATION	
MATERIAL	GLASS FILLED PTFE SEAL RUBBER ENERGIZER
TEMPERATURE RANGE	-40° TO +220° F
PRESSURE RANGE	0 TO 5,000 PSI

Part Number	Bore Diameter	List Price
CTC-5J4986A.....	4-1/2	\$ 13.64
CTC-5J4987A.....	4-3/4	14.89
CTC-5J4988A.....	5-1/2	21.04
CTC-5J4989A.....	6	22.37
CTC-5J4990A.....	6-1/4	23.85
CTC-5J4991A.....	6-1/2	25.07
CTC-5J4997A.....	7	25.76
CTC-5J4993A.....	7-1/4	26.71

Part Number	Bore Diameter	List Price
CTC-5J5020A.....	5	\$ 16.56
CTC-5J5402A.....	4	10.90
CTC-5J5559A.....	8-1/4	32.55
CTC-5J7004A.....	2	5.65
CTC-5J7010A.....	2-3/4	10.55
CTC-5J7013A.....	3-1/2	8.15
CTC-5J7019A.....	9-1/4	44.00
CTC-5J7234A.....	5-1/4	19.20

Part Number	Bore Diameter	List Price
CTC-5J7854A.....	4-1/4	\$ 12.25
CTC-5J8011A.....	3-3/4	17.56
CTC-6J0793A.....	3-1/4	12.06
CTC-6J1972A.....	3	6.95
CTC-6J9385A.....	8-1/2	38.63
CTC-8J6213A.....	2-1/2	15.39

CATERPILLAR® 2 PIECE STEP-CUT PISTON SEALS



SEAL INFORMATION	
MATERIAL	DELTRIN SEAL RUBBER ENERGIZER
TEMPERATURE RANGE	-40° TO +220° F
PRESSURE RANGE	0 TO 5,000 PSI

Part Number	Bore Diameter	Groove Width	List Price
CTC-4T4144	6	0.629	\$ 27.96
CTC-4T5173	5-1/2	0.629	25.24
CTC-4T8054	3-1/2	0.192	23.29
CTC-4T8695	6-1/2	0.629	29.20
CTC-6E0465	5-1/2	0.379	41.20
CTC-8C9160	4	0.252	27.05
CTC-8T0763	5-1/4	0.379	26.89

Part Number	Bore Diameter	Groove Width	List Price
CTC-8T1789	7	0.629	\$ 24.13
CTC-8T1792	7-3/4	0.629	28.71
CTC-8T1793	8-1/4	0.629	43.42
CTC-8T1794	10	0.690	70.44
CTC-8T1796	10-1/2	0.690	73.51
CTC-8T1797	11-12	0.690	92.67
CTC-9T0119	8-1/2	0.629	44.00

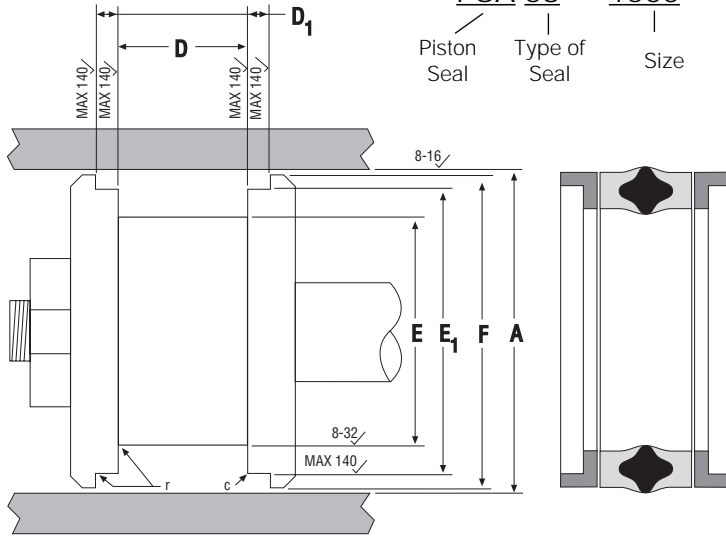
NOTE: Caterpillar® part numbers are used as a reference only. We do not imply that these parts are original equipment parts.

STYLE PSA-58 PISTON SEALS

Style PSA-58 piston seals combine a heavy duty, fabric reinforced seal with two polyacetal "L" bearings. This construction allows the seal to withstand pressures up to 10,000 PSI. "L" bearings also react to pressure to prevent extrusion and support the piston. For 2-piece pistons.

PART NUMBERS

PSA 58 - 1500
 Piston Seal | Type of Seal | Size



SEAL INFORMATION

MATERIAL	FABRIC REINFORCED NITRILE SEAL POLYACETAL ANTI-EXTRUSION RING
TEMPERATURE RANGE	-22° TO +212° F
PRESSURE RANGE	0 TO 10,000 PSI
MAXIMUM SPEED	1.5 Ft/Sec. to 6000 PSI 0.5 Ft/Sec. to 10,000 PSI

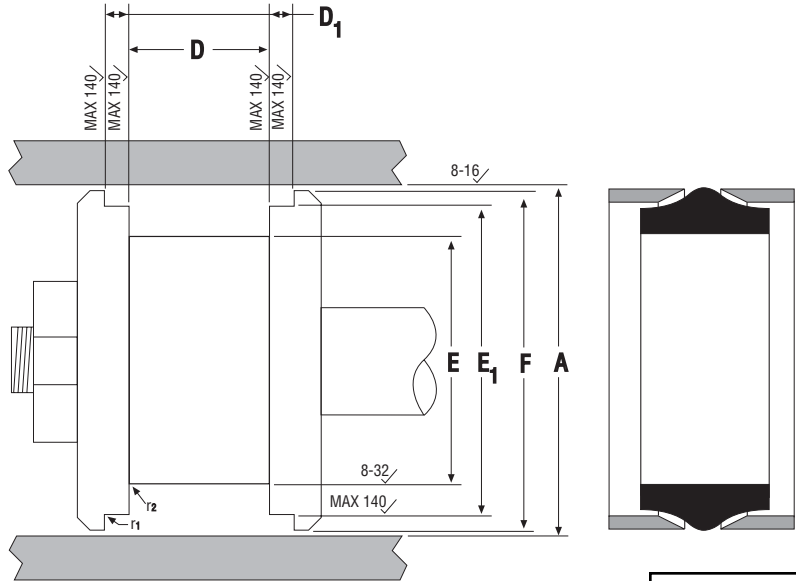
CHAMFER INFORMATION

BORE DIAMETER	MIN CHAMFER "c"	MAX RADIUS "r"
1.5 - 2.5	0.032X45°	0.008
2.75 - 4.0	0.062X45°	0.008
4.5 - 10.0	0.062X45°	0.016

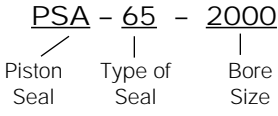
Part Number	A Bore Diameter	D Seal Groove Width Tol. +0.035/+0.025	D1 Bearing Groove Width Tol. +0/-0.005	E Seal Groove Diameter	E1 Bearing Groove Diameter	F Piston Diameter	List Price
PSA-58-1500	1.500 +0.006/-0	0.750	0.250	1.000 ±0.003	1.371 +0/-0.002	1.468 ±0.003	\$ 17.32
PSA-58-1750	1.750 +0.006/-0	0.937	0.250	1.125 ±0.003	1.555 +0/-0.002	1.687 ±0.003	20.12
PSA-58-2000	2.000 +0.007/-0	0.937	0.250	1.375 ±0.003	1.805 +0/-0.002	1.937 ±0.004	21.00
PSA-58-2000A	2.000 +0.007/-0	0.750	0.254	1.375 ±0.003	1.822 +0/-0.002	1.962 ±0.004	21.00
PSA-58-2250	2.250 +0.007/-0	0.937	0.250	1.625 ±0.003	2.055 +0/-0.003	2.187 ±0.004	23.32
PSA-58-2500	2.500 +0.007/-0	0.937	0.250	1.875 ±0.003	2.305 +0/-0.003	2.437 ±0.004	26.12
PSA-58-2500A	2.500 +0.007/-0	0.750	0.254	1.875 ±0.003	2.321 +0/-0.003	2.437 ±0.004	26.12
PSA-58-2750	2.750 +0.007/-0	1.187	0.250	2.000 ±0.004	2.485 +0/-0.003	2.687 ±0.004	30.38
PSA-58-3000	3.000 +0.007/-0	1.187	0.250	2.250 ±0.004	2.735 +0/-0.003	2.937 ±0.004	32.00
PSA-58-3250	3.250 +0.009/-0	1.187	0.250	2.500 ±0.004	2.985 +0/-0.003	3.187 ±0.004	33.32
PSA-58-3500	3.500 +0.009/-0	1.187	0.250	2.750 ±0.004	3.235 +0/-0.003	3.437 ±0.004	35.44
PSA-58-3750	3.750 +0.009/-0	1.187	0.250	3.000 ±0.004	3.485 +0/-0.003	3.687 ±0.004	37.00
PSA-58-4000	4.000 +0.009/-0	1.187	0.250	3.250 ±0.004	3.735 +0/-0.003	3.937 ±0.004	41.38
PSA-58-4500	4.500 +0.009/-0	1.500	0.375	3.500 ±0.004	4.234 +0/-0.003	4.437 ±0.005	49.56
PSA-58-4750	4.750 +0.010/-0	1.500	0.375	3.750 ±0.004	4.485 +0/-0.003	4.687 ±0.005	50.68
PSA-58-4750A	4.750 +0.010/-0	1.250	0.254	3.750 ±0.004	4.483 +0/-0.003	4.700 ±0.005	50.68
PSA-58-5000	5.000 +0.010/-0	1.500	0.375	4.000 ±0.004	4.735 +0/-0.004	4.937 ±0.005	56.88
PSA-58-5500	5.500 +0.010/-0	1.500	0.375	4.500 ±0.004	5.236 +0/-0.004	5.437 ±0.005	60.62
PSA-58-5750	5.750 +0.010/-0	1.500	0.375	4.750 ±0.005	5.484 +0/-0.004	5.687 ±0.005	110.95
PSA-58-6000	6.000 +0.010/-0	1.500	0.375	5.000 ±0.005	5.736 +0/-0.004	5.937 ±0.005	64.56
PSA-58-6000A	6.000 +0.010/-0	1.250	0.254	5.000 ±0.005	5.728 +0/-0.004	5.954 ±0.005	64.56
PSA-58-6500	6.500 +0.010/-0	1.500	0.375	5.500 ±0.005	6.236 +0/-0.004	6.437 ±0.005	96.22
PSA-58-7000	7.000 +0.010/-0	1.500	0.375	6.000 ±0.005	6.736 +0/-0.004	6.937 ±0.005	102.06
PSA-58-8000	8.000 +0.011/-0	1.250	0.375	7.000 ±0.005	7.740 +0/-0.005	7.937 ±0.006	128.73
PSA-58-10000	10.000 +0.013/-0	1.250	0.375	9.000 ±0.006	9.740 +0/-0.005	9.937 ±0.006	256.02

STYLE PSA-65 PISTON SEALS

Compact and easy to install, the Style PSA-65 piston seal is a simple and economical design for pressures up to 3,000 PSI. The assembly consists of a nitrile rubber seal and two polyacetal bearings to support the piston. For 1 Piece Pistons.



PART NUMBERS



GROOVE INFORMATION		
BORE DIAMETER	MAX RADIUS	
	"r1"	"r2"
2.0 - 3.0	0.008	0.016
3.5 - 4.5	0.008	0.016
5.0 - 5.5	0.016	0.032
6.0 - 7.0	0.016	0.032

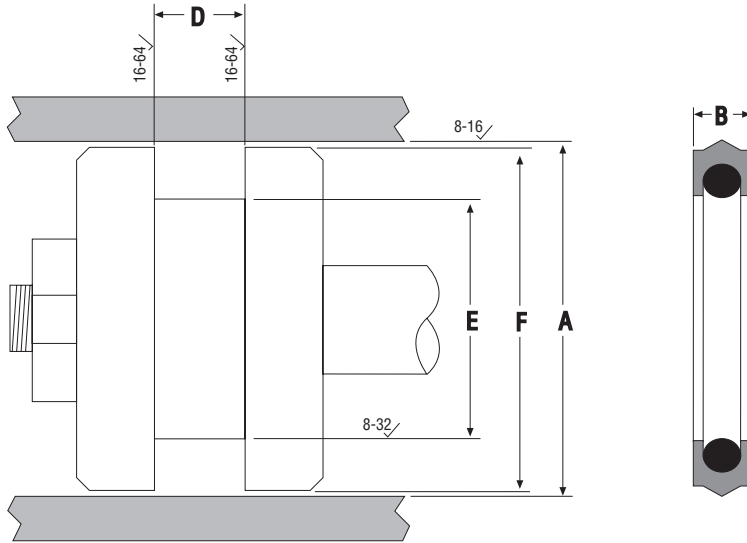
SEAL INFORMATION	
MATERIAL	NITRILE SEAL POLYACETAL ANTI-EXTRUSION RING
TEMPERATURE RANGE	-22° TO +212° F
PRESSURE RANGE	0 TO 3000 PSI
MAXIMUM SPEED	1.5 Ft/Sec. to 2100 PSI 0.5 Ft/Sec. to 3000 PSI

Part Number	A Bore Diameter	D Seal Groove Width Tol. +0.015/+0.005	D1 Bearing Groove Width Tol. +0/-0.005	E Seal Groove Diameter	E1 Bearing Groove Diameter	F Piston Diameter	List Price
PSA-65-2000	2.000 +0.005/-0	0.437	0.150	1.625 +0/-0.002	1.824 +0/-0.002	1.937 +0/-0.006	\$ 17.33
PSA-65-2500	2.500 +0.005/-0	0.437	0.150	2.125 +0/-0.003	2.325 +0/-0.003	2.437 +0/-0.007	20.63
PSA-65-3000	3.000 +0.005/-0	0.437	0.150	2.625 +0/-0.003	2.825 +0/-0.003	2.937 +0/-0.007	26.07
PSA-65-3500	3.500 +0.006/-0	0.562	0.210	3.000 +0/-0.003	3.270 +0/-0.003	3.437 +0/-0.009	30.09
PSA-65-4000	4.000 +0.006/-0	0.562	0.210	3.500 +0/-0.003	3.770 +0/-0.003	3.937 +0/-0.009	33.60
PSA-65-4500	4.500 +0.006/-0	0.562	0.210	4.000 +0/-0.003	4.270 +0/-0.003	4.437 +0/-0.009	40.95
PSA-65-5000	5.000 +0.006/-0	0.687	0.344	4.375 +0/-0.003	4.689 +0/-0.003	4.937 +0/-0.010	43.46
PSA-65-5500	5.500 +0.006/-0	0.687	0.344	4.875 +0/-0.004	5.188 +0/-0.004	5.437 +0/-0.010	46.90
PSA-65-6000	6.000 +0.006/-0	1.000	0.500	5.250 +0/-0.004	5.712 +0/-0.004	5.937 +0/-0.010	49.41
PSA-65-7000	7.000 +0.006/-0	1.000	0.500	6.250 +0/-0.004	6.712 +0/-0.004	6.937 +0/-0.010	60.44

STYLE PSC PISTON SEALS

The style "PSC" is a double-acting piston seal designed to replace O-rings, quad-rings, and T-seals with the same groove dimensions (O-ring dash number). Style 575 urethane back-up rings may be added to either or both sides of the "PSC" to accommodate wider groove widths. The "PSC" is made of 95A Durometer polyurethane, giving it high extrusion and abrasion resistance. The crowned sealing surface produces a positive seal from vacuum to high pressure.

Tech Seal also offers a wide base (WB) style "PSC" piston seal. These wide base seals have the same characteristics of the standard PSC seals but offer a wider base, eliminating the need to use back-up rings to accommodate wider grooves. **NOTE:** Piston diameter "F" dimensions are given for pistons without wear rings.



PART NUMBERS

PSC - 218 - WB
 | | |
 Type of O-Ring Wide
 Seal Size Base

SEAL INFORMATION	
MATERIAL	95A POLYURETHANE SEAL 70A NITRILE ENERGIZER
TEMPERATURE RANGE	-65° TO +220° F
PRESSURE RANGE	0 TO 5,000 PSI

Part Number	A Bore Diameter	B Seal Height	D Groove Width	E Groove Diameter	F Piston Diameter	List Price
PSC-212	1.125 +0.002/-0	0.150	0.185 +0.010/-0	0.879 +0/-0.002	1.123 +0/-0.002	\$ 3.30
PSC-216	1.375 +0.002/-0	0.150	0.185 +0.010/-0	1.129 +0/-0.002	1.373 +0/-0.002	3.30
PSC-218	1.500 +0.002/-0	0.150	0.185 +0.010/-0	1.254 +0/-0.002	1.498 +0/-0.002	3.30
PSC-218-WB	1.500 +0.002/-0	0.265	0.304 +0.010/-0	1.254 +0/-0.002	1.498 +0/-0.002	5.17
PSC-222	1.750 +0.002/-0	0.150	0.185 +0.010/-0	1.504 +0/-0.002	1.748 +0/-0.002	3.74
PSC-222-WB	1.750 +0.002/-0	0.265	0.304 +0.010/-0	1.504 +0/-0.002	1.748 +0/-0.002	5.96
PSC-325	1.875 +0.002/-0	0.255	0.280 +0.010/-0	1.500 +0/-0.002	1.873 +0/-0.002	3.98
PSC-326	2.000 +0.002/-0	0.255	0.280 +0.010/-0	1.625 +0/-0.002	1.998 +0/-0.002	4.14
PSC-326-WB	2.000 +0.002/-0	0.370	0.424 +0.010/-0	1.625 +0/-0.002	1.998 +0/-0.002	6.78
PSC-328	2.250 +0.002/-0	0.255	0.280 +0.010/-0	1.875 +0/-0.002	2.248 +0/-0.002	4.76
PSC-329	2.375 +0.002/-0	0.255	0.280 +0.010/-0	2.000 +0/-0.002	2.373 +0/-0.002	5.10
PSC-330	2.500 +0.002/-0	0.255	0.280 +0.010/-0	2.125 +0/-0.002	2.498 +0/-0.002	5.40
PSC-330-WB	2.500 +0.002/-0	0.370	0.424 +0.010/-0	2.125 +0/-0.002	2.498 +0/-0.002	8.54
PSC-332	2.750 +0.004/-0	0.255	0.280 +0.010/-0	2.374 +0/-0.004	2.747 +0/-0.004	6.36
PSC-334	3.000 +0.004/-0	0.255	0.280 +0.010/-0	2.624 +0/-0.004	2.997 +0/-0.004	6.67
PSC-334-WB	3.000 +0.004/-0	0.370	0.424 +0.010/-0	2.624 +0/-0.004	2.997 +0/-0.004	10.26
PSC-336	3.250 +0.004/-0	0.255	0.280 +0.010/-0	2.874 +0/-0.004	3.247 +0/-0.004	7.43
PSC-337	3.375 +0.004/-0	0.255	0.280 +0.010/-0	3.000 +0/-0.004	3.373 +0/-0.004	11.94
PSC-338	3.500 +0.004/-0	0.255	0.280 +0.010/-0	3.125 +0/-0.004	3.498 +0/-0.004	8.32
PSC-338-WB	3.500 +0.004/-0	0.370	0.424 +0.010/-0	3.125 +0/-0.004	3.498 +0/-0.004	10.28
PSC-339	3.625 +0.004/-0	0.255	0.280 +0.010/-0	3.250 +0/-0.004	3.623 +0/-0.004	12.84
PSC-340	3.750 +0.004/-0	0.255	0.280 +0.010/-0	3.375 +0/-0.004	3.748 +0/-0.004	9.00
PSC-342	4.000 +0.004/-0	0.255	0.280 +0.010/-0	3.625 +0/-0.004	3.998 +0/-0.004	9.89
PSC-342-WB	4.000 +0.004/-0	0.370	0.424 +0.010/-0	3.625 +0/-0.004	3.998 +0/-0.004	15.24

STYLE PSC PISTON SEALS

PISTON SEALS

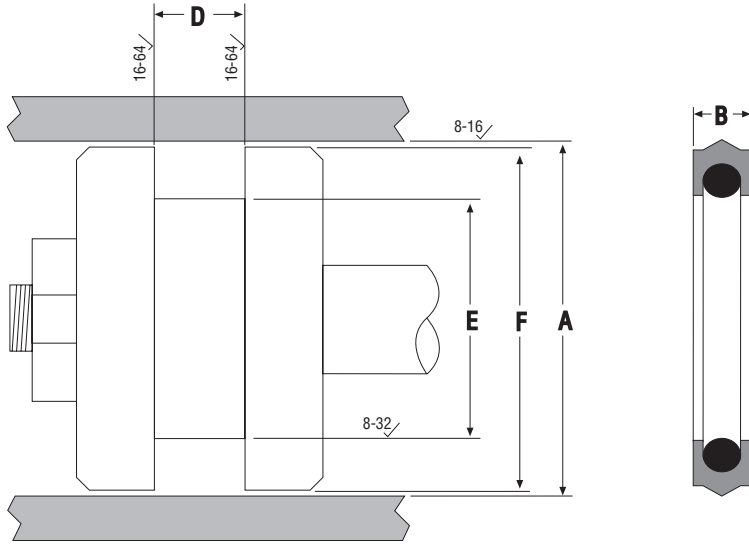
Part Number	A Bore Diameter	B Seal Height	D Groove Width	E Groove Diameter	F Piston Diameter	List Price
PSC-344	4.250 +0.004/-0	0.255	0.280 +0.010/-0	3.875 +0/-0.004	4.248 +0/-0.004	\$ 11.26
PSC-346	4.500 +0.004/-0	0.255	0.280 +0.010/-0	4.125 +0/-0.004	4.498 +0/-0.004	12.60
PSC-347	4.625 +0.004/-0	0.255	0.280 +0.010/-0	4.250 +0/-0.004	4.623 +0/-0.004	13.50
PSC-350	5.000 +0.004/-0	0.255	0.280 +0.010/-0	4.626 +0/-0.004	4.999 +0/-0.004	16.00
PSC-429	5.500 +0.004/-0	0.320	0.365 +0.010/-0	5.021 +0/-0.004	4.499 +0/-0.004	19.40
PSC-433	6.000 +0.004/-0	0.320	0.365 +0.010/-0	5.521 +0/-0.004	5.999 +0/-0.004	24.31
PSC-433-WB	6.000 +0.004/-0	0.500	0.579 +0.010/-0	5.521 +0/-0.004	5.999 +0/-0.004	33.45
PSC-437	6.500 +0.006/-0	0.320	0.365 +0.010/-0	6.020 +0/-0.006	6.498 +0/-0.006	26.35
PSC-439	7.000 +0.006/-0	0.320	0.365 +0.010/-0	6.520 +0/-0.006	6.998 +0/-0.006	27.92
PSC-441	7.500 +0.006/-0	0.320	0.365 +0.010/-0	7.020 +0/-0.006	7.498 +0/-0.006	31.50
PSC-442	7.750 +0.006/-0	0.320	0.365 +0.010/-0	7.270 +0/-0.006	7.748 +0/-0.006	45.16
PSC-443	8.000 +0.006/-0	0.320	0.365 +0.010/-0	7.520 +0/-0.006	7.998 +0/-0.006	32.66
PSC-444	8.250 +0.006/-0	0.320	0.365 +0.010/-0	7.770 +0/-0.006	8.248 +0/-0.006	33.39
PSC-445	8.500 +0.006/-0	0.320	0.365 +0.010/-0	8.020 +0/-0.006	8.498 +0/-0.006	35.12
PSC-446	9.000 +0.006/-0	0.320	0.365 +0.010/-0	8.520 +0/-0.006	8.998 +0/-0.006	35.20
PSC-447	9.500 +0.006/-0	0.320	0.365 +0.010/-0	9.020 +0/-0.006	9.498 +0/-0.006	36.00
PSC-448	10.000 +0.006/-0	0.320	0.365 +0.010/-0	9.520 +0/-0.006	9.998 +0/-0.006	35.17
PSC-449	10.500 +0.006/-0	0.320	0.365 +0.010/-0	10.020 +0/-0.006	10.498 +0/-0.006	42.00
PSC-450	11.000 +0.006/-0	0.320	0.365 +0.010/-0	10.520 +0/-0.006	10.998 +0/-0.006	43.25
PSC-451	11.500 +0.006/-0	0.320	0.365 +0.010/-0	11.020 +0/-0.006	11.498 +0/-0.006	62.33
PSC-452	12.000 +0.006/-0	0.320	0.365 +0.010/-0	11.520 +0/-0.006	11.998 +0/-0.006	69.78
PSC-453	12.500 +0.006/-0	0.320	0.365 +0.010/-0	12.020 +0/-0.006	12.998 +0/-0.006	75.00
PSC-454	13.000 +0.006/-0	0.320	0.365 +0.010/-0	12.520 +0.006/-0	12.998 +0/-0.006	80.22
PSC-456	14.000 +0.006/-0	0.320	0.365 +0.010/-0	13.520 +0.006/-0	13.998 +0/-0.006	90.68

***If you don't see the size you need,
give us a call...***

We are adding new sizes everyday!

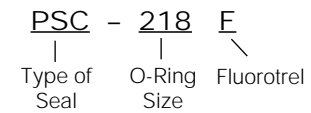
STYLE PSC PISTON SEALS - FLUOROTREL COMPOUND

These Style PSC are molded from Fluorotrel which is a tough, wear-resistant material able to run at temperatures up to 275°F. Fluorotrel is also resistant to fluids that are incompatible with polyurethane such as water, glycol, water in oil, mineral oil and petroleum oil. Consult Tech Seal's Engineering Department for other fluids compatible with Fluorotrel. NOTE: Piston diameter "F" dimensions are given for pistons without wear rings.



SEAL INFORMATION	
MATERIAL	55D FLUOROTREL SEAL 70A NITRILE ENERGIZER
TEMPERATURE RANGE	-65° TO +275° F
PRESSURE RANGE	0 TO 5,000 PSI

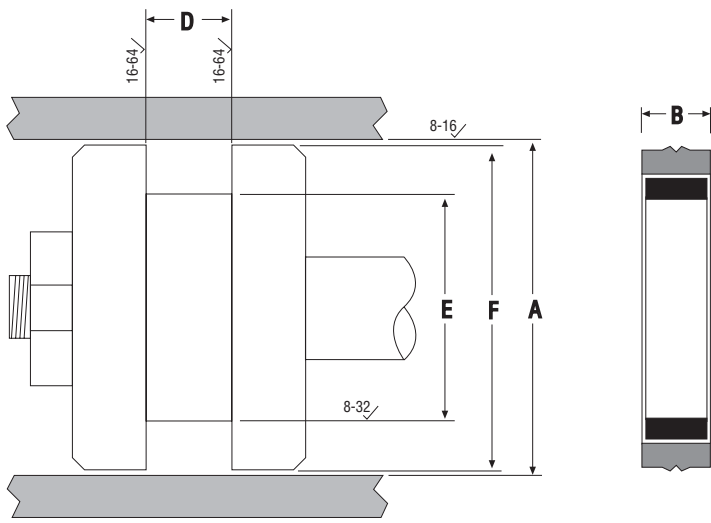
PART NUMBERS



Part Number	A Bore Diameter	B Seal Height	D Groove Width	E Groove Diameter	F Piston Diameter	List Price
PSC-218F	1.500 +.002/-0	0.150	0.185 +.005/-0	1.254 +0/-0.002	1.498 +0/-0.002	\$ 5.22
PSC-222F	1.750 +.002/-0	0.150	0.185 +.005/-0	1.504 +0/-0.002	1.748 +0/-0.002	5.94
PSC-326F	2.000 +.002/-0	0.255	0.280 +.005/-0	1.625 +0/-0.002	1.998 +0/-0.002	6.72
PSC-328F	2.250 +.002/-0	0.255	0.280 +.005/-0	1.875 +0/-0.002	2.248 +0/-0.002	7.84
PSC-330F	2.500 +.002/-0	0.255	0.280 +.005/-0	2.125 +0/-0.002	2.498 +0/-0.002	8.94
PSC-334F	3.000 +.004/-0	0.255	0.280 +.005/-0	2.624 +0/-0.004	2.997 +0/-0.004	10.44
PSC-338F	3.500 +.004/-0	0.255	0.280 +.005/-0	3.125 +0/-0.004	3.498 +0/-0.004	12.34
PSC-340F	3.750 +.004/-0	0.255	0.280 +.005/-0	3.375 +0/-0.004	3.748 +0/-0.004	13.44
PSC-342F	4.000 +.004/-0	0.255	0.280 +.005/-0	3.625 +0/-0.004	3.998 +0/-0.004	14.94
PSC-350F	5.000 +.004/-0	0.255	0.280 +.005/-0	4.625 +0/-0.004	4.999 +0/-0.004	22.40
PSC-433F	6.000 +.004/-0	0.320	0.365 +.006/-0	5.520 +0/-0.004	5.999 +0/-0.004	32.44

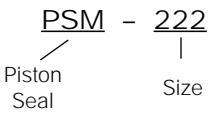
STYLE PSM URETHANE PISTON SEALS

Molded from 93 Shore A polyurethane with a 70 Shore A energizer, this seal utilizes the same groove dimensions as a standard o-ring or T-seal. One or two Style 575 back-up rings may be used for wider grooves. Extrusion resistant by design, this seal also is resistant to rolling and twisting. Installation is an easy two step snap-in procedure with no need to re-size before insertion into the bore. **NOTE:** Piston diameter "F" dimensions are given for pistons without wear rings.



SEAL INFORMATION	
MATERIAL	93A URETHANE SEAL 70A NITRILE ENERGIZER
TEMPERATURE RANGE	-65° TO +220° F
PRESSURE RANGE	0 TO 5,000 PSI

PART NUMBERS

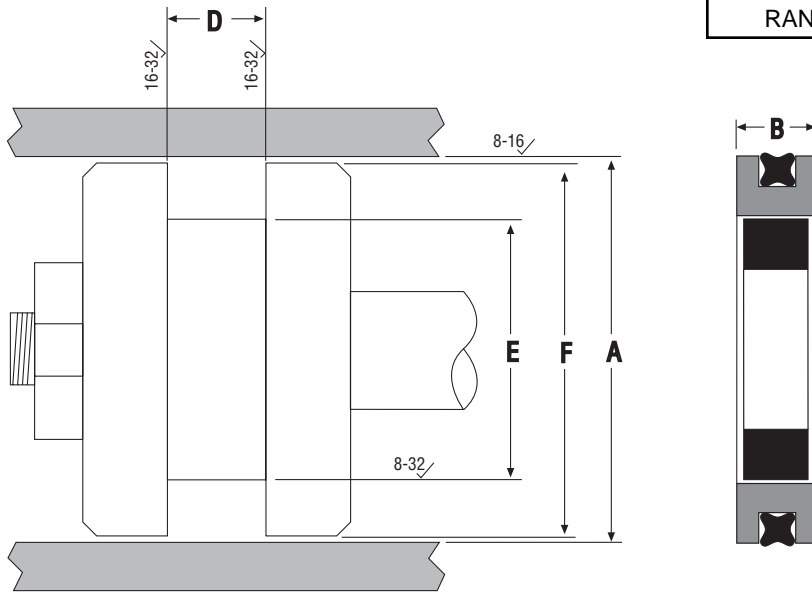


Part Number	A Bore Diameter <small>Tol. ±.001</small>	B Seal Height	D Groove Width <small>Tol. ±.002</small>	E Groove Diameter <small>Tol. ±.002</small>	F Piston Diameter	List Price
PSM-222	1.750	0.165	0.185	1.500	1.749 +0/-0.006	\$ 4.06
PSM-326	2.000	0.265	0.280	1.625	1.999 +0/-0.006	4.56
PSM-328	2.250	0.265	0.280	1.875	2.249 +0/-0.006	5.34
PSM-329	2.375	0.265	0.280	2.000	2.374 +0/-0.006	5.84
PSM-330	2.500	0.265	0.280	2.125	2.499 +0/-0.006	6.12
PSM-332	2.750	0.265	0.280	2.375	2.749 +0/-0.006	6.62
PSM-334	3.000	0.265	0.280	2.625	2.999 +0/-0.006	7.12
PSM-336	3.250	0.265	0.280	2.875	3.249 +0/-0.006	7.90
PSM-338	3.500	0.265	0.280	3.125	3.499 +0/-0.006	8.40
PSM-340	3.750	0.265	0.280	3.375	3.749 +0/-0.006	9.18
PSM-342	4.000	0.265	0.280	3.625	3.999 +0/-0.006	10.20
PSM-344	4.250	0.265	0.280	3.875	4.249 +0/-0.006	11.68
PSM-346	4.500	0.265	0.280	4.125	4.499 +0/-0.006	12.72
PSM-347	4.625	0.265	0.280	4.250	4.624 +0/-0.006	13.22
PSM-350	5.000	0.265	0.280	4.625	4.999 +0/-0.008	15.24
PSM-429	5.500	0.350	0.365	5.020	5.499 +0/-0.008	18.78
PSM-433	6.000	0.350	0.365	5.520	5.999 +0/-0.008	22.10
PSM-437	6.500	0.350	0.365	6.020	6.499 +0/-0.008	24.18
PSM-439	7.000	0.350	0.365	6.520	6.999 +0/-0.008	25.68
PSM-441	7.500	0.350	0.365	7.020	7.499 +0/-0.008	27.44
PSM-443	8.000	0.350	0.365	7.520	7.999 +0/-0.008	28.94
PSM-445	8.500	0.350	0.365	8.020	8.499 +0/-0.008	30.50
PSM-446	9.000	0.350	0.365	8.520	8.999 +0/-0.008	32.00

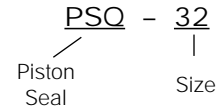
STYLE PSQ BRONZE FILLED PISTON SEALS

These piston seals provide bi-directional, low friction sealing with increased stability and superior leakage control. The square cut energizer provides low pressure sealing and eliminates backside leakage. This seal also effectively seals between different fluids on each side of the piston seal, making gas/liquid sealing combinations possible. NOTE: Piston diameter "F" dimensions are given for pistons without wear rings.

SEAL INFORMATION	
MATERIAL	40% BRONZE FILLED PTFE SEAL RUBBER ENERGIZER AND QUATTRO RING
TEMPERATURE RANGE	-40° TO +220° F
PRESSURE RANGE	0 TO 5,000 PSI



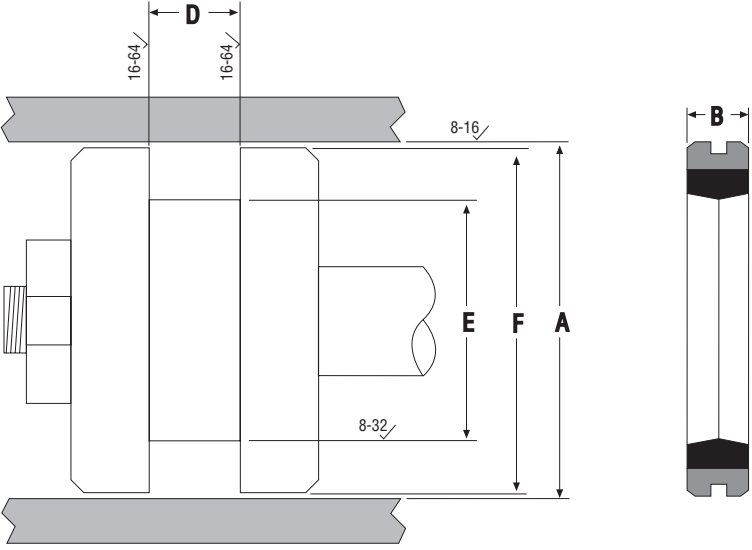
PART NUMBERS



Part Number	A Bore Diameter	B Seal Height	D Groove Width	E Groove Diameter	F Piston Diameter	List Price
PSQ-24	1.500 +0.004/-0	0.271	0.288/0.293	.884 +0/0.006	1.499 +0/-0.008	\$ 22.29
PSQ-32	2.000 +0.004/-0	0.271	0.288/0.293	1.384 +0/-0.006	1.999 +0/-0.008	29.00
PSQ-40	2.500 +0.004/-0	0.271	0.288/0.293	1.884 +0/-0.006	2.499 +0/-0.008	31.61
PSQ-48	3.000 +0.004/-0	0.271	0.288/0.293	2.384 +0/-0.006	2.999 +0/-0.008	34.11
PSQ-52	3.250 +0.004/-0	0.271	0.288/0.293	2.634 +0/-0.006	3.249 +0/-0.008	36.06
PSQ-56	3.500 +0.004/-0	0.271	0.288/0.293	2.884 +0/-0.006	3.499 +0/-0.008	36.78
PSQ-64	4.000 +0.004/-0	0.271	0.288/0.293	3.384 +0/-0.006	3.999 +0/-0.008	36.91
PSQ-72	4.500 +0.004/-0	0.271	0.288/0.293	3.884 +0/-0.006	4.499 +0/-0.008	41.94
PSQ-80	5.000 +0.004/-0	0.271	0.288/0.293	4.384 +0/-0.006	4.999 +0/-0.008	45.44
PSQ-88	5.500 +0.005/-0	0.352	0.375/0.380	4.660 +0/-0.007	5.499 +0/-0.009	55.33
PSQ-96	6.000 +0.005/-0	0.352	0.375/0.380	5.160 +0/-0.007	5.999 +0/-0.009	59.56
PSQ-104	6.500 +0.005/-0	0.352	0.375/0.380	5.660 +0/-0.007	6.499 +0/-0.009	72.40
PSQ-112	7.000 +0.005/-0	0.352	0.375/0.380	6.170 +0/-0.009	6.999 +0/-0.009	64.20
PSQ-128	8.000 +0.005/-0	0.352	0.375/0.380	7.170 +0/-0.009	7.999 +0/-0.009	70.44

STYLE PSU PISTON SEALS

Our Style "PSU" Piston Seal or Uniring is a laminated one piece double acting seal made of cast polyurethane. The tough outer layer is highly resistant to abrasion and is impregnated with molybdenum disulfide to reduce friction. The softer inner layer acts as a static seal and also energizes the O.D. to make full contact with the bore. This seal may be used to replace an existing Uniring or other seals of the same dimensions - O-Rings, O-Rings with back-ups, T-Seals, U-Seals, etc. NOTE: Piston diameter "F" dimensions are given for pistons without wear rings.



SEAL INFORMATION	
MATERIAL	60D & 57A URETHANE COMPOSITE
TEMPERATURE RANGE	-65° TO +220° F
PRESSURE RANGE	0 TO 5,000 PSI

PART NUMBERS
 PSU - 1.50 X 1.00 X .375
 Type of Seal Outside Diameter Inside Diameter Groove Width

Part Number	A Bore Diameter	B Seal Height	D Groove Width Tol. +0.015/-0	E Groove Diameter	F Piston Diameter Tol. +0/0.004	List Price
PSU-1.50X1.00X.375	1.500 +0.006/-0	0.375	0.394	1.000 +0.006/-0	1.499	\$ 5.62
PSU-1.50X1.12X.250	1.500 +0.004/-0	0.250	0.263	1.125 +0.004/-0	1.499	4.22
PSU-1.50X1.25X.187	1.500 +0.003/-0	0.187	0.196	1.250 +0.003/-0	1.499	3.14
PSU-1.75X1.25X.375	1.750 +0.006/-0	0.375	0.394	1.250 +0.006/-0	1.749	5.88
PSU-1.75X1.37X.250	1.750 +0.004/-0	0.250	0.263	1.375 +0.004/-0	1.749	4.32
PSU-1.75X1.37X.500	1.750 +0.004/-0	0.500	0.526	1.375 +0.004/-0	1.749	7.62
PSU-2.00X1.50X.375	2.000 +0.006/-0	0.375	0.394	1.500 +0.006/-0	1.999	6.90
PSU-2.00X1.62X.312	2.000 +0.004/-0	0.312	0.328	1.625 +0.004/-0	1.999	5.44
PSU-2.00X1.62X.375	2.000 +0.004/-0	0.375	0.394	1.625 +0.004/-0	1.999	6.26
PSU-2.25X1.87X.312	2.250 +0.004/-0	0.312	0.328	1.875 +0.004/-0	2.249	6.76
PSU-2.50X2.00X.375	2.500 +0.004/-0	0.375	0.394	2.000 +0.004/-0	2.499	6.76
PSU-2.50X2.12X.312	2.500 +0.004/-0	0.312	0.328	2.125 +0.004/-0	2.499	6.00
PSU-2.50X2.12X.375	2.500 +0.004/-0	0.375	0.394	2.125 +0.004/-0	2.499	6.70
PSU-3.00X2.50X.375	3.000 +0.006/-0	0.375	0.394	2.500 +0.006/-0	2.999	7.18
PSU-3.00X2.50X.500	3.000 +0.006/-0	0.500	0.550	2.500 +0.004/-0	2.999	14.62
PSU-3.00X2.62X.312	3.000 +0.004/-0	0.312	0.328	2.625 +0.004/-0	2.999	7.18
PSU-3.00X2.62X.375	3.000 +0.004/-0	0.375	0.394	2.625 +0.004/-0	2.999	7.18
PSU-3.25X2.75X.550	3.250 +0.004/-0	0.550	0.577	2.750 +0.004/-0	3.249	11.56
PSU-3.25X2.87X.312	3.250 +0.004/-0	0.312	0.328	2.875 +0.004/-0	3.249	7.34
PSU-3.50X3.00X.375	3.500 +0.006/-0	0.375	0.394	3.000 +0.006/-0	3.499	8.06
PSU-3.50X3.12X.312	3.500 +0.004/-0	0.312	0.328	3.125 +0.004/-0	3.499	7.56
PSU-3.50X3.12X.375	3.500 +0.004/-0	0.375	0.394	3.125 +0.004/-0	3.499	7.68
PSU-3.75X3.37X.312	3.750 +0.004/-0	0.312	0.328	3.375 +0.004/-0	3.749	7.84
PSU-4.00X3.50X.375	4.000 +0.006/-0	0.375	0.394	3.500 +0.006/-0	3.999	11.88
PSU-4.00X3.62X.375	4.000 +0.004/-0	0.375	0.394	3.625 +0.004/-0	3.999	8.18
PSU-4.50X4.00X.375	4.500 +0.006/-0	0.375	0.394	4.000 +0.006/-0	4.499	9.88
PSU-4.50X4.00X.562	4.500 +0.006/-0	0.562	0.591	4.000 +0.006/-0	4.499	14.06



STYLE PSU PISTON SEALS

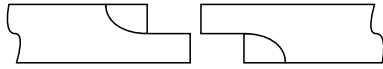
Part Number	A Bore Diameter	B Seal Height	D Groove Width <small>Tol. +0.015/-0</small>	E Groove Diameter	F Piston Diameter <small>Tol. +0/0.004</small>	List Price
PSU-5.00X4.37X.500	5.000 +0.006/-0	0.500	0.526	4.375 +0.006/-0	4.999	\$ 26.25
PSU-5.00X4.50X.375	5.000 +0.006/-0	0.375	0.394	4.500 +0.006/-0	4.999	10.76
PSU-5.00X4.50X.500	5.000 +0.006/-0	0.500	0.526	4.500 +0.006/-0	4.999	17.74
PSU-5.00X4.50X.562	5.000 +0.006/-0	0.562	0.591	4.500 +0.006/-0	4.999	17.74
PSU-5.25X4.75X.562	5.250 +0.006/-0	0.562	0.591	4.750 +0.006/-0	5.249	17.90
PSU-5.50X5.00X.375	5.500 +0.006/-0	0.375	0.394	5.000 +0.006/-0	5.499	22.56
PSU-6.00X5.50X.375	6.000 +0.006/-0	0.375	0.394	5.500 +0.006/-0	5.999	24.50
PSU-6.00X5.50X.562	6.000 +0.006/-0	0.562	0.591	5.500 +0.006/-0	5.999	24.50
PSU-6.50X6.00X.562	6.500 +0.006/-0	0.562	0.591	6.000 +0.006/-0	6.499	24.76

***If you don't see the size you need,
give us a call...***

We are adding new sizes everyday!

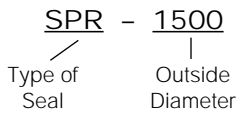


STYLE SPR CAST IRON PISTON RINGS



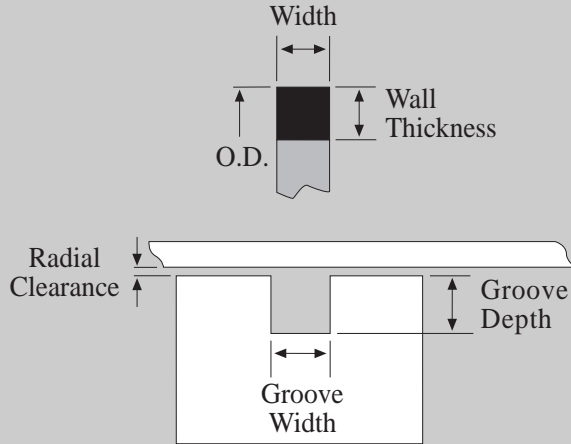
BC = Butt Cut
H = Hook Joint

PART NUMBERS



SEAL INFORMATION	
MATERIAL	CAST IRON

A WORD ABOUT CAST IRON PISTON RING GROOVE DIMENSIONS



END CLEARANCE
End clearance on piston rings depends on ring design, material and application. The following end clearances are provided as a standard for hydraulic cylinder applications.

DIAMETER	BUTT & ANGLE CUT END CLEARANCE	OVERLAPPING JOINT & STEP CUT END CLEARANCE
.500-4.561	.003/.010	.005/.015
4.562-19.970	.005/.015	.010/.020
19.971-30.500	.010/.025	.015/.030

When using cast iron piston rings, it is crucial to use the correct groove design for proper performance of the cylinder. Please use the following guidelines when cutting a cast iron piston ring groove.

GROOVE WIDTH: To permit the ring to slide freely into the groove, the groove must be at least 0.001" wider than the maximum piston ring width with a tolerance of +0.003"/-0.000".

GROOVE DEPTH: Grooves must be at least 0.015" deeper than the maximum radial wall thickness of the piston ring with a tolerance of +0.003"/-0.000". This is to avoid any possibility of the ring bottoming in the groove when the ring is compressed to its working diameter.

RADIAL CLEARANCE: The radial clearance between the cylinder bore and piston should be less than 1/3 of the radial wall thickness of the piston ring to ensure sealing effectiveness.

<u>SPR</u> Part Number	<u>O.D.</u>	<u>Width</u>	<u>Wall</u> <u>Thickness</u>	<u>List</u> <u>Price</u>
-1000	1.000	.123/.124	.045/.055	\$ 8.06
-1001	1.000	.093/.094	.045/.055	12.11
-1375-H	1-3/8	0.0975/0.0965	0.06/0.05	21.25
-1500	1.500	.124	.055/.060	4.86
-1501	1.500	.092/.093	.060/.075	15.72
-1530	1.530	.123	.070	6.22
-1750	1.750	.123/.124	.060/.075	6.86
-1751	1.750	.092/.093	.060/.075	6.86
-2000	2.000	.124	.060/.075	7.33
-2001	2.000	.186/.187	.065/.075	7.10
-2002	2.000	.248	.065	8.88
-2003	2.000	.092/.093	.082/.097	8.56
-2030	2.030	.125	.080	8.56
-2125	2.125	.186/.187	.060/.075	8.39
-2126	2.125	.123/.124	.060/.070	8.64

<u>SPR</u> Part Number	<u>O.D.</u>	<u>Width</u>	<u>Wall</u> <u>Thickness</u>	<u>List</u> <u>Price</u>
-2250	2.250	.186/.187	.070/.085	\$ 8.64
-2251	2.250	.123/.124	.077/.085	8.38
-2254	2.250	.248	.085	9.28
-2376	2.375	.185/.186	.076/.091	9.28
-2500	2.500	.1235/.1245	.082/.097	6.89
-2501	2.500	.186/.187	.082/.097	6.89
-2502	2.500	.248/.249	.103/.118	7.16
-2503	2.500	.123/.124	.103/.118	9.66
-2530	2.530	.124	.107	7.16
-2625	2.625	.185/.186	.087/.102	8.50
-2750	2.750	.186/.187	.091/.106	8.56
-2752	2.750	.155/.156	.100/.125	7.26
-2754	2.750	.186/.187	.103/.118	12.11
-2755	2.755	.119	.124	9.76
-2875	2.875	.186/.187	.100/.105	7.26

STYLE SPR CAST IRON PISTON RINGS

SPR Part Number	O.D.	Width	Wall Thickness	List Price
-3000	3.000	186/.187	100/.125	\$ 7.17
-3001	3.000	248/.249	103/.118	7.44
-3003	3.000	310/.311	.095/.110	7.48
-3120	3.125	1855/.1865	100/.115	8.83
-3250	3.250	186/.187	103/.118	7.17
-3251	3.250	123/.124	103/.118	7.17
-3252	3.250	248	112	7.26
-3253	3.250	154/.155	121/.134	7.55
-3260	3.260	248/.249	115/.130	8.89
-3280	3.280	187	111	7.55
-3375	3.375	185/.186	106/.121	11.82
-3497	3.497	186/.187	109/.124	7.55
-3500	3.500	123/.124	109/.124	7.55
-3502	3.500	248/.249	109/.124	7.55
-3503	3.500	374	113	11.94
-3505	3.500	186/.187	109/.124	7.55
-3520-BC	3.520	185	130	8.13
-3626	3.625	248/.249	170/.185	15.00
-3750	3.750	186/.187	115/.130	7.76
-3751	3.750	248/.249	109/.124	7.76
-3752	3-3/4	1850/.1865	190/.175	50.00
-3875	3.875	249/.250	132/.137	7.84
-3990	3.990	248/.249	127/.142	7.84
-4000	4.000	248/.249	127/.142	7.84
-4002	4.000	186/.187	127/.142	7.56
-4003	4.000	310/.311	135/.145	7.84
-4007	4	1865/.1855	199/.184	50.00
-4020	4.020	310/.311	127/.142	9.88
-4030	4.030	248	143	7.84
-4250	4.250	248/.249	135/.150	8.28
-4251	4-1/4	249/.248	181/.166	51.60
-4260	4.260	248/.249	152/.167	8.28
-4496	4.496	248/.249	140/.160	8.46
-4500	4.500	310/.311	145/.160	8.44
-4501	4.500	187	160	8.28
-4502	4.500	248/.249	145/.160	8.56
-4503	4.500	373	155	14.12
-4504	4-1/2	249/.248	199/.184	51.60
-4520-BC	4.520	185	165	8.29
-4540	4.540	184/.187	155/.170	8.44
-4751	4.750	248/.249	152/.167	8.46
-4876-BC	4.875	372/.373	109/.124	24.83
-5000	5.000	248/.249	140/.150	8.72
-5001	5.000	186/.187	160/.175	8.72
-5002	5.000	248/.249	165/.180	8.72
-5003	5.000	372/.373	155/.165	11.56
-5004	5.000	310/.311	165/.180	13.44
-5005	5.000	125	170	11.38
-5030	5.030	248	187	10.06
-5120	5.125	248/.249	166/.172	12.60
-5121	5.125	248/.249	155	18.06

SPR Part Number	O.D.	Width	Wall Thickness	List Price
-5251	5.250	248/.249	166/.181	\$ 13.56
-5260	5.260	248/.249	180/.195	10.90
-5496	5.496	248/.249	140/.160	11.62
-5500	5.500	310/.311	175/.190	11.78
-5501	5.500	186/.187	168/.187	11.78
-5502	5.500	248/.249	175/.190	11.78
-5503	5.500	372/.373	165/.177	15.62
-5520-BC	5.520	185	186	11.71
-5540	5.540	184/.186	180/.210	11.66
-5750	5.750	187	187	14.96
-5751	5.750	248/.249	184/.199	15.85
-5752	5.750	310/.311	175/.195	17.12
-6000	6.000	248/.249	140/.160	11.91
-6001	6.000	1225/.1240	191/.206	16.00
-6002	6.000	248/.249	191/.206	11.90
-6004	6.000	310/.311	191/.206	11.90
-6005	6.000	373	195	14.00
-6006	6.000	184/.185	195/.205	14.94
-6030	6.030	248	205	14.94
-6040	6.040	185/.186	190/.205	17.19
-6120	6.125	248/.249	190/.205	18.35
-6250	6.250	187	210	18.66
-6251	6.250	310/.311	205/.220	18.66
-6252	6.250	248/.249	202/.217	21.00
-6260	6.260	248/.249	191/.206	12.86
-6496	6.496	248/.249	140/.160	13.96
-6500	6.500	310/.311	210/.225	13.62
-6501	6.501	185	215	22.09
-6502	6.500	248/.249	210/.225	13.62
-6503	6.500	186/.187	211/.226	26.00
-6505	6.500	497/.499	210/.225	40.44
-6520-BC	6.520	185	225	12.00
-6540	6.540	248/.249	230/.240	17.22
-6750	6.750	248/.249	175/.190	16.50
-6751	6.750	311	219/.234	19.31
-6752	6.750	248/.249	219/.234	20.17
-7000	7.000	248/.249	140/.160	14.83
-7002	7.000	248/.249	228/.243	14.83
-7003	7.000	371/.373	228/.243	20.28
-7005	7.000	311/.312	228/.243	20.28
-7006	7.000	497/.498	228/.243	32.00
-7030	7.030	315	245	20.28
-7250	7.250	248/.249	160/.175	22.56
-7255	7.250	310/.311	230/.240	22.56
-7260	7.260	248/.249	253/.268	18.00
-7375	7.375	373	200	29.56
-7496	7.496	248/.249	140/.160	20.00
-7500	7.500	310/.311	210/.225	27.50
-7501	7.500	248	265	19.06
-7505	7.500	311/.312	244/.259	22.28
-7520-BC	7.520	185	260	16.21

STYLE SPR CAST IRON PISTON RINGS

PISTON RINGS

SPR Part Number	O.D.	Width	Wall Thickness	List Price
-7750	7.750	310/311	.252/.267	\$ 27.50
-8000	8.000	310/311	.210/.225	21.22
-8001	8.000	434/435	.255/.270	37.49
-8005	8.000	310/311	.260/.275	22.56
-8006	8.000	373/374	.260/.275	22.56
-8030	8.030	315	.285	23.88
-8125	8.125	434/435	.255/.270	40.51
-8250	8.250	373/374	.268/.283	31.11
-8370	8.375	248	.280	32.88
-8420	8.420	248/249	.291/.306	25.00
-8496	8.496	248/249	.140/.160	28.00
-8500	8.500	310/311	.210/.225	30.66
-8502	8.500	373/374	.270/.285	37.00
-8503	8.500	310/311	.294/.309	30.66
-8520-BC	8.520	185	.272	18.20
-8751	8.750	374/376	.300/.305	36.00
-9000	9.000	373/374	.294/.309	36.50
-9001	9.000	310/311	.294/.309	39.00
-9004	9.000	435	.248/.250	52.85
-9005	9.000	500	.188	64.31

SPR Part Number	O.D.	Width	Wall Thickness	List Price
-9170	9.170	310/311	.305/.320	\$ 42.22
-9250	9.250	248/249	.160/.175	42.56
-9251	9.250	310	.310	42.22
-9500	9.500	310/311	.305/.320	44.00
-9501	9.500	248/249	.317/.318	38.50
-9502	9.500	371/373	.305/.320	44.00
-9746	9.746	248/249	.140/.160	44.48
-9885	9.885	248/249	.325/.340	34.61
-10000	10.000	310/311	.320/.330	46.27
-10001	10.000	371/373	.317/.332	52.47
-10030	10.030	310/311	.335/.345	57.00
-10501	10.500	372	.317	67.72
-10502	10.500	.623/.624	.235/.248	87.48
-11000	11.000	.474	.312	84.78
-12001	12.000	434/435	.358/.373	118.66
-12030	12.030	371/373	.386/.401	97.30