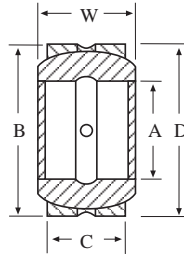


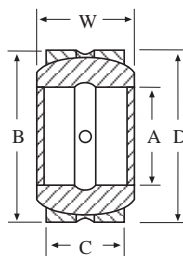
SELF ALIGNING BEARINGS

MISCELLANEOUS



Part Number	A	B	W	C	D	List Price
GEZ10ES.....	5/8.....	1.062.....	.547.....	.469.....	.899.....	\$ 16.50
GEZ12ES.....	3/4.....	1.25.....	.656.....	.562.....	1.080.....	17.20
GEZ100ES.....	1.....	1.625.....	.875.....	.750.....	1.437.....	22.26
GEZ104ES.....	1-1/4.....	2.000.....	1.093.....	.937.....	1.795.....	28.00
GEZ108ES.....	1-1/2.....	2.437.....	1.312.....	1.125.....	2.155.....	35.56
GEZ112ES.....	1-3/4.....	2.812.....	1.531.....	1.312.....	2.515.....	48.52
GEZ200ES.....	2.....	3.187.....	1.750.....	1.500.....	2.875.....	57.75
GEZ204ES.....	2-1/4.....	3.562.....	1.969.....	1.687.....	3.250.....	80.00
GEZ208ES.....	2-1/2.....	3.937.....	2.187.....	1.875.....	3.590.....	112.00
GEZ212ES.....	2-3/4.....	4.375.....	2.406.....	2.062.....	3.950.....	166.66
GEZ300ES.....	3.....	4.750.....	2.625.....	2.250.....	4.312.....	178.76
GEZ308ES.....	3-1/2.....	5.500.....	3.062.....	2.625.....	5.040.....	322.96

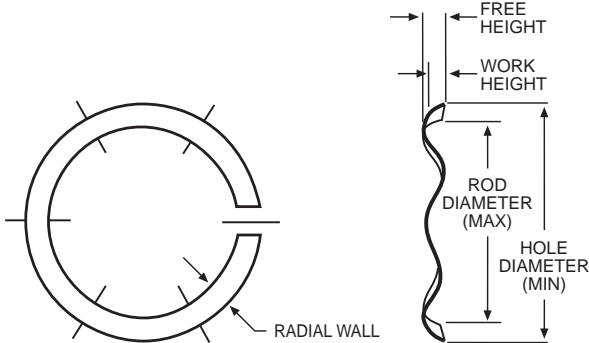
SELF ALIGNING BEARINGS



Part Number	A	B	W	C	D	List Price
HH008ES	1/2	.875	.437	.375	.551	\$ 15.00
HH012ES	3/4	1.250	.656	.562	.844	15.50
HH014ES	7/8	1.438	.765	.656	.974	14.00
HH100ES	1	1.625	.875	.750	1.103	13.50
HH104ES	1-1/4	2.000	1.093	.937	1.382	19.50
HH106ES	1-3/8	2.187	1.187	1.031	1.516	29.50
HH108ES	1-1/2	2.438	1.312	1.125	1.703	25.50
HH108ES 2RS	1-1/2	2.438	1.312	1.125	1.703	34.00
HH112ES	1-3/4	2.812	1.531	1.312	1.984	35.00
HH112ES 2RS	1-3/4	2.812	1.531	1.312	1.984	44.00
HH200ES	2	3.187	1.750	1.500	2.266	47.50
HH200ES 2RS	2	3.187	1.750	1.500	2.266	57.00
HH204ES	2-1/4	3.562	1.969	1.687	2.554	65.00
HH204ES 2RS	2-1/4	3.562	1.969	1.687	2.554	85.00
HH208ES	2-1/2	3.937	2.187	1.875	2.833	88.00
HH208ES 2RS	2-1/2	3.937	2.187	1.875	2.833	110.00
HH212ES	2-3/4	4.375	2.406	2.062	3.110	103.33
HH212ES 2RS	2-3/4	4.375	2.406	2.062	3.110	128.00
HH300ES	3	4.750	2.625	2.250	3.406	155.00
HH300ES 2RS	3	4.750	2.625	2.250	3.406	177.00
HH304ES	3-1/4	5.125	2.844	2.437	3.703	197.00
HH308ES	3-1/2	5.500	3.062	2.625	4.000	275.00
HH308ES 2RS	3-1/2	5.500	3.062	2.625	4.000	305.00
HH312ES	3-3/4	5.875	3.281	2.812	4.266	297.00
HH400ES	4	6.250	3.500	3.000	4.559	401.00
HH400ES 2RS	4	6.250	3.500	3.000	4.559	445.00
HH408ES	4-1/2	7.000	3.937	3.375	5.110	525.00
HH500ES	5	7.750	4.375	3.750	5.703	670.00
HH600ES	6	8.750	4.750	4.125	6.594	1100.00

WAVE SPRINGS

Wave Springs offer a convenient method of exerting a pre-load on vee packing where little or no adjustment is available. Because of a low fatigue factor, the spring should provide a proper pre-load through the life of the packing.



Part Number	Hole Diameter (Min.)	Rod Diameter (Max.)	Free Height	Work Height	Radial Wall	List Price
SSR-0125	1.250	.960	.150	.078	.133	\$ 3.01
SSR-0150	1.500	1.170	.170	.078	.143	3.20
SSR-0175	1.750	1.440	.140	.078	.143	3.20
SSR-0187	1.875	1.560	.150	.078	.143	3.20
SSR-0200	2.000	1.680	.140	.093	.150	3.48
SSR-0225	2.250	1.930	.170	.093	.150	3.68
SSR-0237	2.375	1.990	.160	.093	.178	3.79
SSR-0250	2.500	2.120	.170	.093	.178	4.00
SSR-0262	2.625	2.240	.190	.093	.178	4.00
SSR-0275	2.750	2.340	.170	.109	.188	4.39
SSR-0300	3.000	2.590	.190	.109	.188	4.71
SSR-0325	3.250	2.750	.200	.109	.233	5.05
SSR-0350	3.500	3.000	.230	.109	.233	5.38
SSR-0362	3.625	3.12w5	.230	.109	.233	5.80
SSR-0375	3.750	3.250	.260	.109	.233	5.92
SSR-0425	4.250	3.740	.210	.109	.233	18.66
SSR-0462	4.625	4.125	.230	.109	.233	7.28
SSR-0512	5.125	4.610	.340	.125	.233	26.13

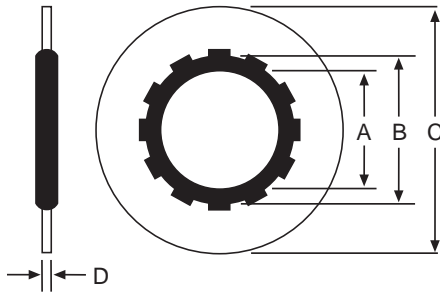
CARBON STEEL SHIMS

These carbon steel shims are commonly used with vee packing sets to fill the empty space in a gland.



Part Number	O.D.	Thickness	Cross Section	List Price
SSRS-0150	1.500	.024	.150	\$ 1.25
SSRS-0200	2.000	.024	.150	1.75

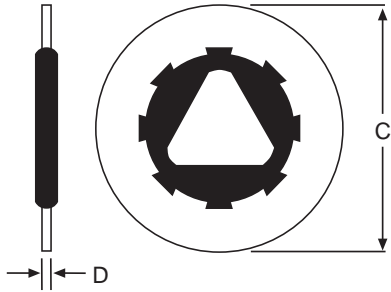
STYLE 110 FACE-SEAL



Part Number	Max. Screw Size	A Rubber I.D.	B Steel I.D.	C Steel O.D.	D Steel Th.	List Price
DY-110 X 8.....	.164	.184	.234	.366	.041	\$.90
DY-110 x 10.....	.177	.197	.247	.438	.050	1.25
DY-110 X 3/16.....	.190	.220	.281	.425	.054	1.45
DY-110 X 7/32.....	.216	.246	.307	.455	.054	1.45
DY-110 X 1/4.....	.250	.280	.341	.519	.054	1.45
DY-110 X 5/16.....	.312	.342	.403	.597	.054	1.45
DY-110 X 3/8.....	.375	.405	.466	.690	.054	1.45
DY-110 X 7/16.....	.437	.467	.538	.769	.075	3.71
DY-110 X 1/2.....	.500	.540	.601	.878	.075	4.12
DY-110 X 9/16.....	.562	.602	.663	.972	.075	4.12
DY-110 X 5/8.....	.625	.665	.726	1.065	.075	5.04

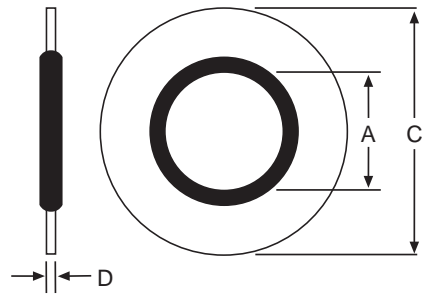
THREAD SEAL

Thread seals provide a positive seal directly against the threads of a bolt. Self-centering and easily installed.



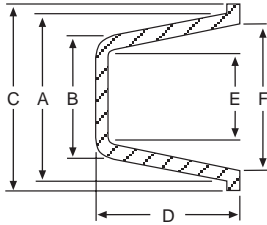
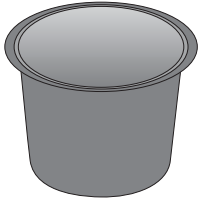
Part Number	C	D	Thread Size	List Price
TS7500X10.....	.469	.051	-10	\$ 1.87
TS7500X1/4.....	.562	.051	1/4	1.87
TS7500X5/16.....	.687	.064	5/16	2.33
TS7500X3/8.....	.750	.064	3/8	2.42
TS7500X7/16.....	.906	.078	7/16	3.40
TS7500X1/2.....	1.000	.078	1/2	3.40

STYLE SB FACE-SEAL



Part Number	A	C	D	List Price
DY-SB-001.....	.115	.250	.048	\$ 1.00
DY-SB-002.....	.157	.286	.048	1.00
DY-SB-003.....	.205	.330	.051	.78
DY-SB-004.....	.270	.520	.051	.78
DY-SB-005.....	.270	.525	.048	1.11
DY-SB-006.....	.322	.525	.048	1.11
DY-SB-007.....	.340	.560	.051	.80
DY-SB-020A.....	.408	.625	.083	.84
DY-SB-008.....	.443	.723	.083	.84
DY-SB-009.....	.460	.750	.083	.86
DY-SB-225.....	.531	.866	.059	.88
DY-SB-021B.....	.541	.810	.083	.86
DY-SB-010.....	.585	.875	.083	.92
DY-SB-022BB.....	.625	.875	.083	.94
DY-SB-011.....	.650	1.000	.083	.96
DY-SB-023C.....	.680	.937	.083	.98
DY-SB-012.....	.715	1.000	.097	.98
DY-SB-024CC.....	.775	1.060	.097	1.08
DY-SB-025D.....	.848	1.125	.097	1.20
DY-SB-026E.....	.925	1.250	.097	1.33
DY-SB-013.....	.955	1.310	.097	2.33
DY-SB-027F.....	1.065	1.375	.097	1.61
DY-SB-240.....	1.083	1.417	.07	1.65
DY-SB-028.....	1.095	1.520	.097	2.10
DY-SB-014.....	1.150	1.440	.092	2.28
DY-SB-015.....	1.280	1.630	.128	2.61
DY-SB-029G.....	1.213	1.500	.097	2.43
DY-SB-030H.....	1.334	1.685	.133	2.45
DY-SB-031.....	1.329	1.685	.092	2.89
DY-SB-016.....	1.410	1.750	.133	5.63
DY-SB-032J.....	1.690	2.062	.133	4.72
DY-SB-033K.....	1.907	2.307	.103	5.45
DY-SB-019.....	2.030	2.500	.128	8.56
DY-SB-034.....	2.161	2.750	.133	9.22
DY-SB-035.....	2.285	2.770	.133	26.66
DY-SB-036.....	2.385	2.875	.133	7.72
DY-SB-038.....	2.625	3.130	.133	12.37
DY-SB-039.....	2.995	3.550	.133	13.86

PLASTIC CAP PLUGS

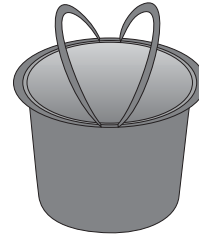


TAPERED CAPS & PLUGS FOR MISC. APPLICATIONS

Part Number	A	B	C	D	E	F	List Price
CAP-00	.180	.115	5/16	13/32	.051	.118	\$.14
CAP-0	.240	.175	3/8	3/8	.109	.175	.22
CAP-1	.302	.240	15/32	3/8	.175	.240	.15
CAP-1-X	.335	.265	15/32	3/8	.240	.275	.15
CAP-2	.365	.300	17/32	3/8	.234	.301	.15
CAP-3	.428	.360	19/32	3/8	.299	.365	.13
CAP-3-X	.460	.390	5/8	3/8	.325	.396	.15
CAP-4-X	.512	.447	5/8	3/8	.385	.448	.03
CAP-5	.547	.490	23/32	1/2	.409	.485	.03
CAP-5-X	.568	.500	3/4	7/16	.435	.503	.04
CAP-6	.620	.531	3/4	1/2	.468	.555	.03
CAP-7	.675	.590	7/8	17/32	.520	.605	.04
CAP-7-X	.695	.610	27/32	1/5	.549	.634	.06
CAP-8	.728	.641	7/8	1/2	.575	.665	.04
CAP-8-X	.754	.675	7/8	5/8	.615	.690	.04
CAP-9-X	.925	.725	1	3/4	.662	.760	.04
CAP-10	.848	.750	1-1/32	5/8	.686	.785	.04
CAP-11	.910	.802	1-3/32	3/4	.740	.846	.10
CAP-11-X	.931	.820	1-1/8	5/8	.754	.868	.04
CAP-13	1.091	.966	1-1/4	3/4	.902	1.025	.06
CAP-13-X	1.145	1.002	1-5/16	3/4	.938	1.079	.06
CAP-14-X	1.285	1.180	1-7/16	3/4	1.105	1.215	.35
CAP-18	1.680	1.560	1-7/8	3/4	1.497	1.620	.09
CAP-21	2.078	1.902	2-1/4	1	1.839	2.015	.16
CAP-220	2.132	1.980	2-1/4	1	1.915	2.068	.16
CAP-230	2.330	2.156	2-5/8	1	2.094	2.264	.20
CAP-240	2.465	2.300	2-5/8	1	2.235	2.400	.20
CAP-250	2.605	2.395	2-5/8	1	2.331	2.541	.22

TAPERED CAP PLUGS FOR NPT STYLE PORTS

Part Number	NPT Port Size	O.D. Size Tapered	Min. HT.	Std. Pkg.	List Price
CAP-2-X	1/8	.330/.396	3/8	50	\$.06
CAP-4	1/4	.419/.485	3/8	50	.06
CAP-6-X	3/8	.550/.631	7/16	50	.08
CAP-9	1/2	.690/.788	9/16	50	.08
CAP-12-X	3/4	.915/1.040	11/16	25	.12
CAP-14	1	1.094/1.215	3/4	25	.12
CAP-15-X	1	1.235/1.350	3/4	25	.14
CAP-17-S	1-1/4	1.513/1.600	1/2	25	.14
CAP-20-S	1-1/2	1.781/1.805	3/8	25	.14
CAP-24-S	2	2.230/2.260	1/2	20	.18



These new style cap plugs are equipped with a handy fold-down pull ring.

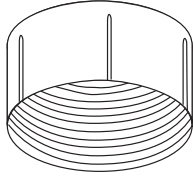
TAPERED CAPS & PLUGS WITH PULL RING

Part Number	NPT Port Size	O.D. Size Tapered	Min. HT.	Std. Pkg.	List Price
CAP-PR-9	1/8	.337/.375	1/4	50	\$.08
CAP-PR-12	1/4	.436/.475	1/4	50	.09
CAP-PR-17	3/8	.552/.615	3/8	50	.10
CAP-PR-22	1/2	.668/.767	1/2	40	.12
CAP-PR-27X	3/4	.878/.977	1/2	40	.14
CAP-PR-32	1	1.113/1.212	1/2	25	.16
CAP-PR-39	1-1/4	1.505/1.580	1/2	25	.20
CAP-PR-43	1-1/2	1.780/1.860	1/2	20	.24
CAP-PR-50	2	2.226/2.258	1/2	20	.28

CAP PLUG APPLICATION CHART

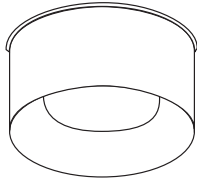
CAP-	NPT CAPS & PLUGS		INCH THREAD CAPS & PLUGS		METRIC THREAD CAPS & PLUGS	
	CAPS	PLUGS	CAPS	PLUGS	CAPS	PLUGS
00				10/32	M2,M2.5	M5
0				1/4	M3,M3.5	M6
1				5/16	M5	M8x1
1-X					M6	
2			15/64	3/8	M7	M10x1.25
2-X		1/8				
3				7/16	M8x1	M12
3-X			3/8			M12x1.25
4	1/8	1/4		1/2	M10x1.25	M14
4-X			7/16			M14x1.5
5			1/2	9/16		
5-X					M12x1.25	M16
6	1/4			5/8		
6-X		3/8	9/16			M18
7			5/8		M14x1.5	M18x1.5
7-X						
8				3/4		M20
8-X	3/8				M16x1.5	M20x1.5
9		1/2				M22
9-X			3/4			M22x1.5
10				7/8	M18x1.5	M24
11	1/2					M24x2
11-X			7/8		M20x1.5	
12		3/4				
12-X				1-1/16	M22x1.5	M27x2
13	3/4				M24x2	
13-X			1-1/16			M30x2
14		1			M27x2	M33
17		1-1/4			M36x3	
17-S				1-5/8		
18	1-1/4		1-5/8	1-3/4	M39x3	
19		1-1/2		1-7/8		
20	1-1/2		1-7/8			
20-S						
21						
220						
230			2-1/4			
24-S		2				
240	2					
250			2-1/2			

PLASTIC CAP PLUGS



FEMALE THREADED CAP PLUGS FOR J.I.C. FITTINGS

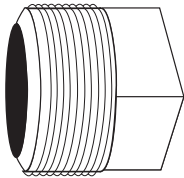
Part Number	Std. Thread	O.D. Size Tube	Dash Size	Min. Pkg.	Std. Pkg.	List Price
CAP-G-2	7/16-20	1/4	#4	20		\$.12
CAP-G-8	9/16-18	3/8	#6	20		.12
CAP-G-14	3/4-16	1/2	#8	20		.14
CAP-G-18	7/8-14	5/8	#10	20		.14
CAP-G-22	1-1/16-12	3/4	#12	20		.18
CAP-G-25	1-3/16-12	7/8	#14	20		.20
CAP-G-27	1-5/16-12	1	#16	20		.20



O-RING FACE FITTING CAPS

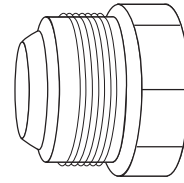
These low density polyethylene caps are designed to fit female o-ring face seal fittings.

Part Number	Thread Size	Min. Pkg.	Std. Pkg.	List Price
CAP-OR-4	9/16-18	35		\$.13
CAP-OR-6	11/16-16	25		.14
CAP-OR-8	13/16-16	25		.16
CAP-OR-10	1-14	25		.19
CAP-OR-12	1-3/16-12	25		.21
CAP-OR-16	1-7/16-12	15		.30
CAP-OR-20	1-11/16-12	10		.78



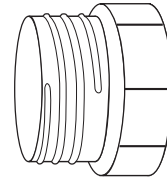
MALE THREADED PIPE PLUGS (SQ. TOP)

Part Number	NPT Port Size	Thread Size	Min. Pkg.	Std. Pkg.	List Price
CAP-P-18	1/8	.0364	25		\$.08
CAP-P-28	1/4	.0477	25		.12
CAP-P-38	3/8	.0612	25		.14
CAP-P-48	1/2	.0758	25		.14
CAP-P-68-H	3/4	.0968	25		.16
CAP-P-88-H	1	1.214	20		.33
CAP-TP-13	1-1/4	1.557	5		1.10
CAP-TP-15	1-1/2	1.796	5		1.10



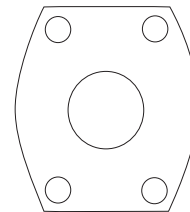
MALE THREADED CAP PLUGS FOR FLARED J.I.C. FITTINGS

Part Number	Std. Thread	O.D. Size Tube	Dash Size	Min. Pkg.	Std. Pkg.	List Price
CAP-PD-40	7/16-20	1/4	#4	25		\$.21
CAP-PD-60	9/16-18	3/8	#6	25		.12
CAP-PD-80	3/4-16	1/2	#8	25		.12
CAP-PD-100	7/8-14	5/8	#10	25		.14
CAP-PD-120	1-1/16-12	3/4	#12	25		.14
CAP-PD-140	1-3/16-12	7/8	#14	20		.22
CAP-PD-160	1-5/16-12	1	#16	20		.22
CAP-PD-200	1-5/8-12	1-1/4	#20	15		.26
CAP-PD-220	1-3/4-12	1-3/8	#22	10		.67
CAP-PD-240	1-7/8-12	1-1/2	#24	10		.60



FLAT FACE FITTING PLUGS

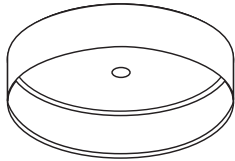
Part Number	Tube Size O.D.	Thread Size	Min. Pkg.	Std. Pkg.	List Price
CAP-PDF-40	1/4	9/16-18	25		\$.14
CAP-PDF-60	3/8	11/16-16	25		.18
CAP-PDF-80	1/2	13/16-16	25		.19
CAP-PDF-100	5/8	1-14	20		.21
CAP-PDF-120	3/4	1-3/16-12	20		.25
CAP-PDF-160	1	1-7/16-12	10		1.13



SPLIT FLANGE PORT CAP PLUGS

Part Number	Port Size	Min. Pkg.	Std. Pkg.	List Price
CAP-8218	1/2	10		\$.72
CAP-8219	3/4	10		.83
CAP-8220	1	10		.89
CAP-8221	1-1/4	10		.94
CAP-8222	1-1/2	10		1.00
CAP-8223	2	10		1.11
CAP-8224	2-1/2	10		1.11

PLASTIC CAP PLUGS



SPLIT FLANGE FACE PLUGS

These low density polyethylene plugs protect the faces of split flange connectors.

Part Number	Cap Size	Flange Size	Min. Pkg.	Std. Pkg.	List Price
CAP-SF-8	1.19	1/2	50		\$.08
CAP-SF-10	1.35	5/8	50		.09
CAP-SF-12	1.50	3/4	50		.10
CAP-SF-16	1.75	1	35		.12
CAP-SF-20	2.00	1-1/4	35		.13
CAP-SF-24	2.38	1-1/2	25		.20
CAP-SF-32	2.81	2	15		.27
CAP-SF-40	3.31	2-1/2	15		.39

CAP PLUG KIT

Part Number: Cap Plug Kit
List Price: \$130.00



This sturdy kit, packaged in an unbreakable box, contains 553 cap plugs in the most popular sizes.

Cap Plug Number	QTY	Cap Plug Number	QTY	Cap Plug Number	QTY
CAP-2-X	50	CAP-PD-100	15	CAP-G-22	10
CAP-4	50	CAP-PD-120	10	CAP-G-25	12
CAP-6-X	50	CAP-PD-140	5	CAP-G-27	16
CAP-9	40	CAP-PD-160	10	CAP-P-28	25
CAP-12-X	25	CAP-G-2	20	CAP-P-38	25
CAP-14	20	CAP-G-8	20	CAP-P-48	25
CAP-PD-60	25	CAP-G-14	20	CAP-P-68-H	25
CAP-PD-80	25	CAP-G-18	20	CAP-P-88-H	10

SET SCREWS

NOTE: These set screws are used on many cylinder headnuts. Use nylon plugs to insure no damage to the headnut threads. All set screws employ allen wrench heads.

Part Number	Thread Size	Length	List Price
SS-1/4-28X1/4	1/4-28	1/4	.62
SS-1/4-20 X 3/8	1/4-20	3/8	.78
SS-5/16-18X1/4	5/16-18	1/4	.62
SS-5/16-24X5/16	5/16-24	5/16	.26
SS-5/16-18X3/8	5/16-18	3/8	.62
SS-5/16-24X3/8	5/16-24	3/8	.85
SS-3/8-16X3/8	3/8-16	3/8	.48
SS-1/2-13X1/2	1/2-13	1/2	1.12
SS-1/2-13X5/8	1/2-13	5/8	1.28
SS-1/2-13X5/8-NL	1/2-13	5/8 (nylon insert)	2.17

NYLON PLUGS

NOTE: These nylon plugs are used with headnut set screws to insure that there is no damage to the headnut threads.

Part Number	Dia.	Length	List Price
NYPLUG-125-156	1/8	5/32	.42
NYPLUG-125-125	1/8	1/8	.42
NYPLUG-187-187	3/16	3/16	.42
NYPLUG-250-125	1/4	1/8	.42
NYPLUG-312-125	5/16	1/8	.42
NYPLUG-250-187	1/4	3/16	.42
NYPLUG-375-250	3/8	1/4	.42
NYPLUG-125-875	1/8	7/8	.29
NYPLUG-187-109	3/16	7/64	.30
NYPLUG-250-250	1/4	1/4	.35
NYPLUG-500-875-125H	1/2	7/8	3.19
NYPLUG-187-250	3/16	1/4	.43

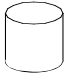
WIND-IN LOCK WIRES

Part Number	Thickness	Length	List Price
LW-093-1262	3/32 sq.	12-5/8	\$ 14.88
Marion-1031	3/16 sq.	.21	8.58
Marion-35240	1/8 sq.	10-1/4	5.36
Marion-35250	1/8 sq.	13-3/8	5.68
Marion-35260	1/8 sq.	16-3/8	6.15
Marion-35270	1/8 sq.	19-1/4	6.26
1/8 RD wire	1/8 round	.11	1.23

MANUAL BLEEDER VALVES

Part Number	Thread Size	List Price
WH705	1/8 NPT	\$ 2.34

NYLON PLUG KIT

 220 Pieces 11 Sizes	NYPLUG-125-125 1/8" X 1/8" 20 pcs.	NYPLUG-187-109 3/16" X 7/64" 20 pcs.	NYPLUG-250-125 1/4" X 1/8" 20 pcs.	
	NYPLUG-125-156 1/8" X 5/32" 20 pcs.	NYPLUG-187-187 3/16" X 3/16" 20 pcs.	NYPLUG-250-187 1/4" X 3/16" 20 pcs.	NYPLUG-312-125 5/16" X 1/8" 20 pcs.
	NYPLUG-125-875 1/8" X 7/8" 20 pcs.	NYPLUG-187-250 3/16" X 1/4" 20 pcs.	NYPLUG-250-250 1/4" X 1/4" 20 pcs.	NYPLUG-375-250 3/8" X 1/4" 20 pcs.

<u>Part Number</u>	<u>List Price</u>
NYLON PLUG KIT	\$ 76.19

FILTER VENT PLUGS




These plugs are used to allow air to pass in and out of the non-pressurized end of a single acting cylinder.

<u>Part Number</u>	<u>NPT Port Size</u>	<u>List Price</u>
FV-.125	1/8"	\$ 3.12
FV-.250	1/4"	4.23
FV-.375	3/8"	5.11
FV-.500	1/2"	6.14
FV-.750	3/4"	9.44
FV-1.000	1"	11.30

WOODRUFF KEY KIT

Part Number: Woodruff Keys Kit
 List Price: \$40.00



 65 Pieces	1/8" X 1/2" No. 3 16 pcs.	1/8" X 5/8" No. 5 15 pcs.
	3/32" X 5/8" No. 6 15 pcs.	3/16" X 3/4" No. 9 10 pcs.
	1/4" X 7/8" No. A 5 pcs.	1/4" X 1" No. 15 4 pcs.

LOCTITE

NOTE: Threadlocker 242 locks fasteners 1/4" and larger yet allows easy disassembly with hand tools. Permanently locks fasteners under 1/4". Prevents rust and corrosion. Tube size: 0.5 ml.

<u>Part Number</u>	<u>List Price</u>
VE-Loctite	\$ 4.07
Loctite-271 Hi-Strength	5.25
Loctite-80725Seals plastic pipes and allows disassembly 2 oz tube	9.35
Loctite-54531Hyd/Pneum thread sealant 50 ml tube.....	70.20
Fast OrangeSmooth formula hand cleaner 1 gal with pump	40.51
Loctite-29021Penetrating Threadlocker 10 ml bottle	25.38
Loctite-24221Removable Threadlocker 10 ml bottle	25.38
Loctite-29031Penetrating Threadlocker .34oz bottle	69.42
Loctite-24231Removable Threadlocker .34oz bottle	69.42
Loctite-76764Anti-Seize Lubricant 1lb brush can	35.98
Loctite-82325Super Lube 3oz tube	9.49

SEAL LUBE™

O-RING LUBRICANT



Part Number: Seal Lube
List Price: \$15.00

Seal-Lube™ lubricant is a thick, clear, high viscosity silicone oil recommended for use with most seal compounds (except silicone) and a wide variety of hydraulic fluids. Insoluble in water, alcohol, petroleum oil, and glycol, Seal-Lube™ can prolong seal life when applied prior to seal installation. Chemically inert and non-toxic, Seal-Lube™ retains its viscosity over a wide temperature range. The handy squeeze bottle dispenses just enough where you want it. 2 Ounce Bottle.

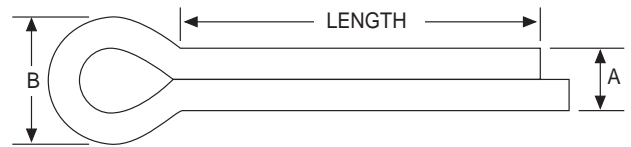
TEFLON TAPE

Part Number: Teflon Tape
List Price: \$1.02



1/2" WIDE BY 520" ROLL

COTTER PINS



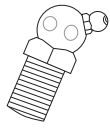
Part Number	Length	A	B	List Price
CP-1 X 3/32	1	.082	3/16	.27
CP-1-1/4 X 1/8	1-1/4	.115	1/4	.20
CP-1-1/2 X 5/32	1-1/2	.150	5/16	.27
CP-1-3/4 X 3/16	1-3/4	.3/16	.390	.16
CP-2 X 1/4	2	.225	1/2	.27
CP-2 X 3/16	2	.176	3/8	.34
CP-2-1/2 X 1/4	2-1/2	.225	1/2	.39
CP-2-1/2 X 1/8	2-1/2	.115	1/4	.20
CP-2-1/2 X 5/32	2-1/2	.5/32	.357	.16
CP-2-1/2 X 3/16	2-1/2	.176	3/8	.34
CP-3 X 1/4	3	.1/4	.520	.93
CP-3-1/2 X 1/4	3-1/2	.225	1/2	.51
CP-4 X 1/4	4	.225	1/2	.59
CP-5 X 1/4	5	.225	1/2	.87
CP-6 X 5/16	6	.280	5/8	1.32

MISCELLANEOUS

GREASE FITTING KIT

Part Number: Grease Fitting Kit
List Price: \$40.00



	1/8" NPT Straight 6 pcs.	1/4" - 28 Straight 6 pcs.
	3/16" Drive Straight 4 pcs.	1/8" NPT 45 1/8" NPT 90 3 pcs. ea.
	1/4" - 28 45 1/4" - 28 90 3 pc. ea.	5/16" Drive Straight 4 pcs.
32 Pieces		

INDIVIDUAL GREASE FITTINGS

Part Number	Description	List Price
GF-125NPTS	1/8" NPT STRAIGHT	\$.48
GF-125NPT45	1/8" NPT 45°	.96
GF-125NPT90	1/8" NPT 90°	.96
GF-187DS	3/16" DRIVE STRAIGHT	.42
GF-250-28S	1/4"-28 STRAIGHT	.32
GF-250-28-45	1/4"-28 45°	.84
GF-250-28-90	1/4"-28 90°	.84
GF-312DS	5/16" DRIVE STRAIGHT	.54

GREASE FITTING CAP

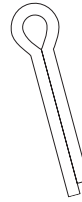
Low density polyethane cap plug for use with standard grease fittings.

Part Number	Description	List Price
CAP-GF-10	CAP PLUG	\$.10

COTTER PIN KIT

Part Number: Cotter Pin Kit
List Price: \$25.00



	1/16" X 1" 150 pcs.	3/32" X 1" 150 pcs.
	3/32" X 1 1/2" 100 pcs.	1/8" X 1 1/4" 75 pcs.
	1/8" X 2" 50 pcs.	5/32" X 2 1/2" 30 pcs.
555 Pieces		

GREASE GUN

Part Number: Grease Gun
List Price: \$19.95



Ready to use, multi-purpose, Texaco Starplex® 2 lithium grease in a pressurized container brings a new level of convenience to the vital maintenance of automotive, household, recreational and light industrial machinery. Unique, non-aerosol, patented process puts 125 psi behind premium grease. It's unique tip provides fast and clean dispensing for most common applications. It's unique tip fits all standard foreign and domestic fittings and a flexible clear plastic hose allows easy access for hard-to-reach applications. Texaco Starplex® 2 lithium complex grease is resistant to salt and freshwater and also provides rust and corrosion protection. Extreme pressure and anti-wear properties resist breakdown under the most severe conditions.