

GROVE CRANE

Kit Number	Code (Pg. x)	Rod X Bore Size	
GC9752100286	I-U-11	7 X 10	
GC9752100290	I-U-11	6 X 9	
GC9752100293	I-U-11	5 X 6	
GC9752100298		7-1/2" SWIVEL KIT	
GC9752100299		6" SWIVEL KIT	
GC9752100300		5-1/2" SWIVEL KIT	
GC9752100301		8-1/2" SWIVEL KIT	
GC9752100302		8-1/4" SWIVEL KIT	
GC9752100303		3-3/4" SWIVEL KIT	
GC9752100306		8-1/2" SWIVEL KIT	
GC9752100307		8-1/2" SWIVEL KIT	
GC9752100311		8-1/2" SWIVEL KIT	
GC9752100312		5-1/2" SWIVEL KIT	
GC9752100314		8-1/2" SWIVEL KIT	
GC9752100324	I-U-10	1-3/4 X 3	
GC9752100328		VALVE KIT	
GC9752100329	I-U-11	3-5/8 X 7	
GC9752100345	I-U-11	4-1/2 X 5-1/2	
GC9752100358		7-1/2" SWIVEL KIT	
GC9752100361		7" SWIVEL KIT	
GC9752100363	I-U-13	1-1/2 X 2-1/2	
GC9752100364	I-U-11	3-5/8 X 5	
GC9752100369	I-U-11	1-3/4 X 3	
GC9752100377	I-U-11	3 X 4-1/2	
GC9752100385		5-1/2" SWIVEL KIT	
GC9752100387	I-U-11	4 X 5-1/2	
GC9752100391		Valve Kit	
GC9752100445	I-U-11	6 X 9	
GC9752100461	I-U-11	3-5/8 X 5	
GC9752100463	I-UB-11	7 X 9	

GROVE CRANE

Kit Number	Code (Pg. x)	Rod X Bore Size	
GC9752100466		EXTENSION LINE KIT	
GC9752100467	I-U-11	3-5/8 X 7	
GC9752100468	I-U-11	3-5/8 X 5	
GC9752100470	I-UB-11	5 X 8-1/4	
GC9752100475	I-U-11	7 X 9	
GC9752100477	I-U-11	3 X 5-1/2	
GC9752100491	I-U-11	3-5/8 X 8-1/4	
GC9752100498		EXTENSION LINE KIT	
GC9752100532	I-UB-9	5 X 6	
GC9752100538		8-1/2" SWIVEL KIT	
GC9752100563		5-1/2" SWIVEL KIT	
GC9752101126		8-1/2" SWIVEL KIT	

HARSH MFG.

Kit Number	Code (Pg. x)	Rod X Bore Size	
HM-A9112	I-OB-1	1-7/8 X 2-1/4	
HM-A9114	I-OB-1	2-7/8" ROD	
HM-A9115	I-OB-1	3-3/8" ROD	
HM-A9116	I-OB-1	3-7/8" ROD	

Replacement Kits For

HEIL

HEIL

Refuse Collectors							
APPLICATION	CYL #	SERIAL #	CODE	ROD	BORE	KIT #	MISC
MODEL Formula 7000							
BODY HOIST	1-6191	405 - UP	I-U-4	3-1/4, 4	STAGES	HL-K272-4893	
GRABBER	1-4327	405 - UP	I-V-12	1-1/2	3	HL-K272-981	
	1-4843	405 - UP	I-V-12	1-1/2	3	HL-K272-981	
LIFT	1-4338	405 - UP	I-V-12	1-1/2	3	HL-K272-981	
PACKER	1-4298	1 to 447	I-U-10	4	5-1/2	HL-K272-989	
	1-4878	448 - UP	I-U-10	4	5-1/2	HL-K272-989	
REACH	1-4276	405 - UP	I-V-12	1-1/2	3	HL-K272-981	
TAILGATE	1-4305	405 - UP	I-V-10	1-1/2	3	HL-K272-966	
MODEL Half Pak III Full Eject							
LIFT ARM	1-5150	3105106 - UP	P-UB-14	2-1/2	4-1/2	HL-K272-3605	
MODEL Rapid Rail Auto-Side Loader 10/94 - 6/98							
ARM	1-6404		P-UB-14	2	3	HL-1-6404-100	
BODY RAISE	1-4807	To 1837	I-V-1	3-1/4, 4	STAGES	HL-1-4807-100	2 Stage
	1-6191	1838-UP	I-U-4	3-1/4, 4	STAGES	HL-K272-4893	2 Stage
DUMP	1-6160		I-UB-4	1-1/8	3	HL-1-6160-100	
DUMP & GRAB	1-6407		P-UB-14	1-1/8	3	HL-1-6402-100	
GRIP	1-6330	To 0329	I-UB-4	1-1/8	2-1/2	HL-K272-6627	
	1-6331	0330 - UP	I-UB-4	1-1/8	3	HL-1-6160-100	
IN-OUT	1-6162		I-UB-14	1-1/8	1-3/4	HL-1-6194-100	
	1-6403		I-UB-14	1-1/8	1-3/4	HL-1-6403-100	
LIFT	1-6161		I-UB-4	2	3	HL-1-6161-100	
PACKER	1-6164		I-UB-4	1-1/2	5	HL-1-6164-100	
	1-6406		P-UB-14	1-1/2	5	HL-1-6406-100	
TAILGATE	1-6405		P-UB-10	1-1/8	3	HL-1-6405-100	
TAILGATE RAISE	1-6163		I-UB-4	1-1/8	3	HL-1-6160-100	
MODEL Rapid Rail Auto-Side Loader Jan/2000 and after							
ARM	1-6407		P-UB-14	2	3	HL-1-6404-100	
BODY RAISE	1-6445		I-U-4	3-1/4	4	HL-K272-8491	
DUMP	1-6407		P-UB-14	1-1/8	3	HL-1-6402-100	
GRABBER CYLINDER	1-6416		P-UB-14	1-1/8	3	HL-1-6402-100	
IN-OUT	1-6403		I-UB-14	1-1/8	1-3/4	HL-1-6403-100	
PACKER	1-6407		P-UB-14	1-1/2	5	HL-1-6406-100	
TAILGATE RAISE	1-6405		P-UB-10	1-1/8	3	HL-1-6405-100	For units built Jan/2000 and after
	1-6754		I-U-10	1-1/2	3	HL-1-6754-001	For units built July/2003 and after
Refuse Rear Loaders							
APPLICATION	CYL #	SERIAL #	CODE	ROD	BORE	KIT #	MISC
MODEL							
	1-4270		I-V-12	4,5,6,7	STAGES	HL-K272-3991	
	1-4305, 1-4283, 1-4870		I-V-10	1-1/2	3	HL-K272-966	
MODEL FORMULA 4000 & 4000 MK IV							
BLADE	1-4108	4F-1014878 AND AFTER	I-V-10, 12	2-1/2	4	HL-K272-956	

Replacement Kits For

HEIL

Refuse Rear Loaders							
APPLICATION	CYL #	SERIAL #	CODE	ROD	BORE	KIT #	MISC
MODEL FORMULA 4000 & 4000 MK IV							
CONTAINER ARM	1-4283	4F-1014878 AND AFTER	I-V-10	1-1/2	3	HL-K272-966	
EJECTOR	1-4050		I-V-12	2,3,4,5	STAGES	HL-K272-933	18 & 20 yds, Narrow Units
	1-4050		I-V-12	2,3,4,5	STAGES	HL-K272-933	20 yd
	1-4053		I-V-12	2,3,4,5	STAGES	HL-K272-933	18 yd
	1-4053		I-V-12	2,3,4,5	STAGES	HL-K272-933	16 & 18 yds, Narrow Units
	1-4054		I-V-12	2,3,4,5	STAGES	HL-K272-933	25 yd
	1-4054		I-V-12	2,3,4,5	STAGES	HL-K272-933	25 yd, Narrow Units
	1-6222		I-U-12	3,4,5	STAGES	HL-K272-4885	11 & 13 yds
	1-6223		I-U-12	3,4,5	STAGES	HL-K272-4885	11 & 13 yds, Narrow Units
	1-6224, 1-6225, 1-6226	4F-1014878 AND AFTER	I-U-12	3,4,5,6	STAGES	HL-K272-4884	
GRAB-BAR	1-5069	4F-1014878 AND AFTER	I-U-10	1-1/2	2-1/2	HL-K272-958	
GRAB-BAR MECHANISM	1-4105	4F-1014878 AND AFTER	I-U-10	1-1/2	2-1/2	HL-K272-958	
REEVING	1-6189	4F-1014878 AND AFTER	I-U-10	4	5-1/2	HL-K272-989	
SLIDE	1-4110	4F-1014878 AND AFTER	I-V-10, 12	2	4-1/2	HL-K272-957	
TAILGATE RAISE	1-4110	4F-1014878 AND AFTER	I-V-1	2-1/2	3	HL-K272-937	
MODEL FORMULA 5000 & 5000 MK V							
CONTAINER ARM MECHANISM	1-4105, 1-4264		I-U-10	1-1/2	2-1/2	HL-K272-958	
CONTAINER DUMP	1-4283		I-V-10	1-1/2	3	HL-K272-966	
EJECTOR	1-4261, 1-4266, 1-4267		I-V-12	4,5,6	STAGES	HL-K272-976	
	1-4261, 63132-DA		I-V-12	4,5,6	STAGES	HL-K272-976	25 yd
	1-4266, 63108-DA		I-V-12	4,5,6	STAGES	HL-K272-976	20 yd
	1-4343	3722 - UP	I-U-1	4,5,6,7	STAGES	HL-K272-2774	32 yd
	1-4821	2740 THRU 3721	I-V-12	4,5,6,7	STAGES	HL-K272-3991	used on 32 yd
INSIDE LOWER PANEL	1-4347, 1-4887	2740 THRU 6845	I-V-10, 12	3-1/2	5-1/2	HL-K272-2776	
	1-4887	2740 - 6845	I-V-10, 12	3-1/2	5-1/2	HL-K272-2776	
	1-5111	6846 AND AFTER	P-UB-14	3-1/2	5-1/2	HL-K272-3609	
OUTSIDE UPPER PANEL	1-4824, 1-4884	2740 - 6845	I-V-10	2-1/2	5	HL-K272-2778	
	1-5110	6846 AND AFTER	P-UB-14	2-1/2	5	HL-K272-3608	
PACKER BLADE	1-4884		I-V-10	2-1/2	5	HL-K272-2778	Outside Cylinder

Replacement Kits For

HEIL

Refuse Rear Loaders							
APPLICATION	CYL #	SERIAL #	CODE	ROD	BORE	KIT #	MISC
MODEL FORMULA 5000 & 5000 MK V							
PACKER BLADE	1-4887		I-V-10, 12	3-1/2	5-1/2	HL-K272-2776	Inside Cylinder
REEVING	1-4309	5002740 THRU 5008724	I-U-10	4	5-1/2	HL-K272-989	
	1-6160	5008725 AND AFTER	I-U-10	4	5-1/2	HL-K272-989	
	1-6160	5008725 - UP	I-UB-4	1-1/8	3	HL-1-6160-100	
TAILGATE RAISE	1-4348	2740 THRU 4236	I-V-1	3-1/2	4	HL-K272-938	
	1-4880	4237 AND AFTER	I-V-1	3-1/2	4	HL-K272-938	
MODEL OUTSIDE UPPER PANEL							
2740 THRU 6845	1-4824, 1- 4884		I-V-10	2-1/2	5	HL-K272-2778	

HEIL REPAIR KITS

Kit Number	Cyl. # or Description	Code (Pg. x)	Rod X Bore Size
HL-001-6554-025		P-UB-10	1-1/2 X 3
HL-1-3688-06	1-3688	I-V-12	5, 6, 7, 8, 9-1/8 Stages
HL-1-3689-22	1-3689	I-V-12	4, 5, 6, 7, 8, 9-1/8 Stgs.
HL-1-3690-09	1-3690, 1-3691	I-V-10	4 X 6
HL-1-3692-07	1-3692, 1-3695, 1-3717, 1-3719	I-U-10	1-1/2 X 2-1/2
HL-1-3693-09	1-3693	I-V-10	2-1/2 X 5
HL-1-3706-05	1-3705, 1-3706	I-V-10	4 X 6
HL-1-4098K	1-4098	I-V-10	2-1/2 X 7-1/2
HL-1-4181-16	1-4181	I-U-5	4 X 4-1/2
HL-1-4807-100		I-U-1	3-1/4 X 4
HL-1-5098K	1-5098	P-UB-14	2-1/2 X 4-1/2
HL-1-5110-10	1-5110	P-UB-14	2-1/2 X 5
HL-1-6070K	1-6070	P-UB-14,12	1-1/2 X 3
HL-1-6085-1K	1-6085	P-UB-12,14	1-1/2 X 3
HL-1-6160-100	1-6160, 1-6163, 1-6331	1-UB-4	1-1/8 X 3
HL-1-6161-100	1-6161	1-UB-4	2 X 3
HL-1-6164-100	1-6164	1-UB-4	1-1/2 X 5
HL-1-6194-100	1-6162	I-UB-14	CYL #1-6162
HL-1-6402-100	1-6407	P-UB-14	1-1/8 X 3
HL-1-6403-100	1-6403	P-UB-14	1-1/8 X 1-3/4
HL-1-6404-100	1-6404	P-UB-14	2 X 3
HL-1-6405-100	1-6405	P-UB-10	1-1/8 X 3
HL-1-6406-100	1-6406	P-UB-14	1-1/2 X 5
HL-1-6754-001	1-6754	I-U-10	1-1/2 X 3
HL-272-2767	1-4297	I-V-5, 12	1-1/2 X 3-1/2

HEIL REPAIR KITS

Kit Number	Cyl. # or Description	Code (Pg. x)	Rod X Bore Size	
HL-6403-34	A1D 3705, 3706	I-V-10	4 X 6	
HL-A1C2819K	A1D 2819	P-V-12	4-1/2 X 6-1/2	
HL-A1D1275-2K	A1D 1275-2K	I-V-1	3-1/2" Rod	
HL-A1D1276K	A1D 1276	I-V-1	2, 3-1/2 Stages	
HL-A1D1285K	A1D 1285	I-V-1	2-3/8 Rod	
HL-A1D1868K	HH30 REEVING CYL.	I-V-12	3-1/2 X 5	
HL-A1D2105K	A1D 2105	N-V-12	1-1/2 X 3	
HL-A1D2801K	A1D 2801	I-V-1	3-1/2 Rod	
HL-A1D2844K	A1D 2844	P-V-12	2-3/4 X 5-1/2	
HL-A1D2847-1	A1D 2847	I-V-1	3-1/2 Rod	
HL-A1D2928K	A1D 2928	I-V-12	2 X 4-1/2	
HL-A1D3503K	A1D 3503	I-V-1	3-1/2 Rod	
HL-A1D3523K	A1D 3523	I-V-1	2, 3-1/2 Stages	
HL-A1D3541-14	LOAD LUGGER	I-U-10	4 X 4-1/2	
HL-A1D3672K	A1D 3672K	I-V-10, 12	2-1/4 X 3-1/2	
HL-A1D3809K	3809	I-U-10	2 X 4-1/2	
HL-A1D3856K	A1D 3856	I-U-1	2-1/4 X 3-1/2	
HL-A1D3874K	A1D 3874	I-V-1	3-1/2 Rod	
HL-A1D3917	A1D 3917	I-V-10	3-1/2 X 5	
HL-K22-3132	A1D 3606	I-U-10,12	1-1/2 X 3	
HL-K252-9310	AIE 2125, Mack MX-35, Hoist LIT-72-64	I-V-12	4-3/4, 6-1/4 Stages	
HL-K252-9312	AIE 2108, Mack MX-65, Hoist LIT 92-75	I, P-V-12	6-1/4, 8-5/8 Stages	
HL-K272-1024	1-4854, 1-4137, 1-4138, 1-4139, 1-4140	I-V-1	3-1/8, 4, 5 Stages	
HL-K272-1026	1-4141, 1-4142, 1-4143, 1-4144	I-V-1	4,5,6 Stages	
HL-K272-1027	1-4141, 1-4142, 1-4143, 1-4144	I-V-1	4,5,6 Stages	
HL-K272-2771	1-4344	I-V-10,12	2 X 5	
HL-K272-2774	1-4343	I-U-1	4, 5, 6, 7 Stages	
HL-K272-2775	1-4345	I-V-10, 12	2 X 4	
HL-K272-2776	1-4347, 1-4887	I-V-10, 12	3-1/2 X 5-1/2	
HL-K272-2778	1-4824, 1-4884	I-V-10	2-1/2 X 5	
HL-K272-2880	1-4467	I-U-1	4, 5 Stages	
HL-K272-2924	VALVE KIT			
HL-K272-3334	1-4149	I-V-10	3-1/2 X 5	
HL-K272-3572	1-4849	I-V-12	3-1/2 X 4	
HL-K272-3581	1-4882	I-V-10	4 X 5-1/2	
HL-K272-3582	1-4868, 1-4902, 1-4903, 1-6126	I-V-10	2 X 4	
HL-K272-3583	1-4869	I-V-10	3-1/2 X 5	
HL-K272-3584	1-4871	I-V-10, 12	2-1/2 X 4-1/2	
HL-K272-3586	1-4876	I-U-5	1-1/2 X 2-1/8	
HL-K272-3594	1-5088	P-UB-10	1-3/4 X 3	

HEIL REPAIR KITS

Kit Number	Cyl. # or Description	Code (Pg. x)	Rod X Bore Size
HL-K272-3595	1-5082	P-UB,12, 14	2 X 4
HL-K272-3600	1-5112, 1-5147	I, P-V, UB-14	3, 4, 5 Stages
HL-K272-3605	1-5150	P-UB-14	2-1/2 X 4-1/2
HL-K272-3607	1-5146	P-UB-14	4 X 5-1/2
HL-K272-3608	1-5110	P-UB-14	2-1/2 X 5
HL-K272-3609	1-5111	P-UB-14	3-1/2 X 5-1/2
HL-K272-3991	1-4821, 1-4270	I-V-12	4, 5, 6, 7 Stages
HL-K272-4285		I-V-1	4, 5, 6 Stages
HL-K272-4456		I-U-10	2 X 6
HL-K272-4872	TELE. MRK-CYL#50009-53-189		3",4", 5"
HL-K272-4884	1-6224, 1-6225, 1-6226	I-U-12	
HL-K272-4885	1-6222, 1-6223	I-U-12	
HL-K272-4893	1-6191, 1-4807	I-U-4	3-1/4 X 4
HL-K272-4932	A1E4159	I-U-1	3-1/8, 4, 5 Stages
HL-K272-4933	1-4137, 1-4138, 1-4139, 1-4140, A1D-4437	I-V-1	3-1/8, 4, 5 Stages
HL-K272-4938		I-U-1	4, 5, 6 Stages
HL-K272-4939	WIPERS,U-SEALS,GLAND & PISTON BEARINGS	4, 5, 6 Stages	
HL-K272-659	A1D 3873	I-V-12	2, 3-1/2 Stages
HL-K272-660	A1D 3923	I-V-10	3-1/2 X 5
HL-K272-661	A1D 3924	I-V-10	3-1/2 X 5-1/2
HL-K272-662	1-3623, A1D 3605	I-U-1	2-1/2 X 3
HL-K272-6627		1-UB-4	1-1/8 X 2-1/2
HL-K272-6627	1-6330	I-UB-4	1-1/8 X 2-1/2
HL-K272-663	A1D 3513	I-V-1	1-1/2" ROD
HL-K272-664	A1D 3921	I-U-10	2 X 4-1/2
HL-K272-665	A1D 3902, 1-4017	I-U-10	2-1/4 X 3-1/2
HL-K272-666	4 STAGE EJECTOR	I-V-12	2, 3, 4, 5 Stages
HL-K272-667	A1D 3904	I-U-10	2-3/4 X 5-1/2
HL-K272-668	A1D 3903	I-U-10	3-1/2 X 5
HL-K272-669	A1D 3802	I-U-1	3-1/2 X 4
HL-K272-672	A001-3807	I-U-10	2-1/4 X 5-1/2
HL-K272-673	A001-3531	I-U-10	1-1/2 X 3
HL-K272-674	A001-3525	I-U-10	2 X 4
HL-K272-676	A1D3835	I-V-12	2, 3, 4 Stages
HL-K272-677			2, 3, 4 Bearing Kit
HL-K272-8491	1-6445	I-U-4	3-1/4 X 4
HL-K272-933	1-4050, 1-4053, 1-4054	I-V-12	2, 3, 4, 5 Stages
HL-K272-934	1-4052	I-V-12	2, 3, 4 Stages
HL-K272-937	1-4820, 1-4070	I-V-1	2-1/2 X 3
HL-K272-938	1-4272, 1-4348, 1-4880	I-V-1	3-1/2 X 4

HEIL REPAIR KITS

Kit Number	Cyl. # or Description	Code (Pg. x)	Rod X Bore Size	
HL-K272-939	TAILGATE CYL.	I-V-12	2-1/2 X 3	
HL-K272-941	1-4081	I-U-10,12	2-3/4 X 5-1/2	
HL-K272-944	A1D 4100	I-V-10	2-1/4 X 3-1/2	
HL-K272-945	A1D 4101	I-V-10	2 X 4-1/2	
HL-K272-946	A1D 4092	I-N-4	1-3/4 X 3	
HL-K272-948	A1D 4093, 1-4340	I-V-10, 12	2-1/2 X 5	
HL-K272-949	A1D 4094	I-V-10, 12	3 X 5	
HL-K272-950	1-4097	I-V-10, 12	3 X 4-1/2	
HL-K272-951		I-V-10	2-1/2 X 7-1/2	
HL-K272-953	A1D 4103	I-V-10	3-1/2 X 5	
HL-K272-954	A1D 4104	I-V-10	3-1/2 X 5-1/2	
HL-K272-955	A1D 4106	I-V-10, 12	2, 3-1/2 Stages	
HL-K272-956	A1D 4108	I-V-10, 12	2-1/2 X 4	
HL-K272-956A	A1D 4108	I-V-10	2-1/2 X 4	
HL-K272-957	A1D 4110	I-V-10, 12	2 X 4-1/2	
HL-K272-957A	A1D 4110	I-V-10	2 X 4-1/2	
HL-K272-958	1-4339, 1-4105, 1-4264	I-U-10	1-1/2 X 2-1/2	
HL-K272-959	1-4341, 1-4864	I-V-10	2 X 4	
HL-K272-962	A001 - 4114	I-V-12	1-1/2 X 3	
HL-K272-963	1-4265	I-V-10, 12	2-1/4 X 5-1/2	
HL-K272-966	1-4305, 1-4283, 1-4870	I-V-10	1-1/2 X 3	
HL-K272-969		I-V-10	3-1/2 X 5	
HL-K272-971	1-4134	I-V-12	3, 4 Stages	
HL-K272-974		I-U-10	2 X 4	
HL-K272-976	1-4261, 1-4266, 1-4267	I-V-12	4, 5, 6 Stages	
HL-K272-980		N-N-12	4" Piston Ring Kit	
HL-K272-981	1-4883, 1-4276, 1-4338, 1-4327	I-V-12	1-1/2 X 3	
HL-K272-983		I-U-5	4 X 4-1/2	
HL-K272-989	1-4309, 1-4298, 1-4878, 1-6061, 1-6189	I-U-10	4 X 5-1/2	
HL-K272-994	1-4328, 1-4330	I-V-10	4 X 6	

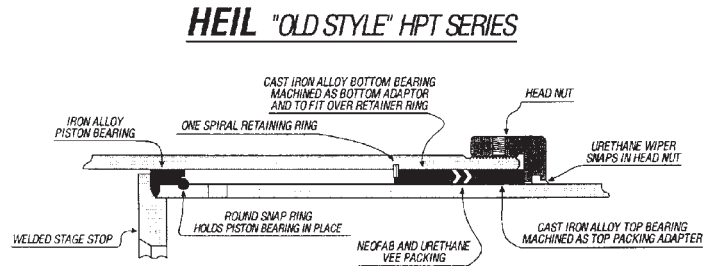
REPLACEMENT CYLINDERS FOR HEIL HPT SERIES DUMP BODIES

Part Number	Original Part Number	Changed To	Changed To	Changed To	Current Part Number
HPT53100	A1D1972	A1D3140	A1D3887	A1E3983	A1-4137
HPT53110	A1D1766	A1D3141	A1D3888	A1E3984	A1-4138
HPT53120	A1D1973	A1D3058	A1D3889	A1E3985	A1-4139
HPT53130	A1D1974	A1D3139	A1D3890	A1E3986	A1-4140
HPT63120	A1D2043	A1D3177	A1D3891	A1E3998	A1-4141
HPT63130	A1D2044	A1D3178	A1D3892	A1E3999	A1-4142
HPT63140	A1D2298	A1D3179	A1D3893	A1E4000	A1-4143
HPT63160	A1D2624	A1D3180	A1D3180	A1E3180	A1-4144

HEIL REPLACEMENT PARTS FOR DOUBLE ACTING AND SINGLE ACTING TELESCOPIC CYLINDERS

NOTE: The following parts and kits are for the old style Heil telescopic cylinders with vee packing and spiral retainer rings.

- PACKING:** Vee packing with no adaptors.
- WIPERS:** Some cylinders used bronze wipers trapped between the gland collar and the top bearing. Some cylinders used "AN" wipers which snap into a groove in the gland collar.
- BEARINGS:** Cast iron that serve as top and bottom adaptors for vee packing.
- STAGE O.D.'s:** 3-1/8 (3/16" C.S), 4, 5, 6, (1/4" C.S.)
- SPECIAL INFO.:** Uses one spiral type retainer ring per stage as internal stop. Gland collars have 2 "ears" cast 180° apart.
- IDENTIFICATION:** Metal tag attached to cylinder body with model/part number.
Example: AID3140



Part Number	Description
HL26B2090-2A	2" VEE SET & WIPER
HL26B2090-3A	3" VEE SET & WIPER
HL26B2266-1A	3-1/8" VEE SET & WIPER
HL26B2260-1A	4" VEE SET & WIPER
HL26B2260-2A	5" VEE SET & WIPER
HL26B2260-3A	6" VEE SET & WIPER
HL26A2083-1	2" SPIRAL RETAINER
HL26A2083-2	3" SPIRAL RETAINER
HL26A2240-1	3-1/8" SPIRAL RETAINER
HL26A2083-3	4" SPIRAL RETAINER
HL26A2083-4	5" SPIRAL RETAINER
HL26A2406-1	6" SPIRAL RETAINER
HL26A2080	2" PISTON RING
HL26A2081	3" PISTON RING
HL26A2082	4" PISTON RING
HL26B2221	5" PISTON RING
HL-26A4149	4-1/2" PISTON SEAL

Part Number	Description
HL-24	2" - 4" VEE SETS W/ WIPERS
HL-25	2" - 5" VEE SETS W/ WIPERS
HL-35	3-1/8" - 5" VEE SETS W/ WIPERS
HL-46	4" - 6" VEE SETS W/ WIPERS

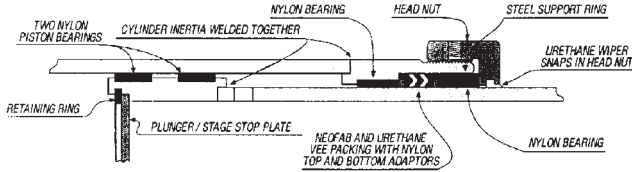
The following kits contain packing, wiper, top & bottom bearings & spiral snap ring.

Kit Number	Stage O.D.
HL-2PBTK	2"
HL-3.12PBTK	3-1/8"
HL-3PBTK	3"
HL-4PBTK	4"
HL-5PBTK	5"
HL-6PBTK	6"
HL-24PBTK	2" - 4"
HL-25PBTK	2" - 5"
HL-35PBTK	3-1/8" - 5"
HL-46PBTK	4" - 6"

HEIL REPLACEMENT PARTS FOR SINGLE ACTING DUMP TRUCK CYLINDERS

NOTE: The following parts and kits are for the old style Heil telescopic cylinders with vee packing and spiral retainers rings.

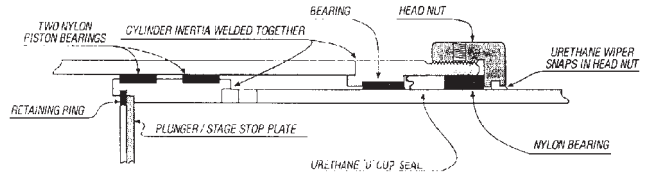
HEIL "NEW STYLE" HPT SERIES



- PACKING:** Vee packing with nylon top and bottom adaptors.
WIPERS: AN Style
BEARINGS: Split 1/8" thick nylon wear rings.
STAGE O.D.'s: 3-1/8, 4, 5, 6
SPECIAL INFO.: Has welded stop in gland. Cylinder disassembles by removing large Tru-Arc type snap ring which retains the cylinder base and bottom of each stage.
IDENTIFICATION: Metal tag attached to cylinder body with model/part number.
 Example: AIE3938

Part Number	Description	
HL26-4157-3	5" ID UPPER WEAR RING	
HL26-4157-4	6" ID UPPER WEAR RING	
HL26-4176-4	6-1/2" OD LOWER WEAR RING	
HL26-4394-1	3-1/8" ID UPPER WEAR RING	
HL26-4394-2	4" ID UPPER WEAR RING	
HL26-4395-1	3-1/2" OD LOWER WEAR RING	
HL26-4395-2	4-1/2" OD LOWER WEAR RING	
HL26-4395-3	5-1/2" OD LOWER WEAR RING	
HL-K272-1024	3-1/8" - 5" PACKING, WIPERS, O-RING	
HL-K272-1026	4" - 6" PACKING, WIPERS, O-RING	
HL-K272-1027	4" - 6" PACKING, WIPERS, WEAR RINGS	

HEIL "NEW STYLE" HPT SERIES



- PACKING:** Urethane U-Seals
WIPERS: AN Style
BEARINGS: Nylon bearings above and below U-Seal
STAGE O.D.'s: 3-1/8, 4, 5, 6
SPECIAL INFO.: Welded stop in gland. Tru-Arc type snap ring which retains the cylinder base and bottom of each stage.
IDENTIFICATION: Metal tag attached to cylinder body with model/part number.
 Example: AIE4159

Part Number	Description	
HL-K272-4932	3-1/8, 4, 5" stages - U-seals, wipers, gland bearing, quattro rings, nylon slug, set screw	
HL-K272-4938	4, 5, 6" stages - U-seals, wipers, gland bearings, quattro ring, nylon slug, set screw	
HL-K272-4939	4, 5, 6" stages - U-seals, wipers, bearings, quattro ring, nylon slug, set screw	

HEIL SPECIAL HEIL TELESCOPIC VEE SETS

Part Number	Size	
HL26A2038	2-1/2 X 2-7/8	
HL26A2039	3-1/4 X 3-5/8	
HL26A2215	1-3/4 X 2-1/8	
HL26B2191-2	6-1/4 X 6-3/4	
HL26B2202-1H	2 X 3 W/WIPER	

Part Number	Size	
HL26B2203-1H	3-1/2 X 5 W/WIPER	
HL26B2482-1	8-5/8 X 9-5/16	
HL26B2484-1	6-1/4 X 7-5/16	
HL30004X182	3 X 3-1/2 X 1.825	
HL40004X184	4 X 4-1/2 X 1.845	

Replacement Kits For

HIAB

HIAB

Cranes							
APPLICATION	CYL #	SERIAL #	CODE	ROD	BORE	KIT #	MISC
MODEL 045							
1ST EXTENSION			P-U-15	40 mm	55 mm	HIAB-542121	
2ND & 3RD EXT.			P-U-15	30 mm	50 mm	HIAB-542130	
INNER BOOM			P-U-15	50 mm	90 mm	HIAB-542105	
LONG OUTRIGGER			P-U-15	50 mm	70 mm	HIAB-542156	
OUTER BOOM			P-U-15	50 mm	90 mm	HIAB-542113	
SWING			I-N-15	N/A	100 mm	HIAB-542148	
MODEL 070							
BOOM EXT			P-U-13	33 mm	60 mm	HIAB-330-0897	
	AW		P-U-13	35, 82 mm	60, 92 mm	HIAB-330-0731	2-Stage Telescopic
INNER BOOM			P-U-13	90 mm	125 mm	HIAB-330-0871	
OUTER BOOM			P-U-13	70 mm	100 mm	HIAB-330-0889	
MODEL 071							
BOOM EXT	3400441		P-U-13	35, 82 mm	60, 92 mm	HIAB-330-0731	
	3478378		I-U-15	50 mm	80 mm	HIAB-330-1044	
	3501515		I-U-15	50 mm	80 mm	HIAB-330-1044	
	3509052		P-U-13	35, 82 mm	60, 92 mm	HIAB-330-0731	
INNER BOOM	3554589		P-U-13	90 mm	125 mm	HIAB-330-0871	
OUTER BOOM	3300889		P-U-13	70 mm	100 mm	HIAB-330-0889	
OUTRIGGER	3502414		P-U-15	70 mm	90 mm	HIAB-330-1028	
MODEL 100							
BOOM EXT	A		P-SP-15	45 mm	70 mm	HIAB-330-0714	
INNER BOOM			I-SP-15	80 mm	125 mm	HIAB-330-0692	
MODEL 1165							
INNER BOOM			I-SP-15	80 mm	140 mm	HIAB-622-1688	
OUTER BOOM			I-SP-15	80 mm	140 mm	HIAB-622-1688	
MODEL 1165/1							
BOOM EXT	A		I-U-15	50 mm	80 mm	HIAB-330-1044	
	AW	TO 1977	P-U-13	40, 90 mm	70, 105 mm	HIAB-330-0668	2-Stage Telescopic
INNER BOOM			I-U-13	80 mm	140 mm	HIAB-330-1036	
OUTER BOOM			I-U-13	80 mm	140 mm	HIAB-330-1036	
MODEL 1165/2							
BOOM EXT	3407110		P-U-13	40, 90 mm	70, 105 mm	HIAB-330-0668	
	3430405		I-U-13	33 mm	60 mm	HIAB-330-1001	
	6215645		I-U-15	50 mm	80 mm	HIAB-330-1044	
INNER BOOM	3445038		I-SP-15	80 mm	140 mm	HIAB-622-1688	
OUTER BOOM	3445852		I-SP-15	80 mm	140 mm	HIAB-622-1688	
MODEL 120							
BOOM EXT			P-U-15	45 mm	63 mm	HIAB-330-1311	
			P-U-15	40 mm	63 mm	HIAB-330-1320	Updated Version
OUTER BOOM			P-U-15	90 mm	125 mm	HIAB-330-1303	
MODEL 140							
BOOM EXT			I-U-15	50 mm	80 mm	HIAB-330-1044	
	AW		P-U-13	40, 90 mm	70, 105 mm	HIAB-330-0668	
	AWV		I-U-13	33 mm	60 mm	HIAB-330-1001	
INNER BOOM			I-U-13	80 mm	140 mm	HIAB-330-1036	
OUTER BOOM			I-U-13	80 mm	140 mm	HIAB-330-1036	

Replacement Kits For

HIAB

Cranes							
APPLICATION	CYL #	SERIAL #	CODE	ROD	BORE	KIT #	MISC
MODEL 175							
BOOM EXT	3608603		P-U-15	40 mm	63 mm	HIAB-330-1613	
	3616819		P-U-15	45 mm	70 mm	HIAB-330-1583	
	3622100		P-U-15	45 mm	70 mm	HIAB-330-1583	
	3625681		P-U-15	40 mm	63 mm	HIAB-330-1613	
EXTENSION	3583872		P-U-15	25 mm	40 mm	HIAB-330-1052	
INNER BOOM	3625745		P-U-15	100 mm	160 mm	HIAB-330-1443	
OUTER BOOM	3561330		P-U-15	100 mm	140 mm	HIAB-330-1290	
OUTRIGGER	3531031		P-U-15	70 mm	90 mm	HIAB-330-1028	
	3592774		P-U-15	70 mm	90 mm	HIAB-330-1028	
	3594769		P-U-15	70 mm	90 mm	HIAB-330-1028	
MODEL 1770							
BOOM EXT	A		I-U-15	50 mm	80 mm	HIAB-330-1044	
	AW		P-U-13	40, 90 mm	70, 105 mm	HIAB-330-0668	2-Stage Telescopic
INNER BOOM			P-U-13	80 mm	125 mm	HIAB-872-8330	
OUTER BOOM			P-U-13	100 mm	180 mm	HIAB-872-8348	
OUTRIGGER			P-U-15	90 mm	110 mm	HIAB-330-0773	13 Ton Leg
MODEL 2640							
BOOM EXT			I-U-13	63 mm	100 mm	HIAB-330-0641	
INNER BOOM			P-U-13	100 mm	140 mm	HIAB-872-8038	
OUTER BOOM			P-U-13	100 mm	140 mm	HIAB-872-8038	
MODEL 650							
BOOM EXT	3088031		I-U-13	33 mm	60 mm	HIAB-330-1001	
	AW		P-U-13	35, 82 mm	60, 92 mm	HIAB-330-0731	Model 650/1, 2-Stage Telescopic
	AW		P-U-13	32, 85 mm	65, 100 mm	HIAB-330-0633	2-Stage Telescopic
D. BOOM EXT	3080005		P-U-13	35, 82 mm	60, 92 mm	HIAB-330-0731	
	3199622		P-U-13	32, 85 mm	65, 100 mm	HIAB-330-0633	
	3402746		P-U-13	32, 85 mm	65, 100 mm	HIAB-330-0633	
	3411176		P-U-13	32, 85 mm	65, 100 mm	HIAB-330-0633	
	3419258		P-U-13	35, 82 mm	60, 92 mm	HIAB-330-0731	
	6216765		P-U-13	32, 85 mm	65, 100 mm	HIAB-330-0633	
D.A. INNER BOOM	3051919		I-U-15	100 mm	140 mm	HIAB-330-0501	
	3091919		I-U-15	100 mm	140 mm	HIAB-330-0501	
	3099199	90001-->	I-U-13	100 mm	140 mm	HIAB-330-0749	
INNER BOOM		90001-->	I-U-13	100 mm	140 mm	HIAB-330-0749	
	3155528	-->65450	I-U-1	140 mm	160 mm	HIAB-330-0218	
MODEL 985							
1ST EXTENSION			P-SP-15	45 mm	70 mm	HIAB-330-0714	
2ND EXTENSION			P-U-13	35, 82 mm	60, 92 mm	HIAB-330-0731	
3RD EXTENSION			I-U-15	33 mm	60 mm	HIAB-330-0595	
AH EXTENSION			P-SP-15	45 mm	70 mm	HIAB-330-0714	
INNER BOOM			I-SP-15	80 mm	125 mm	HIAB-330-0692	
OUTER BOOM			I-SP-15	80 mm	125 mm	HIAB-330-0692	

REPLACEMENT KITS FOR HIAB

HIAB

Kit Number	Code (Pg. x)	Rod X Bore Size	
HIAB-121039	P-U-15	63 x 110 mm	
HIAB-330-0218	I-U-1	140 X 160 mm	
HIAB-330-0315	N-N-5	100 mm Piston Kit	
HIAB-330-0498	N-N-5	105 MM Piston Kit	
HIAB-330-0501	I-U-15	100 X 140 mm	
HIAB-330-0528	N-N-5	105 mm Piston Kit	
HIAB-330-0595	I-U-15	33 X 60 mm	
HIAB-330-0625	P-O-1	78 mm Rod Kit	
HIAB-330-0633	P-U-15	32, 85 X 65, 100 mm	
HIAB-330-0641	I-U-15	63 X 100 mm	
HIAB-330-0668	P-U-15	40 , 90 mm Stage OD's	
HIAB-330-0692	I-U-15	80 X 125 mm	
HIAB-330-0714	P-SP-15	45 X 70 mm	
HIAB-330-0731	P-U-15	35, 80 mm Stage OD's	
HIAB-330-0749	I-U-15	100 X 140 mm	
HIAB-330-0773	P-U-15	90 X 110 mm	
HIAB-330-0871	P-U-15	90 X 125 mm	
HIAB-330-0889	P-U-15	70 X 100 mm	
HIAB-330-0897	P-U-15	33 X 60 mm	
HIAB-330-0951	P-U-15	100 X 180 mm	
HIAB-330-1001	I-U-15	33 X 60 mm	
HIAB-330-1028	P-U-15	70 X 90 mm	
HIAB-330-1036	I-U-15	80 X 140 mm	
HIAB-330-1044	I-U-15	50 X 80 mm	
HIAB-330-1052	P-U-15	25 X 40 mm	
HIAB-330-1061	P-U-15	70 X 125 mm	
HIAB-330-1231	P-U-15	90 X 160 mm	
HIAB-330-1249	P-U-15	40 x 70 mm	
HIAB-330-1290	P-U-15	100 X 140 mm	
HIAB-330-1303	P-U-15	90 X 125 mm	
HIAB-330-1311	P-U-15	45 X 63 mm	

Kit Number	Code (Pg. x)	Rod X Bore Size	
HIAB-330-1320	P-U-15	40 X 63 mm	
HIAB-330-1443	P-U-15	100 X 160 mm	
HIAB-330-1583	P-U-15	45 X 70 mm	
HIAB-330-1613	P-U-15	40 X 63 mm	
HIAB-542105	P-U-15	50 X 90 mm	
HIAB-542113	P-U-15	50 X 90 mm	
HIAB-542121	P-U-15	40 X 55 mm	
HIAB-542130	P-U-15	30 X 50 mm	
HIAB-542148	I-N-15	100 mm Piston Kit	
HIAB-542156	P-U-15	50 X 70 mm	
HIAB-607-2267	I-O-15	74 X 85 mm	
HIAB-622-1599	I-U-15	63 X 125 mm	
HIAB-622-1661	I-SP-15	63 X 140 mm	
HIAB-622-1670	I-SP-15	70 X 140 mm	
HIAB-622-1688	I-SP-15	80 X 140 mm	
HIAB-622-2170	TELE.	32, 90 mm Stage OD's	
HIAB-711-4659	P-U-15	50 x 110 mm	
HIAB-711-4660	I-U-15	30 x 50 mm	
HIAB-711-5366	I,P-U-15	80 X 140 mm	
HIAB-711-5834	I-U-15	30 X 70 mm	
HIAB-712-4173	P,I-U-15	100 x 180 mm	
HIAB-712-4174	I-U-15	50 x 90 mm	
HIAB-825-2050	P-U-15	45 X 80 mm	
HIAB-872-8038	P-U-15	100 X 140 mm	
HIAB-872-8046	P-U-15	100 X 140 mm	
HIAB-872-8330	P-U-15	80 X 125 mm	
HIAB-872-8348	P-U-15	100 X 180 mm	
HIAB-872-8356	I-SP-15	50 X 80 mm	
HIAB-995-0621	N-N-4	100 mm Piston Kit	
HIAB-995-9122	N-N-5	105 mm Piston Kit	

Replacement Kits For

HITACHI

Excavators							
APPLICATION	CYL #	SERIAL #	CODE	ROD	BORE	KIT #	MISC
MODEL EX100							
ARM			P-UB-10	75 mm	105 mm	HIT-4206343	
BOOM			P-UB-10	70 mm	95 mm	HIT-4206340	
BUCKET			P-UB-10	65 mm	95 mm	HIT-4206345	
MODEL EX120							
ARM			P-UB-10	80 mm	115 mm	HIT-4206344	
BOOM			P-UB-10	75 mm	105 mm	HIT-4206343	
BUCKET			P-UB-10	65 mm	95 mm	HIT-4206345	
MODEL EX120-2							
ARM			P-UB-10	80 mm	110 mm	HIT-4286463	
BOOM			P-UB-10	70 mm	105 mm	HIT-4286459	
BUCKET			P-UB-10	65 mm	95 mm	HIT-4286739	
MODEL EX150							
ARM	4193532	01001-UP	P-UB-10	85 mm	120 mm	HIT-4216264P	
BOOM LH	4193533	01001-UP	P-UB-10	80 mm	115 mm	HIT-4369893P	
BOOM RH	4193531	01001-UP	P-UB-10	80 mm	115 mm	HIT-4369893P	
BUCKET	4193534	01001-UP	P-UB-10	80 mm	115 mm	HIT-4369893P	
MODEL EX150LC-5, EX160LC-5							
ARM	4370784	1002-UP	P-UB-10	85 mm	115 mm	HIT-4389720	
	4370784	1002-UP		85 mm		HIT-4272960	Bushing
	4370784	1002-UP			115 mm	HIT-0686405	Wear Ring
	4370784	1002-UP			115 mm	HIT-0310908	Wear Ring
BOOM LH	4370783	1002-UP	P-UB-10	80 mm	110 mm	HIT-4389719	
	4370783	1002-UP		80 mm		HIT-0309304	Bushing
	4370783	1002-UP			110 mm	HIT-0667008	Wear Ring
	4370783	1002-UP			110 mm	HIT-0298907	Wear Ring
BOOM RH	4370782	1002-UP	P-UB-10	80 mm	110 mm	HIT-4389719	
	4370782	1002-UP		80 mm		HIT-0309304	Bushing
	4370782	1002-UP			110 mm	HIT-0298907	Wear Ring
	4370782	1002-UP			110 mm	HIT-0667008	Wear Ring
BUCKET	4370785	1002-UP	P-UB-10	75 mm	105 mm	HIT-4389721	
	4370785	1002-UP		75 mm		HIT-0310504	Bushing
	4370785	1002-UP			105 mm	HIT-0310510	Wear Ring
	4370785	1002-UP			105 mm	HIT-0666808	Wear Ring
MODEL EX200, EX200LC							
ARM	4180278	30001-UP	P-UB-10	95 mm	135 mm	HIT-4206019	
BOOM LH	4180277	30001-UP	P-UB-10	85 mm	125 mm	HIT-4206018	
	4223826	30001-UP	P-UB-10	85 mm	125 mm	HIT-4206018	
BOOM RH	4180276	30001-UP	P-UB-10	85 mm	125 mm	HIT-4206018	
	4223825	30001-UP	P-UB-10	85 mm	125 mm	HIT-4206018	
BUCKET	4180279	30001-UP	P-UB-10	80 mm	120 mm	HIT-4206020	
CLAMSHELL	2024987	30001-UP	P-UB-10	85 mm	135 mm	HIT-4214722	
MODEL EX200-2, EX200LC-2							
ARM	4250226	60001-D91/12	P-UB-10	95 mm	130 mm	HIT-4286780	
	4250226	60001-UP		95 mm		HIT-0309204	Bushing
	4250226	60001-UP			130 mm	HIT-0254309	Wear Ring
	4250226	60001-UP			130 mm	HIT-0409912	Wear Ring

Hercules Bulldog and original equipment Hitachi kits may not include the necessary wear rings for your cylinder rebuild. Please ask your sales representative for a cross-reference if no complementary parts are listed.

Replacement Kits For

HITACHI

HITACHI

Excavators							
APPLICATION	CYL #	SERIAL #	CODE	ROD	BORE	KIT #	MISC
MODEL EX200-2, EX200LC-2							
BOOM LH	4250224	60001-D91/12	P-UB-10	85 mm	120 mm	HIT-4286774	
	4250224	60001-UP		85 mm		HIT-4272960	Bushing
	4250224	60001-UP			120 mm	HIT-0261308	Wear Ring
	4250224	60001-UP			120 mm	HIT-0309309	Wear Ring
BOOM RH	4250223	60001-D91/12	P-UB-10	85 mm	120 mm	HIT-4286774	
	4250223	60001-UP		85 mm		HIT-4272960	Bushing
	4250223	60001-UP			120 mm	HIT-0309309	Wear Ring
	4250223	60001-UP			120 mm	HIT-0261308	Wear Ring
BUCKET	4250225	60001-D91/12	P-UB-10	75 mm	110 mm	HIT-4286784	
	4250225	60001-UP		75 mm		HIT-0310504	Bushing
	4250225	60001-UP			110 mm	HIT-0410005	Wear Ring
	4250225	60001-UP			110 mm	HIT-0298907	Wear Ring
BUCKET (River)	4287889	60001-D91/12	P-UB-10	65 mm	95 mm	HIT-4286739	
	4287889	60001-UP		65 mm		HIT-0310604	Bushing
	4287889	60001-UP			95 mm	HIT-0310609	Wear Ring
	4287889	60001-UP			95 mm	HIT-0310610	Wear Ring
CLAMSHELL	4288743	60001-UP	P-UB-10	85 mm	125 mm	HIT-4369902	
	4288743	60001-UP		85 mm		HIT-4272960	Bushing
	4288743	60001-UP			125 mm	HIT-0309009	Wear Ring
	4288743	60001-UP			125 mm	HIT-0223713	Wear Ring
ROLLING	4305528	65612-UP	P-UB-10	95 mm	150 mm	HIT-4320954	
	4305528	65612-UP		95 mm		HIT-0309204	Bushing
	4305528	65612-UP			150 mm	HIT-0387305	Wear Ring
	4305528	65612-UP			150 mm	HIT-0237220	Wear Ring
MODEL EX200-3, EX200LC-3, EX200H-3, EX200LCH-3							
ARM	4314778	D95/06-UP	P-UB-10	95 mm	130 mm	HIT-4369914	
	4314778	78001-UP		95 mm		HIT-0309204	Bushing
	4314778	78001-UP			130 mm	HIT-0409912	Wear Ring
	4314778	78001-UP			130 mm	HIT-0254309	Wear Ring
BOOM LH	4250224	D95/06-UP	P-UB-10	85 mm	120 mm	HIT-4369901	
	4250224	78001-UP		85 mm		HIT-4272960	Bushing
	4250224	78001-UP			120 mm	HIT-0261308	Wear Ring
	4250224	78001-UP			120 mm	HIT-0309309	Wear Ring
BOOM RH	4250223	D95/06-UP	P-UB-10	85 mm	120 mm	HIT-4369901	
	4250223	78001-UP		85 mm		HIT-4272960	Bushing
	4250223	78001-UP			120 mm	HIT-0309309	Wear Ring
	4250223	78001-UP			120 mm	HIT-0261308	Wear Ring
BUCKET	4250225	D95/06-UP	P-UB-10	75 mm	110 mm	HIT-4369890	
	4250225	78001-UP		75 mm		HIT-0310504	Bushing
	4250225	78001-UP			110 mm	HIT-0410005	Wear Ring
	4250225	78001-UP			110 mm	HIT-0298907	Wear Ring
BUCKET (River)	4287889	D95/06-UP	P-UB-10	65 mm	95 mm	HIT-4369766	
	4287889	78001-UP		65 mm		HIT-0310604	Bushing
	4287889	78001-UP			95 mm	HIT-0310610	Wear Ring
	4287889	78001-UP			95 mm	HIT-0310609	Wear Ring
CLAMSHELL	4288743	78001-D95/05	P-UB-10	85 mm	125 mm	HIT-4369902	

Hercules Bulldog and original equipment Hitachi kits may not include the necessary wear rings for your cylinder rebuild. Please ask your sales representative for a cross-reference if no complementary parts are listed.

Replacement Kits For

HITACHI

HITACHI

Excavators							
APPLICATION	CYL #	SERIAL #	CODE	ROD	BORE	KIT #	MISC
MODEL EX200-3, EX200LC-3, EX200H-3, EX200LCH-3							
CLAMSHELL	4288743	D95/06-UP	P-UB-10	85 mm	125 mm	HIT-4369902	
	4288743	78001-UP		85 mm		HIT-4272960	Bushing
	4288743	78001-UP			125 mm	HIT-0309009	Wear Ring
	4288743	78001-UP			125 mm	HIT-0223713	Wear Ring
MODEL EX200-5, EX200LC-5, EX210H-5, EX210LCH-5							
ARM	4316930	050001-UP	P-UB-10	95 mm	130 mm	HIT-4364916	
	4316930	050001-UP		95 mm		HIT-0309204	Bushing
	4316930	050001-UP			130 mm	HIT-0667409	Wear Ring
	4316930	050001-UP			130 mm	HIT-0254309	Wear Ring
	4372914	050001-UP	P-UB-10	95 mm	130 mm	HIT-4364916	
	4372914	050001-UP		95 mm		HIT-0309204	Bushing
	4372914	050001-UP			130 mm	HIT-0667409	Wear Ring
	4372914	050001-UP			130 mm	HIT-0254309	Wear Ring
BOOM LH	4317394	050001-UP	P-UB-10	85 mm	120 mm	HIT-4364915	
	4317394	050001-UP		85 mm		HIT-4272960	Bushing
	4317394	050001-UP			120 mm	HIT-0667206	Wear Ring
	4317394	050001-UP			120 mm	HIT-0261308	Wear Ring
	4372913	050001-UP	P-UB-10	85 mm	120 mm	HIT-4364915	
	4372913	050001-UP		85 mm		HIT-4272960	Bushing
	4372913	050001-UP			120 mm	HIT-0667206	Wear Ring
	4372913	050001-UP			120 mm	HIT-0261308	Wear Ring
BOOM RH	4317393	050001-UP	P-UB-10	85 mm	120 mm	HIT-4364915	
	4317393	050001-UP		85 mm		HIT-4272960	Bushing
	4317393	050001-UP			120 mm	HIT-0667206	Wear Ring
	4317393	050001-UP			120 mm	HIT-0261308	Wear Ring
	4372912	050001-UP	P-UB-10	85 mm	120 mm	HIT-4364915	
	4372912	050001-UP		85 mm		HIT-4272960	Bushing
	4372912	050001-UP			120 mm	HIT-0667206	Wear Ring
	4372912	050001-UP			120 mm	HIT-0261308	Wear Ring
BUCKET	4318327	050001-UP	P-UB-10	75 mm	110 mm	HIT-4369890	
	4318327	050001-UP		75 mm		HIT-0310504	Bushing
	4318327	050001-UP			110 mm	HIT-0298907	Wear Ring
	4318327	050001-UP			110 mm	HIT-0410005	Wear Ring
	4372915	050001-UP	P-UB-10	75 mm	110 mm	HIT-4369890	
	4372915	050001-UP		75 mm		HIT-0310504	Bushing
	4372915	050001-UP			110 mm	HIT-0298907	Wear Ring
	4372915	050001-UP			110 mm	HIT-0410005	Wear Ring
BUCKET (River)	4371061	050001-UP	P-UB-10	65 mm	95 mm	HIT-4369766	
	4371061	050001-UP		65 mm		HIT-0310604	Bushing
	4371061	050001-UP			95 mm	HIT-0310610	Wear Ring
	4371061	050001-UP			95 mm	HIT-0310609	Wear Ring
CLAMSHELL	4288743	050001-UP	P-UB-10	85 mm	125 mm	HIT-4369902	
	4288743	050001-UP		85 mm		HIT-4272960	Bushing
	4288743	050001-UP			125 mm	HIT-0309009	Wear Ring
	4288743	050001-UP			125 mm	HIT-0223713	Wear Ring

Hercules Bulldog and original equipment Hitachi kits may not include the necessary wear rings for your cylinder rebuild. Please ask your sales representative for a cross-reference if no complementary parts are listed.

Replacement Kits For

HITACHI

Excavators							
APPLICATION	CYL #	SERIAL #	CODE	ROD	BORE	KIT #	MISC
MODEL EX220							
ARM			P-UB-10	100 mm	145 mm	HIT-4203831	
BOOM			P-UB-10	90 mm	135 mm	HIT-4203830	
BUCKET			P-UB-10	90 mm	135 mm	HIT-4203830	
MODEL EX220-2							
ARM			P-UB-10	100 mm	135 mm	HIT-9103843	
BOOM			P-UB-10	90 mm	125 mm	HIT-9103842	
BUCKET			P-UB-10	85 mm	125 mm	HIT-9103844	
MODEL EX220-3, EX220LC-3							
ARM	9101317	10001-UP	P-UB-10	100 mm	135 mm	HIT-9103843	
	9101317	10001-UP		100 mm		HIT-4272963	Bushing
	9101317	10001-UP			135 mm	HIT-4252191	Wear Ring
	9101317	10001-UP			135 mm	HIT-4185246	Wear Ring
BOOM LH	9101316	10001-UP	P-UB-10	90 mm	125 mm	HIT-9103842	
	9101316	10001-UP		90 mm		HIT-4272961	Bushing
	9101316	10001-UP			125 mm	HIT-4253562	Wear Ring
	9101316	10001-UP			125 mm	HIT-4168234	Wear Ring
BOOM RH	9101315	10001-UP	P-UB-10	90 mm	125 mm	HIT-9103842	
	9101315	10001-UP		90 mm		HIT-4272961	Bushing
	9101315	10001-UP			125 mm	HIT-4168234	Wear Ring
	9101315	10001-UP			125 mm	HIT-4253562	Wear Ring
BUCKET	9101318	10001-UP	P-UB-10	85 mm	125 mm	HIT-9103844	
	9101318	10001-UP		85 mm		HIT-4272960	Bushing
	9101318	10001-UP			125 mm	HIT-4168234	Wear Ring
	9101318	10001-UP			125 mm	HIT-4253562	Wear Ring
MODEL EX220-5, EX220LC-5, EX230-5, EX230LC-5, EX230H-5, EX230LCH-5							
ARM	9101317	1001-UP	P-UB-14	100 mm	135 mm	HIT-9178284	
	9101317	1001-UP		100 mm		HIT-4272963	Bushing
	9101317	1001-UP			135 mm	HIT-4185246	Wear Ring
	9101317	1001-UP			135 mm	HIT-4252191	Wear Ring
	9147233	D96/12-UP	P-UB-14	100 mm	135 mm	HIT-9178284	
	9147233	1001-UP		100 mm		HIT-4272963	Bushing
	9147233	1001-UP			135 mm	HIT-4185246	Wear Ring
	9147233	1001-UP			135 mm	HIT-4252191	Wear Ring
ARM (River)	4380500	1001-UP	P-UB-10	105 mm	145 mm	HIT-4369943	
	4380500	1001-UP		105 mm		HIT-0373405	Bushing
	4380500	1001-UP			145 mm	HIT-0373413	Wear Ring
	4380500	1001-UP			145 mm	HIT-0492209	Wear Ring
BOOM LH	9101316	1001-UP	P-UB-14	90 mm	125 mm	HIT-9178283	
	9101316	1001-UP		90 mm		HIT-4272961	Bushing
	9101316	1001-UP			125 mm	HIT-4253562	Wear Ring
	9101316	1001-UP			125 mm	HIT-4168234	Wear Ring
	9147232	D96/12-UP	P-UB-14	90 mm	125 mm	HIT-9178283	
	9147232	1001-UP		90 mm		HIT-4272961	Bushing
	9147232	1001-UP			125 mm	HIT-4168234	Wear Ring
	9147232	1001-UP			125 mm	HIT-4253562	Wear Ring
BOOM RH	9101315	1001-UP	P-UB-14	90 mm	125 mm	HIT-9178283	

Hercules Bulldog and original equipment Hitachi kits may not include the necessary wear rings for your cylinder rebuild. Please ask your sales representative for a cross-reference if no complementary parts are listed.

Replacement Kits For

HITACHI

HITACHI

Excavators							
APPLICATION	CYL #	SERIAL #	CODE	ROD	BORE	KIT #	MISC
MODEL EX220-5, EX220LC-5, EX230-5, EX230LC-5, EX230H-5, EX230LCH-5							
BOOM RH	9101315	1001-UP		90 mm		HIT-4272961	Bushing
	9101315	1001-UP			125 mm	HIT-4253562	Wear Ring
	9101315	1001-UP			125 mm	HIT-4168234	Wear Ring
	9147231	1001-D96/11	P-UB-14	90 mm	125 mm	HIT-9178283	
	9147231	1001-UP		90 mm		HIT-4272961	Bushing
	9147231	1001-UP			125 mm	HIT-4168234	Wear Ring
	9147231	1001-UP			125 mm	HIT-4253562	Wear Ring
BUCKET	9101318	1001-UP	P-UB-14	85 mm	125 mm	HIT-9178294	
	9101318	1001-UP		85 mm		HIT-4272960	Bushing
	9101318	1001-UP			125 mm	HIT-4168234	Wear Ring
	9101318	1001-UP			125 mm	HIT-4253562	Wear Ring
	9147234	D96/12-UP	P-UB-14	85 mm	125 mm	HIT-9178294	
	9147234	1001-UP		85 mm		HIT-4272960	Bushing
	9147234	1001-UP			125 mm	HIT-4253562	Wear Ring
	9147234	1001-UP			125 mm	HIT-4168234	Wear Ring
BUCKET (River)	4371061	1001-UP	P-UB-10	65 mm	95 mm	HIT-4369766	
	4371061	1001-UP		65 mm		HIT-0310604	Bushing
	4371061	1001-UP			95 mm	HIT-0310610	Wear Ring
	4371061	1001-UP			95 mm	HIT-0310609	Wear Ring
MODEL EX270, EX270LC							
ARM	9076106	50001-UP	P-UB-14	105 mm	150 mm	HIT-9078844	
BOOM	ALL	50001-UP	P-UB-10	95 mm	145 mm	HIT-9078843	
BUCKET	ALL	50001-UP	P-UB-10	95 mm	145 mm	HIT-9078843	
MODEL EX270-5, EX270LC-5, EX280H-5, EX280LCH-5							
ARM	9147237	10001-UP	P-UB-14	100 mm	145 mm	HIT-9180579	
	9147237	10001-UP		100 mm		HIT-4272963	Bushing
	9147237	10001-UP			145 mm	HIT-4194621	Wear Ring
	9147237	10001-UP			145 mm	HIT-4185247	Wear Ring
BOOM LH	9147236	10001-UP	P-UB-14	95 mm	135 mm	HIT-9180587	
	9147236	10001-UP		95 mm		HIT-4272962	Bushing
	9147236	10001-UP			135 mm	HIT-4185246	Wear Ring
	9147236	10001-UP			135 mm	HIT-4252191	Wear Ring
BOOM RH	9147235	10001-UP	P-UB-14	95 mm	135 mm	HIT-9180587	
	9147235	10001-UP		95 mm		HIT-4272962	Bushing
	9147235	10001-UP			135 mm	HIT-4185246	Wear Ring
	9147235	10001-UP			135 mm	HIT-4252191	Wear Ring
BUCKET	9147238	10001-UP	P-UB-14	90 mm	135 mm	HIT-9180580	
	9147238	10001-UP		90 mm		HIT-4272961	Bushing
	9147238	10001-UP			135 mm	HIT-4252191	Wear Ring
	9147238	10001-UP			135 mm	HIT-4185246	Wear Ring
MODEL EX300, EX300LC							
ARM			P-UB-10	110 mm	165 mm	HIT-9078846	
BOOM			P-UB-10	100 mm	145 mm	HIT-9078845	
BUCKET			P-UB-10	95 mm	145 mm	HIT-9078843	
MODEL EX300-3, EX300LC-3, EX300H-3, EX300LCH-3							
ARM	9122617		P-UB-14	110 mm	165 mm	HIT-9123264	

Hercules Bulldog and original equipment Hitachi kits may not include the necessary wear rings for your cylinder rebuild. Please ask your sales representative for a cross-reference if no complementary parts are listed.

Replacement Kits For

HITACHI

HITACHI

Excavators							
APPLICATION	CYL #	SERIAL #	CODE	ROD	BORE	KIT #	MISC
MODEL EX300-3, EX300LC-3, EX300H-3, EX300LCH-3							
ARM	9122617	7001-UP		110 mm		HIT-4284534	Bushing
	9122617	7001-UP			165 mm	HIT-4194624	Wear Ring
	9122617	7001-UP			165 mm	HIT-4194623	Wear Ring
BOOM LH	9122616	7001-UP	P-UB-10	100 mm	145 mm	HIT-9078845	
	9122616	7001-UP		100 mm		HIT-4272963	Bushing
	9122616	7001-UP			145 mm	HIT-4185247	Wear Ring
	9122616	7001-UP			145 mm	HIT-4185249	Wear Ring
BOOM RH	9122615	7001-UP	P-UB-10	100 mm	145 mm	HIT-9078845	
	9122615	7001-UP		100 mm		HIT-4272963	Bushing
	9122615	7001-UP			145 mm	HIT-4185247	Wear Ring
	9122615	7001-UP			145 mm	HIT-4185249	Wear Ring
BUCKET	9122618	7001-HL803556	P-UB-14	95 mm	145 mm	HIT-9123265	
	9122618	HL803557-UP	P-UB-14	95 mm	145 mm	HIT-9175564	
	9122618	7001-UP		95 mm		HIT-4284535	Bushing
	9122618	7001-UP			145 mm	HIT-4185247	Wear Ring
	9122618	7001-UP			145 mm	HIT-4185249	Wear Ring
BUCKET (River)	4326775	7001-UP	P-UB-10	65 mm	100 mm	HIT-4369767	
	4326775	7001-UP		65 mm		HIT-0310604	Bushing
	4326775	7001-UP			100 mm	HIT-0254908	Wear Ring
	4326775	7001-UP			100 mm	HIT-0326005	Wear Ring
MODEL EX300-5, EX330-5, EX350-5, EX370-5 (H,HD,K,&LC)							
ARM	9164990	20001-UP	P-UB-14	115 mm	170 mm	HIT-9180582	
	9164990	20001-UP		115 mm		HIT-4370337	Bushing
	9164990	20001-UP			170 mm	HIT-4370064	Wear Ring
	9164990	20001-UP			170 mm	HIT-4370063	Wear Ring
BOOM LH	9164872	20001-UP	P-UB-14	105 mm	150 mm	HIT-9180581	
	9164872	20001-UP		105 mm		HIT-4383093	Bushing
	9164872	20001-UP			150 mm	HIT-4194622	Wear Ring
	9164872	20001-UP			150 mm	HIT-4171490	Wear Ring
BOOM RH	9164874	20001-UP	P-UB-14	105 mm	150 mm	HIT-9180581	
	9164874	20001-UP		105 mm		HIT-4383093	Bushing
	9164874	20001-UP			150 mm	HIT-4194622	Wear Ring
	9164874	20001-UP			150 mm	HIT-4171490	Wear Ring
BUCKET	9164997	20001-UP	P-UB-14	95 mm	145 mm	HIT-9175564	
	9164997	20001-UP		95 mm		HIT-4284535	Bushing
	9164997	20001-UP			145 mm	HIT-4185247	Wear Ring
	9164997	20001-UP			145 mm	HIT-4185249	Wear Ring
MODEL EX400, EX400LC, EX400H, EX400LCH							
ARM	4206480	02001-UP	P-UB-10	130 mm	190 mm	HIT-4236058	
BOOM LH	4206479	02001-UP	P-UB-10	115 mm	170 mm	HIT-4236057	
BOOM RH	4206478	02001-UP	P-UB-10	115 mm	170 mm	HIT-4236057	
BUCKET	4206481	02001-UP	P-UB-10	115 mm	170 mm	HIT-4236057	
MODEL EX400-3, EX400LC-3, EX400H-3, EX400LCH-3							
ARM	4310243	5001-UP	P-UB-10	130 mm	190 mm	HIT-4438679	
	4310243	5001-UP		130 mm		HIT-0353004	Bushing
	4310243	5001-UP			190 mm	HIT-0242512	Wear Ring

Hercules Bulldog and original equipment Hitachi kits may not include the necessary wear rings for your cylinder rebuild. Please ask your sales representative for a cross-reference if no complementary parts are listed.

Replacement Kits For

HITACHI

HITACHI

Excavators							
APPLICATION	CYL #	SERIAL #	CODE	ROD	BORE	KIT #	MISC
MODEL EX400-3, EX400LC-3, EX400H-3, EX400LCH-3							
ARM	4310243	5001-UP			190 mm	HIT-0420307	Wear Ring
	4310243	5001-UP		130 mm		HIT-0417605	Wear Ring
ARM (Load Shvl)	4219778	5001-UP	P-UB-10	115 mm	170 mm	HIT-4236057	
	4219778	5001-UP		115 mm		HIT-0352704	Bushing
	4219778	5001-UP			170 mm	HIT-0352712	Wear Ring
	4219778	5001-UP			170 mm	HIT-0259307	Wear Ring
	4219778	5001-UP		115 mm		HIT-0352708	Wear Ring
BOOM LH	4310242	5001-UP	P-UB-10	115 mm	170 mm	HIT-4438672	
	4310242	5001-UP		115 mm		HIT-0352704	Bushing
	4310242	5001-UP			170 mm	HIT-0420109	Wear Ring
	4310242	5001-UP			170 mm	HIT-0259307	Wear Ring
	4310242	5001-UP		115 mm		HIT-0460004	Wear Ring
BOOM LH (Load Shvl)	4249749	5162, 5164	P-UB-10	115 mm	170 mm	HIT-4236057	
	4249749	5162, 5164		115 mm		HIT-0352704	Bushing
	4249749	5162, 5164			170 mm	HIT-0259307	Wear Ring
	4249749	5162, 5164			170 mm	HIT-0352712	Wear Ring
	4249749	5162, 5164		115 mm		HIT-0352708	Wear Ring
	4350424	5001-UP	P-UB-10	115 mm	170 mm	HIT-4438672	
	4350424	5001-UP		115 mm		HIT-0352704	Bushing
	4350424	5001-UP			170 mm	HIT-0259307	Wear Ring
	4350424	5001-UP			170 mm	HIT-0420109	Wear Ring
	4350424	5001-UP		115 mm		HIT-0460004	Wear Ring
BOOM RH	4310241	5001-UP	P-UB-10	115 mm	170 mm	HIT-4438672	
	4310241	5001-UP		115 mm		HIT-0352704	Bushing
	4310241	5001-UP			170 mm	HIT-0420109	Wear Ring
	4310241	5001-UP		115 mm		HIT-0460004	Wear Ring
	4310241	5001-UP			170 mm	HIT-0259307	Wear Ring
BOOM RH (Load Shvl)	4249748	5162, 5164	P-UB-10	115 mm	170 mm	HIT-4236057	
	4249748	5162, 5164		115 mm		HIT-0352704	Bushing
	4249748	5162, 5164			170 mm	HIT-0259307	Wear Ring
	4249748	5162, 5164		115 mm		HIT-0352708	Wear Ring
	4249748	5162, 5164			170 mm	HIT-0352712	Wear Ring
	4350423	5001-UP	P-UB-10	115 mm	170 mm	HIT-4438672	
	4350423	5001-UP		115 mm		HIT-0352704	Bushing
	4350423	5001-UP		115 mm		HIT-0460004	Wear Ring
	4350423	5001-UP			170 mm	HIT-0420109	Wear Ring
	4350423	5001-UP			170 mm	HIT-0259307	Wear Ring
BUCKET	4310244	5001-UP	P-UB-10	115 mm	170 mm	HIT-4438672	
	4310244	5001-UP		115 mm		HIT-0352704	Bushing
	4310244	5001-UP		115 mm		HIT-0460004	Wear Ring
	4310244	5001-UP			170 mm	HIT-0420109	Wear Ring
	4310244	5001-UP			170 mm	HIT-0259307	Wear Ring
	4390024	ALL	P-UB-10	120 mm	170 mm	HIT-4438681	
	4390024	ALL		120 mm		HIT-0450506	Bushing
	4390024	ALL			170 mm	HIT-0259307	Wear Ring

Hercules Bulldog and original equipment Hitachi kits may not include the necessary wear rings for your cylinder rebuild. Please ask your sales representative for a cross-reference if no complementary parts are listed.

Replacement Kits For

HITACHI

HITACHI

Excavators							
APPLICATION	CYL #	SERIAL #	CODE	ROD	BORE	KIT #	MISC
MODEL EX400-3, EX400LC-3, EX400H-3, EX400LCH-3							
BUCKET	4390024	ALL			170 mm	HIT-0420109	Wear Ring
	4390024	ALL		120 mm		HIT-0450508	Wear Ring
BUCKET (Long Arm)	9138785	5001-UP	P-UB-14	95 mm	145 mm	HIT-9123265	
	9138785	5001-UP		95 mm		HIT-4284535	Bushing
	9138785	5001-UP			145 mm	HIT-4185249	Wear Ring
	9138785	5001-UP			145 mm	HIT-4185247	Wear Ring
BUCKET LH (Load Shvl)	4219781	5001-UP	P-UB-10	115 mm	150 mm	HIT-4255532	
	4219781	5001-UP		115 mm		HIT-0352704	Bushing
	4219781	5001-UP		115 mm		HIT-0352708	Wear Ring
	4219781	5001-UP			150 mm	HIT-0237220	Wear Ring
	4219781	5001-UP			150 mm	HIT-0387305	Wear Ring
BUCKET RH (Load Shvl)	4219780	5001-UP	P-UB-10	115 mm	150 mm	HIT-4255532	
	4219780	5001-UP		115 mm		HIT-0352704	Bushing
	4219780	5001-UP		115 mm		HIT-0352708	Wear Ring
	4219780	5001-UP			150 mm	HIT-0237220	Wear Ring
	4219780	5001-UP			150 mm	HIT-0387305	Wear Ring
DUMP (Load Shvl)	4219782	5001-UP	P-UB-10	65 mm	100 mm	HIT-4255533	
	4219782	5001-UP		65 mm		HIT-0310604	Bushing
	4219782	5001-UP		65 mm		HIT-0387503	Wear Ring
	4219782	5001-UP			100 mm	HIT-0326005	Wear Ring
	4219782	5001-UP			100 mm	HIT-0254908	Wear Ring
LEVEL (Load Shvl)	4219779	5001-UP	P-UB-10	115 mm	170 mm	HIT-4236057	
	4219779	5001-UP		115 mm		HIT-0352704	Bushing
	4219779	5001-UP		115 mm		HIT-0352708	Wear Ring
	4219779	5001-UP			170 mm	HIT-0259307	Wear Ring
	4219779	5001-UP			170 mm	HIT-0352712	Wear Ring
LOADING SHOVEL	4344048	5001-UP	P-U-10	65 mm	130 mm	HIT-4363078	
	4344048	5001-UP		65 mm		HIT-0657704	Bushing
	4344048	5001-UP			130 mm	HIT-0657706	Wear Ring
MODEL EX400-3C, EX400LC-3C, EX450H-3C, EX450LCH-3C							
ARM	4310243	6001-UP	P-UB-10	130 mm	190 mm	HIT-4438679	
	4310243	6001-UP		130 mm		HIT-0353004	Bushing
	4310243	6001-UP		130 mm		HIT-0417605	Wear Ring
	4310243	6001-UP			190 mm	HIT-0420307	Wear Ring
	4310243	6001-UP			190 mm	HIT-0242512	Wear Ring
BOOM LH	4310242	6001-UP	P-UB-10	115 mm	170 mm	HIT-4438672	
	4310242	6001-UP		115 mm		HIT-0352704	Bushing
	4310242	6001-UP			170 mm	HIT-0420109	Wear Ring
	4310242	6001-UP			170 mm	HIT-0259307	Wear Ring
	4310242	6001-UP		115 mm		HIT-0460004	Wear Ring
BOOM RH	4310241	6001-UP	P-UB-10	115 mm	170 mm	HIT-4438672	
	4310241	6001-UP		115 mm		HIT-0352704	Bushing
	4310241	6001-UP			170 mm	HIT-0420109	Wear Ring
	4310241	6001-UP			170 mm	HIT-0259307	Wear Ring

Hercules Bulldog and original equipment Hitachi kits may not include the necessary wear rings for your cylinder rebuild. Please ask your sales representative for a cross-reference if no complementary parts are listed.

Replacement Kits For

HITACHI

HITACHI

Excavators							
APPLICATION	CYL #	SERIAL #	CODE	ROD	BORE	KIT #	MISC
MODEL EX400-3C, EX400LC-3C, EX450H-3C, EX450LCH-3C							
BOOM RH	4310241	6001-UP		115 mm		HIT-0460004	Wear Ring
BUCKET	4310244	6001-UP	P-UB-10	115 mm	170 mm	HIT-4438672	
	4310244	6001-UP		115 mm		HIT-0352704	Bushing
	4310244	6001-UP			170 mm	HIT-0259307	Wear Ring
	4310244	6001-UP			170 mm	HIT-0420109	Wear Ring
	4310244	6001-UP		115 mm		HIT-0460004	Wear Ring
BUCKET (Long Arm)	9138785	6001-UP	P-UB-14	95 mm	145 mm	HIT-9123265	
	9138785	6001-UP		95 mm		HIT-4284535	Bushing
	9138785	6001-UP			145 mm	HIT-4185247	Wear Ring
	9138785	6001-UP			145 mm	HIT-4185249	Wear Ring
LOADING SHOVEL	4344048	6001-UP	P-U-10	65 mm	130 mm	HIT-4363078	
	4344048	6001-UP		65 mm		HIT-0657704	Bushing
	4344048	6001-UP			130 mm	HIT-0657706	Wear Ring
MODEL EX400-5, EX400LC-5, EX450LC-5, EX450LCH-5							
ARM	4310243	7001-UP	P-UB-10	130 mm	190 mm	HIT-4438679	
	4310243	7001-UP		130 mm		HIT-0353004	Bushing
	4310243	7001-UP			190 mm	HIT-0420307	Wear Ring
	4310243	7001-UP		130 mm		HIT-0417605	Wear Ring
	4310243	7001-UP			190 mm	HIT-0242512	Wear Ring
BOOM LH	4310242	7001-UP	P-UB-10	115 mm	170 mm	HIT-4438672	
	4310242	7001-UP		115 mm		HIT-0352704	Bushing
	4310242	7001-UP			170 mm	HIT-0420109	Wear Ring
	4310242	7001-UP			170 mm	HIT-0259307	Wear Ring
	4310242	7001-UP		115 mm		HIT-0460004	Wear Ring
BOOM RH	4310241	7001-UP	P-UB-10	115 mm	170 mm	HIT-4438672	
	4310241	7001-UP		115 mm		HIT-0352704	Bushing
	4310241	7001-UP			170 mm	HIT-0259307	Wear Ring
	4310241	7001-UP			170 mm	HIT-0420109	Wear Ring
	4310241	7001-UP		115 mm		HIT-0460004	Wear Ring
BUCKET	4310244		P-UB-10	115 mm	170 mm	HIT-4438672	
	4310244			115 mm		HIT-0352704	Bushing
	4310244			115 mm		HIT-0460004	Wear Ring
	4310244				170 mm	HIT-0259307	Wear Ring
	4310244				170 mm	HIT-0420109	Wear Ring
	4390024		P-UB-10	120 mm	170 mm	HIT-4438681	
	4390024			120 mm		HIT-0450506	Bushing
	4390024			120 mm		HIT-0450508	Wear Ring
	4390024				170 mm	HIT-0420109	Wear Ring
	4390024				170 mm	HIT-0259307	Wear Ring
BUCKET (Long Arm)	9138785	7001-UP	P-UB-14	95 mm	145 mm	HIT-9123265	
	9138785	7001-UP		95 mm		HIT-4284535	Bushing
	9138785	7001-UP			145 mm	HIT-4185249	Wear Ring
	9138785	7001-UP			145 mm	HIT-4185247	Wear Ring
LOADING SHOVEL	4344048	7001-UP	P-U-10	65 mm	130 mm	HIT-4363078	
	4344048	7001-UP		65 mm		HIT-0657704	Bushing
	4344048	7001-UP			130 mm	HIT-0657706	Wear Ring

Hercules Bulldog and original equipment Hitachi kits may not include the necessary wear rings for your cylinder rebuild. Please ask your sales representative for a cross-reference if no complementary parts are listed.

Replacement Kits For

HITACHI

HITACHI

Excavators							
APPLICATION	CYL #	SERIAL #	CODE	ROD	BORE	KIT #	MISC
MODEL EX700, EX700H							
ARM	4218518	01003-UP	P-UB-10	150 mm	215 mm	HIT-4254042	
	4253060	6/89-UP	P-UB-10	150 mm	215 mm	HIT-4266596	
BOOM	4218516	01003-UP	P-UB-10	140 mm	200 mm	HIT-4254041	
	4218517	01003-UP	P-UB-10	140 mm	200 mm	HIT-4254041	
BUCKET	4251780	01003-UP	P-UB-10	130 mm	190 mm	HIT-4256119	
	4253061	6/89-UP	P-UB-10	150 mm	215 mm	HIT-4266596	
MODEL EX1000							
ARM	4157138	101-UP	P-U-10	150 mm	225 mm	HIT-4163898	
	4157138	101-UP	P-UB-10	150 mm	225 mm	HIT-4171991	
BOOM	4157139	101-UP	P-U-10	160 mm	240 mm	HIT-4163899	
	4157139	101-UP	P-UB-10	160 mm	240 mm	HIT-4171990	
BUCKET	4174020	101-UP	P-UB-10	160 mm	240 mm	HIT-4171990	
	4193517	101-UP	P-UB-10	160 mm	240 mm	HIT-4171990	
DUMP	4157143	101-UP	P-UB-10	80 mm	140 mm	HIT-4171993	
	4157143	101-UP	P-U-10	80 mm	140 mm	HIT-4163901	
LEVEL	4157142	101-UP	P-U-10	160 mm	240 mm	HIT-4163899	
	4157142	101-UP	P-UB-10	160 mm	240 mm	HIT-4171990	
TILT	4157140	101-UP	P-U-10	140 mm	190 mm	HIT-4163900	
	4157140	101-UP	P-UB-10	140 mm	190 mm	HIT-4171992	
MODEL EX1800							
DUMP	4248484		P-UB-10	110 mm	190 mm	HIT-4221872	
MODEL EX3500							
DUMP			P-UB-10	130 mm	225 mm	HIT-4210676	
MODEL UH07-3							
ARM			P-UB-5	85 mm	125 mm	HIT-4094458	
BOOM			P-UB-5	85 mm	125 mm	HIT-4094457	
BUCKET			I-U-5	70 mm	125 mm	HIT-4071694	
MODEL UH07-5							
ARM			P-UB-5	90 mm	130 mm	HIT-4104127	
BOOM			P-UB-5	85 mm	125 mm	HIT-4117741	
BUCKET			P-UB-5	75 mm	125 mm	HIT-4117743	
MODEL UH07-7							
ARM			P-UB-10	100 mm	140 mm	HIT-4153211	
BOOM			P-UB-10	90 mm	130 mm	HIT-4153209	
BUCKET			P-UB-10	80 mm	125 mm	HIT-4153213	
MODEL UH009							
ARM			I-U-5	95 mm	150 mm	HIT-4064636	
BOOM			I-U-5	90 mm	150 mm	HIT-4064635	
BUCKET			I-U-5	90 mm	150 mm	HIT-4064635	
MODEL UH010							
ARM			P-UB-5	105 mm	150 mm	HIT-4096959	
BOOM			P-UB-5	95 mm	150 mm	HIT-4096957	
BUCKET			P-UB-5	95 mm	150 mm	HIT-4096960	
MODEL UH012							
ARM			P-U-5	110 mm	180 mm	HIT-4509364	
BOOM			P-U-5	110 mm	180 mm	HIT-4509364	

Hercules Bulldog and original equipment Hitachi kits may not include the necessary wear rings for your cylinder rebuild. Please ask your sales representative for a cross-reference if no complementary parts are listed.

Replacement Kits For

HITACHI

HITACHI

Excavators							
APPLICATION	CYL #	SERIAL #	CODE	ROD	BORE	KIT #	MISC
MODEL UH012							
BUCKET			P-U-5	120 mm	180 mm	HIT-4509365	
MODEL UH016							
ARM	3022991	005-009;053-069	P-UB-5	110 mm	170 mm	HIT-4153235	
	3027628	001-165	P-UB-5	120 mm	190 mm	HIT-4162027	
	3031888	166-UP	P-UB-10	120 mm	190 mm	HIT-4176980	
	4167618	001-004;010-052;070-UP	P-UB-10	110 mm	170 mm	HIT-4167722	
BOOM LH	3026175		P-UB-5	110 mm	170 mm	HIT-4162026	Old Style
	4167617		P-UB-10	110 mm	170 mm	HIT-4167721	New Style
BOOM RH	3026114		P-UB-5	110 mm	170 mm	HIT-4162026	Old Style
	4167616		P-UB-10	110 mm	170 mm	HIT-4167721	New Style
BUCKET	3026115	001-145	P-UB-5	110 mm	170 mm	HIT-4162028	
	3027022	001-UP	P-UB-5	95 mm	150 mm	HIT-4150681	
	3031889	146-UP	P-UB-10	110 mm	170 mm	HIT-4167721	
DUMP	3024187	001-UP	P-UB-5	55 mm	100 mm	HIT-4144635	
LEVEL	3025213	001-UP	P-UB-5	110 mm	170 mm	HIT-4153237	
MODEL UH035							
ARM	4157138	002-UP	P-U-10	150 mm	225 mm	HIT-4163898	
BOOM	4157139	002-UP	P-U-10	160 mm	240 mm	HIT-4163899	
DUMP	4157143	002-UP	P-U-10	80 mm	140 mm	HIT-4163901	
LEVEL	4157142	002-UP	P-U-10	160 mm	240 mm	HIT-4163899	
TILT LH	4157141	002-UP	P-U-10	140 mm	190 mm	HIT-4163900	
TILT RH	4157140	002-UP	P-U-10	140 mm	190 mm	HIT-4163900	
MODEL UH045, UH061							
ARM			I-U-5	80 mm	130 mm	HIT-4101443	
BOOM			I-U-5	70 mm	120 mm	HIT-4101442	
BUCKET			I-U-5	70 mm	120 mm	HIT-4101442	
MODEL UH083, UH083LC							
ARM	4132364	20051-UP	P-UB-5	100 mm	140 mm	HIT-4153205	
	4132364	20001-20010	P-UB-5	100 mm	140 mm	HIT-4153205	
	4153281	20011-20050	P-UB-10	100 mm	140 mm	HIT-4153211	
BOOM LH	4128103	20001-20010	P-UB-5	85 mm	125 mm	HIT-4153203	
	4153280	20011-20050	P-UB-10	90 mm	130 mm	HIT-4153209	
	4153312	20051-UP	P-UB-5	85 mm	125 mm	HIT-4153203	
BOOM RH	4128102	20001-20010	P-UB-5	85 mm	125 mm	HIT-4153203	
	4153279	20011-20050	P-UB-10	90 mm	130 mm	HIT-4153209	
	4153311	20051-UP	P-UB-5	85 mm	125 mm	HIT-4153203	
BUCKET	4128105	20051-UP	P-UB-5	80 mm	125 mm	HIT-4153207	
	4128105	20001-20010	P-UB-5	80 mm	125 mm	HIT-4153207	
	4153282	20011-20050	P-UB-10	80 mm	125 mm	HIT-4153213	
MODEL UH107							
ARM			P-UB-5	105 mm	150 mm	HIT-4096959	
BOOM			P-UB-5	95 mm	150 mm	HIT-4096957	
BUCKET			P-UB-5	95 mm	150 mm	HIT-4096960	
MODEL UH122, UH122LC							
ARM	3011918	125	P-UB-5	105 mm	150 mm	HIT-4096958	

Hercules Bulldog and original equipment Hitachi kits may not include the necessary wear rings for your cylinder rebuild. Please ask your sales representative for a cross-reference if no complementary parts are listed.

Replacement Kits For

HITACHI

HITACHI

Excavators							
APPLICATION	CYL #	SERIAL #	CODE	ROD	BORE	KIT #	MISC
MODEL UH122, UH122LC							
ARM	3015873	351-605	P-UB-5	105 mm	150 mm	HIT-4096959	
	3019398	835-UP	P-UB-5	105 mm	150 mm	HIT-4122040	
	3020009	606-834	P-UB-5	105 mm	150 mm	HIT-4117746	
BOOM LH	3010528	125-605	P-UB-5	95 mm	150 mm	HIT-4096957	
	3020012	606-835	P-UB-5	95 mm	150 mm	HIT-4117745	
	3020973	836-UP	P-UB-5	95 mm	150 mm	HIT-4122039	
BOOM RH	3010527	125-605	P-UB-5	95 mm	150 mm	HIT-4096957	
	3020011	606-835	P-UB-5	95 mm	150 mm	HIT-4117745	
	3020972	836-UP	P-UB-5	95 mm	150 mm	HIT-4122039	
BUCKET	3010530	125-UP	P-UB-5	95 mm	150 mm	HIT-4096960	
MODEL UH123							
ARM	4170628	3001-UP	P-UB-10	105 mm	150 mm	HIT-4163569	
BOOM LH	4170627	3001-UP	P-UB-10	95 mm	150 mm	HIT-4179470	
BOOM RH	4173626	3001-UP	P-UB-10	95 mm	150 mm	HIT-4179470	
BUCKET	4170629	3001-UP	P-UB-10	95 mm	150 mm	HIT-4163573	
MODEL UH172							
ARM	3015411	601-UP	P-UB-5	120 mm	190 mm	HIT-4101392	
BOOM LH	3014038		P-UB-5	110 mm	170 mm	HIT-4094852	
BOOM RH	3013801		P-UB-5	110 mm	170 mm	HIT-4094852	
BUCKET	3014042	001-UP	P-UB-5	110 mm	170 mm	HIT-4094852	
MODEL UH181							
ARM	3022991	005-009;053-069	P-UB-5	110 mm	170 mm	HIT-4153235	
	3027628	001-165	P-UB-5	120 mm	190 mm	HIT-4162027	
	3031888	166-UP	P-UB-10	120 mm	190 mm	HIT-4176980	
	4167618	001-004;010-052	P-UB-10	110 mm	170 mm	HIT-4167722	
	4167618	070-UP	P-UB-10	110 mm	170 mm	HIT-4167722	
BOOM LH	3026175		P-UB-5	110 mm	170 mm	HIT-4162026	
	4167617		P-UB-10	110 mm	170 mm	HIT-4167721	
BOOM RH	3026114		P-UB-5	110 mm	170 mm	HIT-4162026	
	4167616		P-UB-10	110 mm	170 mm	HIT-4167721	
BUCKET	3026115	001-145	P-UB-5	110 mm	170 mm	HIT-4162028	
	3027022	001-UP	P-UB-5	95 mm	150 mm	HIT-4150681	
	3031889	146-UP	P-UB-10	110 mm	170 mm	HIT-4167721	
DUMP	3024187	001-UP	P-UB-5	55 mm	100 mm	HIT-4144635	
LEVEL	3025213	001-UP	P-UB-5	110 mm	170 mm	HIT-4153237	
TILT	3022992	005-009;053-069	P-UB-5	110 mm	150 mm	HIT-4153236	
	4167620	001-004;010-052;070-UP	P-UB-10	110 mm	140 mm	HIT-4167724	
MODEL UH501							
ARM	4157138	002-UP	P-U-10	150 mm	225 mm	HIT-4163898	
BOOM	4157139	002-UP	P-U-10	160 mm	240 mm	HIT-4163899	
DUMP	4157143	002-UP	P-U-10	80 mm	140 mm	HIT-4163901	
LEVEL	4157142	002-UP	P-U-10	160 mm	240 mm	HIT-4163899	
TILT LH	4157141	002-UP	P-U-10	140 mm	190 mm	HIT-4163900	
TILT RH	4157140	002-UP	P-U-10	140 mm	190 mm	HIT-4163900	

Hercules Bulldog and original equipment Hitachi kits may not include the necessary wear rings for your cylinder rebuild. Please ask your sales representative for a cross-reference if no complementary parts are listed.

REPLACEMENT KITS FOR HITACHI

Part Number	Code (Pg. x)	Rod X Bore Size	
HIT-4064635	I-U-5	90 X 150	
HIT-4064636	I-U-5	95 X 150	
HIT-4071694	I-U-5	70 X 125	
HIT-4094457	P-UB-5	85 X 125	
HIT-4094458	P-UB-5	85 X 125	
HIT-4094852	P-UB-5	110 X 170	
HIT-4096957	P-UB-5	95 X 150	
HIT-4096958	P-UB-5	105 X 150	
HIT-4096959	P-UB-5	105 X 150	
HIT-4096960	P-UB-5	95 X 150	
HIT-4101392	P-UB-5	120 X 190	
HIT-4101442	I-U-5	70 X 120	
HIT-4101443	I-U-5	80 X 130	
HIT-4104127	P-UB-5	90 X 130	
HIT-4117741	P-UB-5	85 X 125	
HIT-4117743	P-UB-5	75 X 125	
HIT-4117745	P-UB-5	95 X 150	
HIT-4117746	P-UB-5	105 X 150	
HIT-4122039	P-UB-5	95 X 150	
HIT-4122040	P-UB-5	105 X 150	
HIT-4124367	P-UB-5	140 X 200	
HIT-4125182	P-UB-5	95 X 150	
HIT-4125183	P-UB-5	105 X 150	
HIT-4144635	P-UB-5	55 X 100	
HIT-4150681	P-UB-5	95 X 150	
HIT-4153203	P-UB-5	85 X 125	
HIT-4153205	P-UB-5	100 X 140	
HIT-4153207	P-UB-5	80 X 125	
HIT-4153209	P-UB-10	90 X 130	
HIT-4153211	P-UB-10	100 X 140	
HIT-4153213	P-UB-10	80 X 125	
HIT-4153235	P-UB-5	110 X 170	
HIT-4153236	P-UB-5	110 X 150	
HIT-4153237	P-UB-5	110 X 170	
HIT-4162026	P-UB-5	110 X 170	
HIT-4162027	P-UB-5	120 X 190	
HIT-4162028	P-UB-5	110 X 170	
HIT-4163569	P-UB-10	105 X 150	
HIT-4163573	P-UB-10	95 X 150	
HIT-4163898	P-U-10	150 X 225	
HIT-4163899	P-U-10	160 X 240	
HIT-4163900	P-U-10	140 X 190	
HIT-4163901	P-U-10	80 X 140	
HIT-4167721	P-UB-10	110 X 170	
HIT-4167722	P-UB-10	110 X 170	
HIT-4167724	P-UB-10	110 X 140	
HIT-4171990	P-UB-10	160 X 240	
HIT-4171991	P-UB-10	150 X 225	
HIT-4171992	P-UB-10	140 X 190	
HIT-4171993	P-UB-10	80 X 140	

Part Number	Code (Pg. x)	Rod X Bore Size	
HIT-4176980	P-UB-10	120 X 190	
HIT-4179470	P-UB-10	95 X 150	
HIT-4203830	P-UB-14	90 X 135	
HIT-4203831	P-UB-10	100 X 145	
HIT-4206018	P-UB-10	85 X 125	
HIT-4206019	P-UB-10	95 X 135	
HIT-4206020	P-UB-10	80 X 120	
HIT-4206340	P-UB-10	70 X 95	
HIT-4206343	P-UB-10	75 X 105	
HIT-4206344	P-UB-10	80 X 115	
HIT-4206345	P-UB-10	65 X 95	
HIT-4210676	P-UB-10	130 X 225	
HIT-4214722	P-UB-10	85 X 135	
HIT-4216264P	P-UB-10	85 X 120	
HIT-4221872	P-UB-10	110 X 190	
HIT-4223636	P-UB-10	35 X 65	
HIT-4236057	P-UB-10	115 X 170	
HIT-4236058	P-UB-10	130 X 190	
HIT-4254041	P-UB-10	140 X 200	
HIT-4254042	P-UB-10	150 X 215	
HIT-4255532	P-UB-10	115 X 150	
HIT-4255533	P-UB-10	65 X 100	
HIT-4256119	P-UB-10	130 X 190	
HIT-4266596	P-UB-10	150 X 215	
HIT-4286459	P-UB-10	70 X 105	
HIT-4286463	P-UB-10	80 X 110	
HIT-4286739	P-UB-10	65 X 95	
HIT-4286774	P-UB-10	85 X 120	
HIT-4286780	P-UB-10	95 X 130	
HIT-4286784	P-UB-10	75 X 110	
HIT-4320954	P-UB-10	95 X 150	
HIT-4340620	P-UB-10	115 X 170	
HIT-4340621	P-UB-10	130 X 190	
HIT-4363078	P-U-10	65 X 130	
HIT-4364915	P-UB-10	85 X 120	
HIT-4364916	P-UB-10	95 X 130	
HIT-4369766	P-UB-10	65 X 95	
HIT-4369767	P-UB-10	65 X 100	
HIT-4369890	P-UB-10	75 X 110	
HIT-4369893P	P-UB-10	80 X 115	
HIT-4369901	P-UB-10	85 X 120	
HIT-4369902	P-UB-10	85 X 125	
HIT-4369914	P-UB-10	95 X 130	
HIT-4369943	P-UB-10	105 X 145	
HIT-4389719	P-UB-10	80 X 110	
HIT-4389720	P-UB-10	85 X 115	
HIT-4389721	P-UB-10	75 X 105	
HIT-4438672	P-UB-10	115 X 170	
HIT-4438679	P-UB-10	130 X 190	
HIT-4438681	P-UB-10	120 X 170	

REPLACEMENT KITS FOR HITACHI

Part Number	Code (Pg. x)	Rod X Bore Size	
HIT-4438758	P-UB-10	115 X 170	
HIT-4509364	P-U-5	110 X 180	
HIT-4509365	P-U-5	120 X 180	
HIT-9078843	P-UB-10	95 X 145	
HIT-9078844	P-UB-14	105 X 150	
HIT-9078845	P-UB-10	100 X 145	
HIT-9078846	P-UB-10	110 X 165	
HIT-9103842	P-UB-10	90 X 125	
HIT-9103843	P-UB-14	100 X 135	
HIT-9103844	P-UB-10	85 X 125	
HIT-9123264	P-UB-14	110 X 165	
HIT-9123265	P-UB-14	95 X 145	
HIT-9156441	P-UB-14	100 X 135	
HIT-9175562	P-UB-14	100 X 145	
HIT-9175563	P-UB-14	110 X 165	
HIT-9175564	P-UB-14	95 X 145	
HIT-9178283	P-UB-14	90 X 125	
HIT-9178284	P-UB-14	100 X 135	
HIT-9178294	P-UB-14	85 X 125	
HIT-9180579	P-UB-14	100 X 145	
HIT-9180580	P-UB-14	90 X 135	
HIT-9180581	P-UB-14	105 X 150	
HIT-9180582	P-UB-14	115 X 170	
HIT-9180587	P-UB-14	95 X 135	

WIPERS

Part Number	Rod Diameter	
HIT-4094867	55 mm	
HIT-225610	65 mm	
HIT-271308	70 mm	
HIT-4036973	70 mm	
HIT-240910	72 mm	
HIT-4103699	75 mm	
HIT-208607	80 mm	
HIT-128607	85 mm	
HIT-208307	85 mm	
HIT-4039669	90 mm	
HIT-4124849	90 mm	
HIT-127208	95 mm	
HIT-146409	95 mm	
HIT-236920	95 mm	
HIT-309206	95 mm	
HIT-4039686	95 mm	
HIT-4171482	95 mm	
HIT-208507	100 mm	
HIT-4074008	100 mm	
HIT-4131730	100 mm	

WIPERS

Part Number	Rod Diameter	
HIT-808507	100 mm	
HIT-127409	105 mm	
HIT-237216	105 mm	
HIT-4171483	105 mm	
HIT-237310	110 mm	
HIT-4505063	110 mm	
HIT-352709	115 mm	
HIT-4505954	120 mm	
HIT-257006	130 mm	
HIT-242506	140 mm	
HIT-242707	150 mm	
HIT-242306	160 mm	

ROD U-SEALS

Part Number	Rod Diameter	
HIT-4070039	55 mm	
HIT-225611	65 mm	
HIT-271309	70 mm	
HIT-4508829	70 mm	
HIT-127710	75 mm	
HIT-240911	75 mm	
HIT-208605	80 mm	
HIT-128606	85 mm	
HIT-208305	85 mm	
HIT-4039668	90 mm	
HIT-4094890	90 mm	
HIT-4168226	90 mm	
HIT-127207	95 mm	
HIT-146407	95 mm	
HIT-4034640	95 mm	
HIT-4171484	95 mm	
HIT-4070021	100 mm	
HIT-4168227	100 mm	
HIT-127408	105 mm	
HIT-4069701	110 mm	
HIT-4505060	110 mm	
HIT-352706	115 mm	
HIT-4069711	120 mm	
HIT-4505951	120 mm	
HIT-191405	130 mm	
HIT-4094949	140 mm	
HIT-4070027	150 mm	
HIT-4105385	160 mm	

REPLACEMENT PARTS FOR HITACHI

NOTE: Hitachi part numbers are used as a reference only. We do not imply that these kits are original REPLACEMENT PARTS.

BUFFER RINGS

Part Number	Rod Diameter	
HIT-201003	55 mm	
HIT-187305	60 mm	
HIT-225613	65 mm	
HIT-409104	65 mm	
HIT-271311	70 mm	
HIT-408804	70 mm	
HIT-158102	75 mm	
HIT-240913	75 mm	
HIT-409605	75 mm	
HIT-174506	80 mm	
HIT-309305	80 mm	
HIT-409004	80 mm	
HIT-128603	85 mm	
HIT-157801	85 mm	
HIT-309005	85 mm	
HIT-4108704	90 mm	
HIT-4253560	90 mm	
HIT-127205	95 mm	
HIT-127221	95 mm	
HIT-151902	95 mm	
HIT-309205	95 mm	
HIT-4171486	95 mm	
HIT-208505	100 mm	
HIT-4131728	100 mm	
HIT-127407	105 mm	
HIT-127419	105 mm	
HIT-151703	105 mm	
HIT-4171487	105 mm	
HIT-165702	110 mm	
HIT-336805	110 mm	
HIT-4094814	110 mm	
HIT-165903	120 mm	
HIT-4094836	120 mm	
HIT-353005	130 mm	
HIT-380004	130 mm	
HIT-187705	140 mm	
HIT-379807	140 mm	
HIT-242705	150 mm	
HIT-292303	150 mm	
HIT-379906	150 mm	
HIT-336605	170 mm	

PISTON SEALS

Part Number	Bore Diameter	
HIT-310608	95 mm	
HIT-201006	100 mm	
HIT-240915	110 mm	
HIT-258205	120 mm	
HIT-128611	125 mm	
HIT-223706	125 mm	
HIT-4092193	125 mm	
HIT-4124860	125 mm	
HIT-4085439	130 mm	
HIT-309210	135 mm	
HIT-133505	140 mm	
HIT-224106	140 mm	
HIT-4185245	145 mm	
HIT-127210	150 mm	
HIT-127412	150 mm	
HIT-187405	150 mm	
HIT-237218	150 mm	
HIT-4128769	150 mm	
HIT-4171492	150 mm	
HIT-165703	170 mm	
HIT-4094809	170 mm	
HIT-4170547	170 mm	
HIT-105707	190 mm	
HIT-161603	190 mm	
HIT-242510	190 mm	
HIT-380006	190 mm	
HIT-379811	200 mm	
HIT-379911	215 mm	
HIT-392305	215 mm	
HIT-242712	225 mm	
HIT-242310	240 mm	

WEAR RINGS

Part Number	OD X Width	
HIT-0387503	70 X 9.5 mm	
HIT-0310609	95 X 6 mm	
HIT-0310610	95 X 6 mm	
HIT-0254908	100 X 5.9 mm	
HIT-0326005	100 X 6 mm	
HIT-0310510	105 X 6 mm	
HIT-0666808	105 X 6 mm	
HIT-0298907	110 X 5.9 mm	
HIT-0410005	110 X 7.9 mm	
HIT-0667008	110 X 7.9 mm	
HIT-410005	110 X 7.9 mm	
HIT-0352708	115 X 14.8 mm	
HIT-0310908	115 X 6 mm	
HIT-0686405	115 X 7.9 mm	
HIT-0450508	120 X 14.8 mm	
HIT-0460004	120 X 15 mm	
HIT-0667206	120 X 7.9 mm	
HIT-309309	120 X 7.9 mm	
HIT-0261308	120 X 8 mm	
HIT-261308	120 X 8 mm	
HIT-0309009	125 X 7.9 mm	
HIT-0309309	125 X 7.9 mm	
HIT-309009	125 X 7.9 mm	
HIT-0223713	125 X 8 mm	
HIT-4168234	125 X 9.7 mm	
HIT-4253562	125 X 9.9 mm	
HIT-0657706	130 X 11.6 mm	
HIT-0417605	130 X 14.8 mm	
HIT-0409912	130 X 7.9 mm	
HIT-0667409	130 X 7.9 mm	
HIT-223707	130 X 7.9 mm	
HIT-0254309	130 X 8 mm	
HIT-223713	130 X 8 mm	
HIT-4185246	135 X 9.7 mm	
HIT-4185248	135 X 14.8 mm	
HIT-309211	135 X 7.9 mm	
HIT-309212	135 X 8 mm	
HIT-4252191	135 X 9.8 mm	
HIT-224107	140 X 7.9 mm	
HIT-224108	140 X 8 mm	
HIT-4185249	145 X 14.8 mm	

REPLACEMENT PARTS FOR HITACHI

NOTE: Hitachi part numbers are used as a reference only. We do not imply that these kits are original REPLACEMENT PARTS.

WEAR RINGS

Part Number	OD X Width	
HIT-4194621	145 X 14.8 mm	
HIT-0373413	145 X 7.9 mm	
HIT-0492209	145 X 9.5 mm	
HIT-4185247	145 X 9.7 mm	
HIT-4194622	150 X 14.8 mm	
HIT-0237220	150 X 8 mm	
HIT-237220	150 X 8 mm	
HIT-0387305	150 X 9.5 mm	
HIT-237219	150 X 9.5 mm	
HIT-4171490	150 X 9.7 mm	
HIT-0352712	160 X 9.5 mm	
HIT-4194623	165 X 15 mm	
HIT-4194624	165 X 9.7 mm	
HIT-4370064	170 X 14.8 mm	
HIT-0420109	170 X 9.5 mm	
HIT-259306	170 X 9.5 mm	
HIT-352712	170 X 9.5 mm	
HIT-0259307	170 X 9.7 mm	
HIT-259307	170 X 9.7 mm	
HIT-4370063	170 X 9.7 mm	
HIT-0420307	190 X 14.8 mm	
HIT-242511	190 X 15 mm	
HIT-336808	190 X 15 mm	
HIT-0242512	190 X 9.7 mm	
HIT-242512	190 X 9.7 mm	

ROD BUSHINGS

Part Number	Rod Diameter	
HIT-0310604	65 mm	
HIT-0657704	65 mm	
HIT-0310504	75 mm	
HIT-0309304	80 mm	
HIT-4272960	85 mm	
HIT-4272961	90 mm	
HIT-0309204	95 mm	
HIT-4171488	95 mm	
HIT-4272962	95 mm	
HIT-4284535	95 mm	
HIT-4272963	100 mm	
HIT-0373405	105 mm	
HIT-4383093	105 mm	
HIT-336804	110 mm	
HIT-4284534	110 mm	
HIT-0352704	115 mm	
HIT-4370337	115 mm	
HIT-0450506	120 mm	
HIT-0353004	130 mm	
HIT-317404	130 mm	

O-RINGS

Part Number	Min Pkg Qty	
HIT-127216	2	
HIT-127218	3	
HIT-127414	5	
HIT-127417	2	
HIT-128605	3	
HIT-128609	3	
HIT-128610	6	
HIT-128612	3	
HIT-136004	3	
HIT-146423	10	
HIT-148310	1	
HIT-150609	1	
HIT-166010	3	
HIT-186206	2	
HIT-208509	2	
HIT-808509	1	
HIT-939306	10	
HIT-954488	3	
HIT-955612	10	
HIT-984614	10	
HIT-985098	10	
HIT-1486206	2	
HIT-4007528	1	
HIT-4007535	1	
HIT-4031027	2	
HIT-4033451	2	
HIT-4033751	2	
HIT-4034653	2	
HIT-4034654	2	
HIT-4034655	1	
HIT-4034656	2	
HIT-4034657	5	
HIT-4034658	10	
HIT-4035039	2	
HIT-4037888	10	
HIT-4038304	2	
HIT-4039611	1	
HIT-4039657	2	
HIT-4039659	1	
HIT-4039678	2	

REPLACEMENT PARTS FOR HITACHI

NOTE: Hitachi part numbers are used as a reference only. We do not imply that these kits are original REPLACEMENT PARTS.

O-RINGS

Part Number	Min Pkg Qty	
HIT-4039679	2	
HIT-4040565	3	
HIT-4046608	2	
HIT-4049492	3	
HIT-4049494	2	
HIT-4049565	3	
HIT-4049568	2	
HIT-4068626	2	
HIT-4068628	4	
HIT-4068632	2	
HIT-4068682	2	
HIT-4070046	3	
HIT-4070049	10	
HIT-4087852	2	
HIT-4094815	1	
HIT-4094908	15	
HIT-4095999	3	
HIT-4101722	3	
HIT-4103701	3	
HIT-4104498	15	
HIT-4105424	18	
HIT-4113165	1	
HIT-4123447	3	
HIT-4138931	18	
HIT-4140487	1	
HIT-4140491	1	
HIT-4253563	2	
HIT-4505080	1	
HIT-4505082	1	
HIT-A810025	15	
HIT-A810085	4	
HIT-A810125	3	
HIT-A810130	3	
HIT-A810155	2	
HIT-A810165	2	
HIT-A810170	2	

O-RING 90 DUROMETER

Part Number	Min Pkg Qty	
HIT-317406	1	
HIT-317717	1	
HIT-4007534	1	
HIT-4104135	3	
HIT-4123441	1	
HIT-4203611	3	
HIT-4506405	30	
HIT-4506408	25	
HIT-4506424	1	
HIT-4506428	12	
HIT-4506430	12	
HIT-A811025	1	
HIT-A811030	12	
HIT-A811035	10	
HIT-A811040	10	
HIT-A811045	10	
HIT-A811050	8	
HIT-A811070	5	
HIT-A811075	4	
HIT-A811080	4	
HIT-A811085	3	
HIT-A811090	3	
HIT-A811100	3	
HIT-A811105	3	
HIT-A811110	3	
HIT-A811115	3	
HIT-A811120	3	
HIT-A811125	3	
HIT-A811130	2	
HIT-A811135	2	
HIT-A811140	2	
HIT-A811145	2	
HIT-A811150	1	
HIT-A811160	2	
HIT-A811180	1	
HIT-A811190	1	
HIT-A812180	1	

BACK-UP RINGS

Part Number	Min Pkg Qty	
HIT-133704	1	
HIT-133707	1	
HIT-136006	1	
HIT-146416	1	
HIT-150610	1	
HIT-166009	1	
HIT-167721	1	
HIT-208306	1	
HIT-208308	1	
HIT-208508	1	
HIT-208522	1	
HIT-208606	1	
HIT-219405	1	
HIT-223704	1	
HIT-225612	1	
HIT-236919	1	
HIT-237215	1	
HIT-237217	1	
HIT-237309	1	
HIT-239506	1	
HIT-240912	1	
HIT-242307	1	
HIT-242507	1	
HIT-242708	1	
HIT-257007	1	
HIT-257510	1	
HIT-261310	1	
HIT-262403	1	
HIT-271310	1	
HIT-298904	1	
HIT-309207	1	
HIT-310506	1	
HIT-310606	1	
HIT-317710	1	
HIT-317718	1	
HIT-336610	1	
HIT-379908	1	
HIT-403347	1	
HIT-487862	1	
HIT-1660019	1	

HITACHI

BACK-UP RINGS

Part Number	Min Pkg Qty	
HIT-4007510	1	
HIT-4033747	1	
HIT-4034645	1	
HIT-4034646	1	
HIT-4034647	1	
HIT-4035029	1	
HIT-4035030	1	
HIT-4039658	1	
HIT-4039660	1	
HIT-4061803	1	
HIT-4061827	1	
HIT-4067085	1	
HIT-4067140	1	
HIT-4068627	1	
HIT-4070047	1	
HIT-4087862	1	
HIT-4094811	1	
HIT-4094816	1	
HIT-4094817	1	
HIT-4103695	1	
HIT-4103705	1	
HIT-4104134	1	
HIT-4113178	1	
HIT-4113180	1	
HIT-4170546	1	
HIT-4170548	1	
HIT-4505081	1	
HIT-4505083	1	
HIT-4505752	1	
HIT-4509747	1	
HIT-4510854	1	
HIT-4510878	1	

HUSKY BRUTE

Kit Number	Kit Reference Number	Code (Pg. x)	Rod X Bore Size	
HB-790-030-004		P-V-8	2 X 4	
HB-790-030-015		I-U-10, 12	2 X 5	
HB-790-030-016		I-U-10, 12	2 X 5	
HB-790-030-017		I-U-10, 12	2-1/2 X 6	
HB-790-030-018		I-U-10, 12	2-1/2 X 6	
HB-790-030-019		I-U-10, 12	3 X 6	
HB-790-030-020		I-U-10, 12	2 X 5	
HB-790-030-022		I-U-10, 12	3-1/2 X 7	
HB-790-030-023		I-O-4	2-1/2 X 6	
HB-790-030-024		5" Piston Kit		
HB-790-035-501		P-OB-12	1-3/8 X 3-1/2	
HB-790-035-502		5" Piston Kit		
HB-790-035-504		P-OB-12	1-3/4 X 5	
HB-790-035-507		I-U-5	3 X 6	
HB-790-035-508		P-OB-12	2-1/2 X 6	
HB-790-035-510		I-U-5	2-1/2 X 5	
HB-790-035-519		I-V-9	2 X 4	
HB-790-035-530		I-U-4	4 X 6-1/4	
HB-790-035-531		I-U-5	4 X 7	
HB-790-035-536		P-U-11	3-1/2 X 6	
HB-790-120-019		I-U-5	4 X 7	
HB-790-121-092		I-U-10, 12	2 X 5	
HB-790-121-093		I-U-4	3-1/2 X 6	
HB-790-121-097	790-121-097	I-U-4	4 X 7	
HB-790-121-111		I-U-5	3 X 6	
HB-790-122-302		6" Piston Kit		
HB-790-200-011	790-200-011	I-U-5	2 X 3-1/2	
HB-790-200-023		I-U-4	2-1/2 X 5	
HBPMCK-D1192	790-035-50	P-OB-2,12	1-3/8 X 3-1/2	
HBPMCK-F715	CYL. # F715	I-N-10,12	2 X 5	
HBPMCK-F716	CYL. #716	I-U-10,12	2 X 5	
HBPMCK-F717	790-030-018	I-N-10,12	2-1/2 X 6	
HBPMCK-F718	CYL. #F718	I-U-10,12	2-1/2 X 6	
HBPMCK-F721	790-030-019	I-U-10,12	3 X 6	
HBPMCK-F726	CYL. #F726	I-U-10,12	2 X 5	
HBPMCK-G968	790-030-022	I-U-10,12	3-1/2 X 7	
HBPMCK-H163	CYL. #H163	I-N-4	2-1/2 X 6	
HBPMCK-H182	790-030-024	I-N-4	2 X 5	

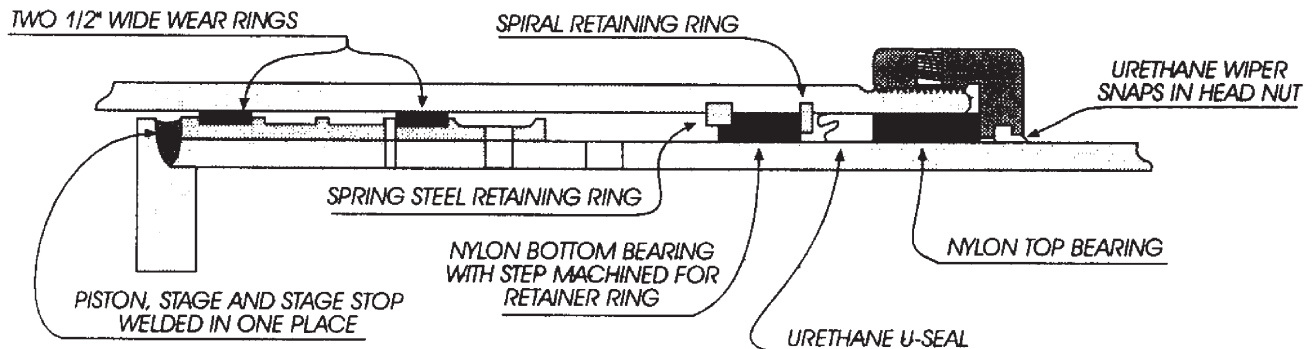
HYCO TELESCOPIC CYLINDERS

IMPORTANT NOTE

When ordering hyco telescopic parts it is helpful to provide a model number and serial number. The serial number is stamped into the base of the cylinder body or is just above the cylinder port. The serial number is the first four or five digits of the number. The last three or four digits indicates the date of manufacture.

EXAMPLE 12345 10 93
 SERIAL # MONTH YEAR

70,000 SERIES SINGLE ACTING



70,000 SERIES SINGLE ACTING

PACKING:	Normally uses urethane u-seals, but may be retrofitted with vee packing. All sizes 1/4" c.s.
WIPERS:	Urethane snap-in type.
BEARINGS:	Nylon bearings. Outer bearing is flat on the top and bottom. Inner bearing is "trapped" between two retainers. The bottom side of the inner bearing is "step-cut" on the o.d. to pilot over snap ring. c/s = .245"
PISTON:	Welded to stage. Uses 2 replaceable wear rings per stage.
STAGE O.D.'s:	3", 4", 5", 6", 7", 8-1/8", 9-3/8"
SPECIAL INFO.:	Spring steel type snap ring serves as internal stop. Uses a spiral retainer to "trap" lower bearing.
IDENTIFICATION:	Cylinder model number and serial number stamped on cylinder body near base of cylinder. Ex: 70000-815-180D

70,000 Series single action cylinders are manufactured to use urethane u-seals but may be retrofitted with a vee packing set if desired. We stock both types of packing for your convenience.

70,000 SERIES SINGLE ACTING PACKING SETS

We offer three types of packing for Hyco 70,000 series cylinders. Type 1 kits are identical to the original Hyco packing sets and utilize Parker u-seals. Type 2 kits are also identical to the Hyco sets but contain a lower cost Hallite manufactured u-seal. Type 3 kits contain a vee packing set retrofit for the original u-seal packing. The vee packing can be more effective in sealing an older cylinder with abrasive scoring or other surface blemishes.

HYCO TELESCOPIC CYLINDERS

70,000 SERIES CYLINDERS WITH K STYLE WIPER

HYCO

Part Number	Description	
TYPE 1: OEM U-SEALS, WIPERS, NYLON BEARINGS AND RETAINER KITS		
HYOE-034-00070-300	3" Pack Kit	
HYOE-034-00070-400	4" Pack Kit	
HYOE-034-00070-500	5" Pack Kit	
HYOE-034-00070-600	6" Pack Kit	
HYOE-034-00070-700	7" Pack Kit	
HYOE-034-00070-812	8-1/8" Pack Kit	
HYOE-034-00070-938	9-3/8" Pack Kit	
MULTIPLE STAGE KITS		
HYOE-034-00070-46	4 - 6"	
HYOE-034-00070-47	4 - 7"	
HYOE-034-00070-48-1/8	4 - 8-1/8"	
HYOE-034-00070-49-3/8	4 - 9-3/8"	
HYOE-034-00070-57	5 - 7"	
HYOE-034-00070-58-1/8	5 - 8-1/8"	
TYPE 2: U-SEALS, WIPERS, NYLON BEARINGS AND RETAINER KITS		
HY-034-00070-300	3" Pack Kit	
HY-034-00070-400	4" Pack Kit	
HY-034-00070-500	5" Pack Kit	
HY-034-00070-600	6" Pack Kit	
HY-034-00070-700	7" Pack Kit	
HY-034-00070-812	8-1/8" Pack Kit	
HY-034-00070-938	9-3/8" Pack Kit	
MULTIPLE STAGE KITS		
HY-034-00070-46	4 - 6"	
HY-034-00070-47	4 - 7"	
HY-034-00070-48-1/8	4 - 8-1/8"	
HY-034-00070-49-3/8	4 - 9-3/8"	
HY-034-00070-57	5 - 7"	
HY-034-00070-58-1/8	5 - 8-1/8"	

Part Number	Description	
TYPE 3: OPTIONAL VEE SETS, WIPERS, NYLON BEARINGS AND RETAINER KITS		
HY-034-00072-300	3" Pack Kit	
HY-034-00072-400	4" Pack Kit	
HY-034-00072-500	5" Pack Kit	
HY-034-00072-600	6" Pack Kit	
HY-034-00072-700	7" Pack Kit	
HY-034-00072-812	8-1/8" Pack Kit	
HY-034-00072-938	9-3/8" Pack Kit	
MULTIPLE STAGE KITS		
HY-034-00072-46	4" - 6"	
HY-034-00072-47	4" - 7"	
HY-034-00072-48-1/8	4" - 8-1/8"	
HY-034-00072-49-3/8	4" - 9-3/8"	
HY-034-00072-57	5" - 7"	
HY-034-00072-58-1/8	5" - 8-1/8"	

HYCO TELESCOPIC CYLINDERS

70,000 SERIES CYLINDERS

Part Number	Description	
TYPE 1: OEM U-SEALS, WIPERS, NYLON BEARINGS AND RETAINER KITS		
HYOE-B15252-300	3" Pack Kit	
HYOE-B15252-400	4" Pack Kit	
HYOE-B15252-500	5" Pack Kit	
HYOE-B15252-600	6" Pack Kit	
HYOE-B15252-700	7" Pack Kit	
HYOE-B15252-812	8-1/8" Pack Kit	
HYOE-B15252-938	9-3/8" Pack Kit	
MULTIPLE STAGE KITS		
HYOE-B15252-46	4" - 6"	
HYOE-B15252-47	4" - 7"	
HYOE-B15252-48-1/8	4" - 8-1/8"	
HYOE-B15252-57	5" - 7"	
TYPE 2: U-SEALS, WIPERS, NYLON BEARINGS AND RETAINER KITS		
HY-B15252-300	3" Pack Kit	
HY-B15252-400	4" Pack Kit	
HY-B15252-600	6" Pack Kit	
HY-B15252-700	7" Pack Kit	
HY-B15252-812	8-1/8" Pack Kit	
HY-B15252-938	9-3/8" Pack Kit	
MULTIPLE STAGE KITS		
HY-B15252-46	4" - 6"	
HY-B15252-47	4" - 7"	
HY-B15252-48-1/8	4" - 8-1/8"	
HY-B15252-49-3/8	4" - 9-3/8"	
HY-B15252-500	5" Pack Kit	
HY-B15252-57	5" - 7"	
HY-B15252-58-1/8	5" - 8-1/8"	

Part Number	Description	
TYPE 3: OPTIONAL VEE SETS, WIPERS, NYLON BEARINGS AND RETAINER KITS		
HY-B15255-300	3" Pack Kit	
HY-B15255-400	4" Pack Kit	
HY-B15255-500	5" Pack Kit	
HY-B15255-600	6" Pack Kit	
HY-B15255-700	7" Pack Kit	
HY-B15255-812	8-1/8" Pack Kit	
HY-B15255-938	9-3/8" Pack Kit	
MULTIPLE STAGE KITS		
HY-B15255-46	4" - 6"	
HY-B15255-47	4" - 7"	
HY-B15255-48-1/8	4" - 8-1/8"	
HY-B15255-49-3/8	4" - 9-3/8"	
HY-B15255-57	5" - 7"	
HY-B15255-58-1/8	5" - 8-1/8"	

HYCO TELESCOPIC CYLINDERS

70,000 SERIES CYLINDERS

INDIVIDUAL PARTS

HYCO

Part Number	Description	
RETAINER RINGS		
HY-B9971-5.5	5" Retainer Ring	
HY-B9971-6.5	6" Retainer Ring	
HY-B9971-7.5	7" Retainer Ring	
HY-B9971-862	8-1/8" Retainer Ring	
HY-B9971-988	9-3/8" Retainer Ring	
HY-083-50002-00350	3" Retainer Ring	
HY-083-50002-00450	4" Retainer Ring	
PISTON WEAR RINGS		
HY-10764-300	3-1/2" Nylon Piston Wear Ring	
HY-10764-400	4-1/2" Nylon Piston Wear Ring	
HY-10764-500	5-1/2" Nylon Piston Wear Ring	
HY-10764-600	6-1/2" Nylon Piston Wear Ring	
HY-10764-700	7-1/2" Nylon Piston Wear Ring	
HY-10764-812	8-5/8" Nylon Piston Wear Ring	
HY-10764-938	9-7/8" Nylon Piston Wear Ring	
MISCELLANEOUS PARTS		
HY-A2688	Manual Bleeder Valve	
HY-A20419	Set Screw for Headnut	
HY-A20420	Nylon Slug for Headnut	
INDIVIDUAL WIPERS		
HY-080-0005-300	3" Wiper	
HY-080-0005-400	4" Wiper	
HY-080-0005-500	5" Wiper	
HY-080-0005-600	6" Wiper	
HY-080-0005-700	7" Wiper	
HY-080-0005-800	8" Wiper	
HY-080-0005-812	8-1/8" Wiper	
HY-080-0005-912	9-1/8" Wiper	
HY-080-0005-938	9-3/8" Wiper	
MULTIPLE STAGE WIPER KITS		
HY-080-0005-46	4" - 6"	
HY-080-0005-47	4" - 7"	
HY-080-0005-48-1/8	4" - 7" & 8-1/8"	
HY-080-0005-49-1/8	4" - 8" & 9-1/8"	
HY-080-0005-49-3/8	4" - 7", 8-1/8" & 9-3/8"	
HY-080-0005-57	5" - 7"	
HY-080-0005-58-1/8	5" - 7" & 8-1/8"	

CAUTION:
Getting the correct Hyco headnut can be a problem. If you are unsure, call our sales department. Headnuts are measured at the I.D. of the wiper.

Part Number	Size - Wiper I.D.	
HEADNUTS		
HY-011-11001-125	9-3/8" Headnut	
HY-011-39001-125	3" Headnut	
HY-011-49003-125	4" Headnut	
HY-011-59002-125	5" Headnut	
HY-011-69002-125	6" Headnut	
HY-011-79002-125	7" Headnut	
HY-011-93001-125	8-1/8" Headnut	
Part Number	Description	
BEARINGS		
HY-B12075-3	3" Bearing	
HY-B12075-4	4" Bearing	
HY-B12075-5	5" Bearing	
HY-B12075-6	6" Bearing	
HY-B12075-7	7" Bearing	
HY-B12075-8	8" Bearing	
HY-B12075-8.12	8-1/8" Bearing	
HY-B12075-9.12	9-1/8" Bearing	
HY-B12075-9.38	9-3/8" Bearing	
U-SEALS		
HYOE-085-00001-0300	3" U-SEAL	
HYOE-085-00001-0400	4" U-SEAL	
HYOE-085-00001-0500	5" U-SEAL	
HYOE-085-00001-0600	6" U-SEAL	
HYOE-085-00001-0700	7" U-SEAL	
HYOE-085-00001-0812	8-1/8" U-SEAL	

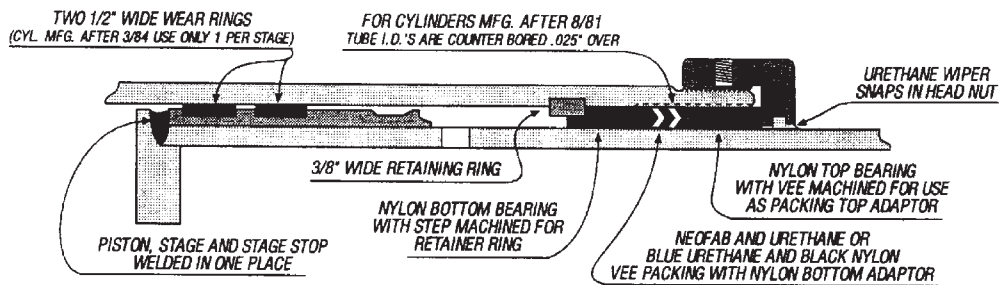
HYCO TELESCOPIC CYLINDERS

IMPORTANT NOTE

When ordering hyco telescopic parts it is helpful to provide a model number and serial number. The serial number is stamped into the base of the cylinder body or is just above the cylinder port. The serial number is the first four or five digits of the number. The last three or four digits indicates the date of manufacture.

EXAMPLE 12345 10 93
SERIAL # MONTH YEAR

30,000 SERIES SINGLE ACTING MANUFACTURED AFTER AUGUST 1, 1981



- PACKING:** Vee packing. Outer bearing serves as top adaptor for vee set. Note: Packing area is .025" over nominal bore. There is a "step" above the retainer ring groove where the bore dimension returns to nominal size.
- WIPERS:** Urethane snap-in type.
- BEARINGS:** Glass filled nylon. Outer bearing serves as top adaptor for vee set. Inner bearing is "step cut" on o.d. to pilot over snap ring.
- PISTON:** Welded to stage. Uses 1/2" wide replaceable wear rings as bearings. Cylinders manufactured 3/84 and before uses 2 wear rings per stage. Cylinders manufactured after 3/84 use 1 per stage.
- STAGE O.D.'s:** 3", 4", 5", 6", 7", 8", 8-1/8", 8-1/4", 9-1/8", 9-3/8"
- SPECIAL INFO.:** Packing area bore diameter is .025" over nominal dimension. 3/8" thick spring steel snap ring serves as internal stop.
- IDENTIFICATION:** Cylinder model number and serial number stamped on cylinder body near base of cylinder.
Ex: 30001-85-220

The plungers and cylinder tube assembly have a "step" on the inside diameter above retaining ring groove. As a result packing surface is .025" over the plunger base I.D.. Pack sets contain wiper, vee packing, glass filled nylon top & bottom bearings, retainer rings are 3/8" wide, piston guide rings 1/2" wide, cylinders manufactured after 3/84 may only use one wear ring per stage.

Part Number	Description
VEE PACKING, BUSHING AND WIPER KITS	
HY-14750-300	3" Pack Kit
HY-14750-400	4" Pack Kit
HY-14750-500	5" Pack Kit
HY-14750-600	6" Pack Kit
HY-14750-700	7" Pack Kit
HY-14750-800	8" Pack Kit
HY-14750-812	8-1/8" Pack Kit
HY-14750-825	8-1/4" Pack Kit
HY-14750-912	9-1/8" Pack Kit
HY-14750-938	9-3/8" Pack Kit

Part Number	Description
VEE PACKING, BUSHING AND WIPER KITS	
HY-14750-46	4 - 6" Pack Kit
HY-14750-47	4 - 7" Pack Kit
HY-14750-48	4 - 8" Pack Kit
HY-14750-482	4 - 8-1/4" Pack Kit
HY-14750-57	5 - 7" Pack Kit
HY-14750-58	5 - 8" Pack Kit
MAJOR REPAIR KITS	
Contain vee packing, bushings, wear rings, retainer rings and wipers.	
HY-MRK-14750-46	4" - 6"
HY-MRK-14750-47	4" - 7"
HY-MRK-14750-48	4" - 8"

HYCO TELESCOPIC CYLINDERS

70,000 SERIES CYLINDERS

INDIVIDUAL PARTS

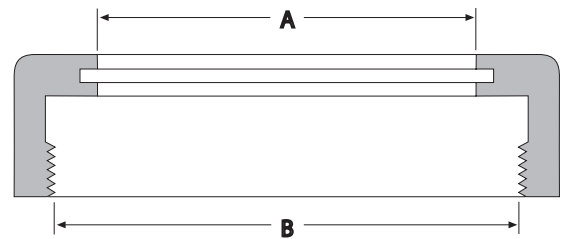
HYCO

Part Number	Description	
RETAINER RINGS		
HY-B9971-3.5	3" Retainer Ring	
HY-B9971-4.5	4" Retainer Ring	
HY-B9971-5.5	5" Retainer Ring	
HY-B9971-6.5	6" Retainer Ring	
HY-B9971-7.5	7" Retainer Ring	
HY-B9971-8.5	8" Retainer Ring	
HY-B9971-862	8-1/8" Retainer Ring	
HY-B9971-900	8-1/4" Retainer Ring	
HY-B9971-962	9-1/8" Retainer Ring - S.A.	
HY-B9971-988	9-3/8" Retainer Ring	
PISTON WEAR RINGS		
HY-10764-300	3-1/2" Nylon Piston Wear Ring	
HY-10764-400	4-1/2" Nylon Piston Wear Ring	
HY-10764-500	5-1/2" Nylon Piston Wear Ring	
HY-10764-600	6-1/2" Nylon Piston Wear Ring	
HY-10764-700	7-1/2" Nylon Piston Wear Ring	
HY-10764-800	8-1/2" Nylon Piston Wear Ring	
HY-10764-812	8-5/8" Nylon Piston Wear Ring	
HY-10764-825	9" Nylon Piston Wear Ring	
HY-10764-900	9-3/4" Nylon Piston Wear Ring	
HY-10764-938	9-7/8" Nylon Piston Wear Ring	
PISTON WEAR RING KITS		
HY-10764-46	4-1/2" - 6-1/2" Kit (1 ea. size)	
HY-10764-47	4-1/2" - 7-1/2" Kit (1 ea. size)	
HY-10764-48	4-1/2" - 8-1/2" Kit (1 ea. size)	
HY-10764-48.2	4-1/2" - 9" Kit (1 ea. size)	
HY-10764-49	4-1/2" - 9-3/4" Kit (1 ea. size)	
HY-10764-57	5-1/2" - 7-1/2" Kit (1 ea. size)	
HY-10764-58	5-1/2" - 8-1/2" Kit (1 ea. size)	
MISCELLANEOUS PARTS		
HY-ABV100	Automatic Bleeder Valve (For cylinders MFG prior to 1-1-88)	
HY-ABV103	Automatic Bleeder Valve with S.A.E. O-Ring Seals (For cylinders MFG after 1-1-88)	
HY-A20419	Set Screw for Headnut	
HY-A20420	Nylon Slug for Headnut	
HY-A20866	Nylon Slug & Set Screw	

HEADNUTS

CAUTION:

Getting the correct Hyco headnut can be a problem. If you are unsure, call our sales department. Headnuts are measured at the I.D. of the wiper.



Part Number	"A" Wiper I.D.	"B" Thread I.D.	Threads/Inch	
HY-A2527	3"	3.840"	12	
HY-A2217	4"	4.840"	12	
HY-A2216	5"	5.840"	12	
HY-A2215	6"	6.840"	12	
HY-A2406	7"	7.840"	12	
HY-A3535	7" Headnut			
HY-A20621	8"	9.020"	12	
		(For 30,000 Series prior to 9-1-87)		
HY-A22747	8"	8.990"	12	
		(For 30,000 Series after 9-1-87 and for threading on all 9-1/8" Stages)		
HY-A20558	8-1/8"	9.220"	12	
HY-A3534	8-1/4" Headnut			
HY-A22746	9-1/8"	10.170"	12	
		(For 30,000 Series after 9/81)		
HY-A20599	9-3/8"	10.670"	12	

NOTE:

REPLACEMENT STAGES AVAILABLE UPON REQUEST.
CYLINDER SERIAL NUMBER IS IMPORTANT

HYCO TELESCOPIC CYLINDERS

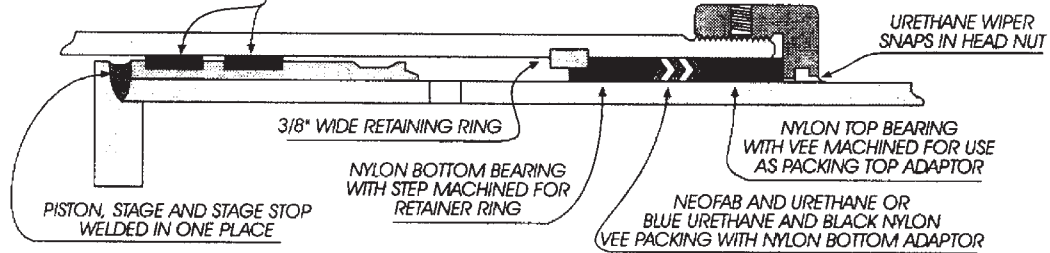
30,000 SERIES SINGLE ACTING

MANUFACTURED BEFORE AUGUST 1, 1981

20,000 SERIES DOUBLE ACTING

ALL

TWO 1/2" WIDE WEAR RINGS
(CYL. MFG. AFTER 3/84 USE ONLY 1 PER STAGE)



HYCO 30,000 SERIES

- PACKING:** Vee packing. Outer bearing serves as top adaptor for vee set. All packing is 1/4" cross section, except 9" stage has 3/8" c/s packing and 9-1/8" stage has 5/16" c/s packing.
- WIPERS:** Urethane snap-in type.
- BEARINGS:** Glass filled nylon. Outer bearing serves as top adaptor for vee set. Inner bearing is "step-cut" on o.d. to pilot over snap ring.
- PISTON:** Welded to stage. Uses 1/2" wide replaceable wear rings as bearings.
- STAGE O.D.'s:** 3", 4", 5", 6", 7", 8", 8-1/8", 8-1/4", 9", 9-1/8", 9-3/8"
- SPECIAL INFO.:** 3/8" spring steel snap ring serves as internal stop.
- IDENTIFICATION:** Cylinder model number and serial number stamped on cylinder body near base of cylinder. Ex: 30001-85-220

HYCO 20,000 SERIES DOUBLE ACTION

- PACKING:** Vee packing with bottom adaptor. 4" through 8" sizes 1/4" c.s.; 9" is 3/8" c.s.; 9-1/8" is 5/16".
- WIPERS:** Urethane snap-in type.
- BEARINGS:** Glass filled nylon. Top bearing serves as top adaptor for vee packing. Inner bearing is step-cut to pilot over snap ring.
- PISTON:** Welded to stage. Uses 1, 1/2" wide nylon wear ring and 2 iron piston rings in separate grooves.
- STAGE O.D.'s:** 3", 4", 5", 6", 7", 8", 9", 9-1/8"
- SPECIAL INFO.:** 3/8" spring steel snap ring serves as internal stop.
- IDENTIFICATION:** Cylinder model number and serial number stamped on cylinder body near base.

Part Number	Description
VEE PACKING, NYLON TOP & BOTTOM BEARINGS AND WIPER KITS	
HY-14411-300N	3" Pack Kit
HY-14411-400N	4" Pack Kit
HY-14411-500N	5" Pack Kit
HY-14411-600N	6" Pack Kit
HY-14411-700N	7" Pack Kit
HY-14411-800N	8" Pack Kit
HY-14411-812N	8-1/8" Pack Kit
HY-14411-825N	8-1/4" Pack Kit
HY-14411-900N	9" Pack Kit
HY-14411-912N	9-1/8" Pack Kit
HY-14411-938N	9-3/8" Pack Kit
MULTIPLE STAGE KITS	
HY-14411-46N	4" - 6" Pack Kit
HY-14411-47N	4" - 7" Pack Kit
HY-14411-48N	4" - 8" Pack Kit
HY-14411-491N	4" - 9-1/8" Pack Kit
HY-14411-49N	4" - 9" Pack Kit

Part Number	Description
VEE PACKING, BRONZE TOP BEARING, AND NYLON BOTTOM BEARING AND WIPER KITS	
HY-14411-300B	3" Pack Kit Hytrel & Fab Vees
HY-14411-400B	4" Pack Kit Hytrel & Fab Vees
HY-14411-500B	5" Pack Kit Hytrel & Fab Vees
HY-14411-600B	6" Pack Kit Hytrel & Fab Vees
HY-14411-700B	7" Pack Kit Hytrel & Fab Vees
HY-14411-800B	8" Pack Kit Hytrel & Fab Vees
HY-14411-812B	8-1/8" Pack Kit Hytrel & Fab Vees
HY-14411-825B	8-1/4" Pack Kit Hytrel & Fab Vees
HY-14411-900B	9" Pack Kit Hytrel & Fab Vees
HY-14411-912B	9-1/8" Pack Kit Hytrel & Fab Vees
HY-14411-938B	9-3/8" Pack Kit Hytrel & Fab Vees
Part Number	Stages
MAJOR REPAIR KITS - SINGLE ACTING Contains vee packing, bushings, wear rings, retainer rings and wipers.	
HY-MRK-14411-46	4" - 6"
HY-MRK-14411-47	4" - 7"
HY-MRK-14411-48	4" - 8"

HYCO TELESCOPIC CYLINDERS

30,000 SERIES CYLINDERS & 20,000 SERIES CYLINDERS

(MANUFACTURED BEFORE AUGUST 1, 1981)

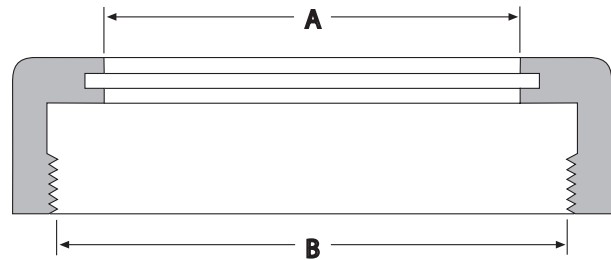
(ALL)

Part Number	Description	
RETAINER RINGS		
HY-B9971-3.5	3" Retainer Ring	
HY-B9971-4.5	4" Retainer Ring	
HY-B9971-5.5	5" Retainer Ring	
HY-B9971-6.5	6" Retainer Ring	
HY-B9971-7.5	7" Retainer Ring	
HY-B9971-8.5	8" Retainer Ring	
HY-B9971-862	8-1/8" Retainer Ring	
HY-B9971-900	8-1/4" Retainer Ring	
HY-B9971-962	9-1/8" Retainer Ring	
HY-B9971-970	9-1/8" Retainer Ring - D.A.	
HY-B9971-988	9-3/8" Retainer Ring	
PISTON WEAR RINGS		
HY-10764-300	3-1/2" Nylon Piston Wear Ring	
HY-10764-400	4-1/2" Nylon Piston Wear Ring	
HY-10764-500	5-1/2" Nylon Piston Wear Ring	
HY-10764-600	6-1/2" Nylon Piston Wear Ring	
HY-10764-700	7-1/2" Nylon Piston Wear Ring	
HY-10764-800	8-1/2" Nylon Piston Wear Ring	
HY-10764-812	8-5/8" Nylon Piston Wear Ring	
HY-10764-825	9" Nylon Piston Wear Ring	
HY-10764-900	9-3/4" Nylon Piston Wear Ring	
HY-10764-938	9-7/8" Nylon Piston Wear Ring	
PISTON WEAR RING KITS		
HY-10764-46	4-1/2" - 6-1/2" Kit (1 ea. size)	
HY-10764-47	4-1/2" - 7-1/2" Kit (1 ea. size)	
HY-10764-48	4-1/2" - 8-1/2" Kit (1 ea. size)	
HY-10764-48.2	4-1/2" - 9" Kit (1 ea. size)	
HY-10764-49	4-1/2" - 9-3/4" Kit (1 ea. size)	
HY-10764-57	5-1/2" - 7-1/2" Kit (1 ea. size)	
HY-10764-58	5-1/2" - 8-1/2" Kit (1 ea. size)	
CAST IRON PISTON RINGS FOR DOUBLE ACTING CYLINDERS 1/2" WIDE		
HY-B12071-3	3-1/2 Cast Iron Piston Ring	
HY-B12071-4	4-1/2 Cast Iron Piston Ring	
HY-B12071-49	4-1/2-9-3/4 Cast Iron Piston Ring Kit	
HY-B12071-5	5-1/2 Cast Iron Piston Ring	
HY-B12071-6	6-1/2 Cast Iron Piston Ring	
HY-B12071-7	7-1/2 Cast Iron Piston Ring	
HY-B12071-8	8-1/2 Cast Iron Piston Ring	
HY-B12071-812	8-5/8 Cast Iron Piston Ring	
HY-B12071-9	9-3/4 Cast Iron Piston Ring	
HY-B12071-938	9-7/8 Cast Iron Piston Ring	

Part Number	Description	
MISCELLANEOUS PARTS		
DD-HA 2401	2" ID X 2" Wide Pin Eye Bushing	
HY-A20419	Set Screw for Headnut	
HY-A20420	Nylon Slug for Headnut	
HY-A20866	Nylon Slug & Set Screw	
HY-A2688	1/8" NPT Manual Bleeder Valve	
HY-ABV100	Automatic Bleeder Valve	

HEADNUTS

CAUTION:
Getting the correct Hyco headnut can be a problem. If you are unsure, call our sales department. Headnuts are measured at the I.D. of the wiper.



Part Number	"A" Wiper I.D.	"B" Thread I.D.	Threads/Inch	
HY-A2527	3"	3.840"	12	
HY-A2217	4" Headnut			
HY-A2216	5"	5.840"	12	
HY-A2215	6"	6.840"	12	
HY-A2406	7"	7.840"	12	
HY-A3535	7"	8.100"	12	
		(For threading on 8-1/4" Stage)		
HY-A22747	8"	8.990"	12	
		(For 30,000 Series after 9-1-87 and for threading on all 9-1/8" Stages)		
HY-A20621	8"	9.020"	12	
		(For 30,000 Series prior to 9-1-87)		
HY-A3534	8-1/4"	9.780"	12	
HY-A20558	8-1/8"	9.220"	12	
HY-A22483	9-1/8"		12	
HY-A22746	9-1/8"	10.170"	12	
		(For 30,000 Series after 9/81)		
HY-A20599	9-3/8"	10.670"	12	

HYCO TELESCOPIC CYLINDERS

20,000 SERIES CYLINDERS WITH K-STYLE WIPERS

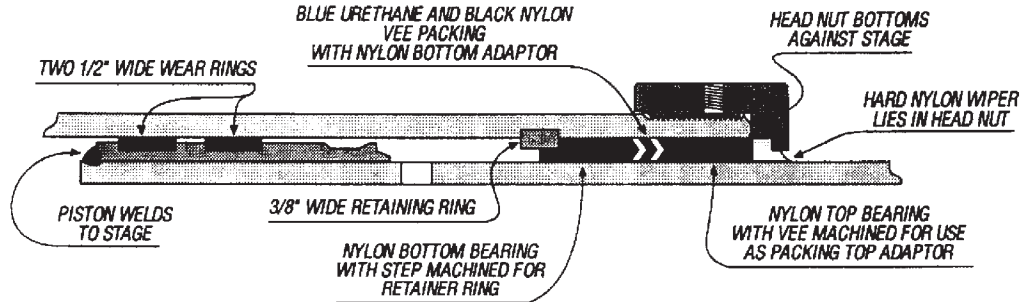
Part Number	Description	
MAJOR REPAIR KITS - SINGLE ACTING		
HY-MRK-034-00020-46	4" - 6" Pack Kit	
HY-MRK-034-00020-47	4" - 7" Pack Kit	
HY-MRK-034-00020-48	4" - 8" Pack Kit	
VEE PACKING, BRONZE TOP & NYLON BOTTOM BEARINGS AND 2 WIPER KITS		
HY-034-00020-300B	3" Pack Kit	
HY-034-00020-400B	4" Pack Kit	
HY-034-00020-500B	5" Pack Kit	
HY-034-00020-600B	6" Pack Kit	
HY-034-00020-700B	7" Pack Kit	
HY-034-00020-800B	8" Pack Kit	
HY-034-00020-812B	8.12" Pack Kit	
HY-034-00020-912B	9.12" Pack Kit	
HY-034-00020-938B	9.38" Pack Kit	

Part Number	Description	
VEE PACKING, NYLON TOP & BOTTOM BEARINGS AND 2 WIPER KITS		
HY-034-00020-300N	3" Pack Kit	
HY-034-00020-400N	4" Pack Kit	
HY-034-00020-500N	5" Pack Kit	
HY-034-00020-600N	6" Pack Kit	
HY-034-00020-700N	7" Pack Kit	
HY-034-00020-800N	8" Pack Kit	
HY-034-00020-812N	8.12" Pack Kit	
HY-034-00020-912N	9.12" Pack Kit	
HY-034-00020-938N	9.38" Pack Kit	
MULTIPLE STAGE KITS		
HY-034-00020-46N	4" - 6" Pack Kit	
HY-034-00020-47N	4" - 7" Pack Kit	
HY-034-00020-48N	4" - 8" Pack Kit	
HY-034-00020-491N	4" - 9-1/8" Pack Kit	

HYCO TELESCOPIC CYLINDERS

10,000 SERIES CYLINDER CYLINDERS

MANUFACTURED FROM JULY, 1974 THROUGH AUGUST, 1976



- PACKING:** Vee packing. Outer bearing serves as top adapter for vee set.
- WIPERS:** Hard black nylon. Does NOT snap into a groove. Wiper is "trapped" between head nut and top bearing.
- BEARINGS:** Glass filled nylon. Outer bearing serves as top adapter for vee set. Inner bearing is "step-cut" to pilot over snap ring.
- PISTON:** Welded to stage. Uses 2 replaceable 1/2" wide wear rings. Pistons are open through the bottom; they have no "plug", so a smaller stage will pass out through the bottom of the piston on a larger stage when the headnut is removed and the stages are removed from the cylinder body.
- STAGE O.D.'s:** 3", 4", 5", 6", 7", 8", 8-1/4"
- SPECIAL INFO.:** 3/8" spring steel snap ring serves as internal stop. Rod eye threads into stage.
- IDENTIFICATION:** Cylinder model number and serial number stamped on cylinder body near base.

For all 10,000 Series Single Acting Cylinders manufactured from 7/74 through 8/76, kits include hard black wipers, vee sets and top and bottom bearings.

Part Number	Description
PISTON WEAR RINGS	
HY-10764-400	4-1/2" Nylon Piston Wear Ring
HY-10764-500	5-1/2" Nylon Piston Wear Ring
HY-10764-600	6-1/2" Nylon Piston Wear Ring
HY-10764-700	7-1/2" Nylon Piston Wear Ring
HY-10764-800	8-1/2" Nylon Piston Wear Ring
HY-10764-825	9" Nylon Piston Wear Ring
RETAINER RINGS	
HY-B9971-4.5	4" Retainer Ring
HY-B9971-5.5	5" Retainer Ring
HY-B9971-6.5	6" Retainer Ring
HY-B9971-7.5	7" Retainer Ring
HY-B9971-8.5	8" Retainer Ring
HY-B9971-900	8-1/4" Retainer Ring

Part Number	Description
VEE PACKING, NYLON TOP & BOTTOM BEARINGS AND WIPER KITS	
HY-11426-300	3" Pack Kit
HY-11426-400	4" Pack Kit
HY-11426-500	5" Pack Kit
HY-11426-600	6" Pack Kit
HY-11426-700	7" Pack Kit
HY-11426-800	8" Pack Kit
HY-11426-825	8-1/4" Pack Kit
MULTIPLE STAGE KITS	
HY-11426-48	4" - 8" Pack Kit

HYCO TELESCOPIC CYLINDERS

IMPORTANT NOTE:

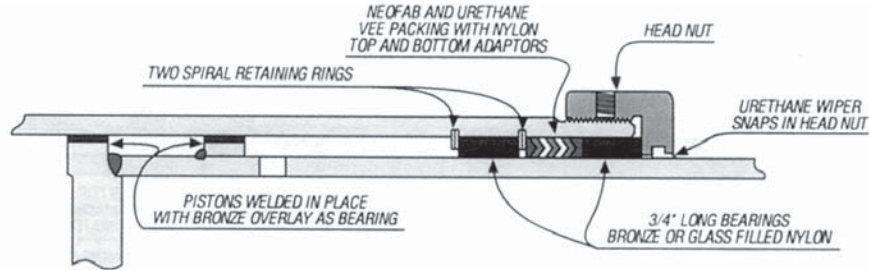
WHEN ORDERING HYCO TELESCOPIC PARTS IT IS HELPFUL TO PROVIDE A MODEL NUMBER AND SERIAL NUMBER. THE SERIAL NUMBER IS STAMPED ONTO A METAL TAG APPLIED TO THE CYLINDER BODY. THE SERIAL NUMBER IS THE FIRST FOUR OR FIVE DIGITS OF THE NUMBER. THE LAST THREE OR FOUR DIGITS INDICATES THE DATE OF MANUFACTURE.

EXAMPLE 12345 10 93
 SERIAL # MONTH YEAR

C900 - C2000 SERIES SINGLE ACTING

MANUFACTURED BEFORE JULY 10, 1974

C9000 SERIES DOUBLE ACTING ALL



- PACKING: Vee packing with nylon top and bottom adaptors 1/4" c.s. on 4" through 8".
- WIPERS: Urethane snap-in type.
- BEARINGS: 2 bearings, one above the vee packing and the other "trapped" between the two spiral retainers. Original bearings were bronze. Currently many replacements are glass filled or mineral filled nylon.
- PISTON: Single acting cylinders have piston welded to stage. Piston bearings are bronze overlay on steel nylon. Double acting cylinders have steel piston which threads onto stage. Contains 2, 1/2" wide nylon wear rings and 2 cast iron piston rings in common groove.
- STAGE O.D.'s: 3", 4", 5", 6", 7", 8", 8-1/4", 9", 9-3/4"
- SPECIAL INFO.: 2 spiral retaining rings with bearings "trapped" between them serving as internal stop.
- IDENTIFICATION: Cylinder model number and serial number stamped on metal tag applied to cylinder body.

For all C900 - C2000 Series single acting cylinders manufactured before 7/74 and all C9000 Series double acting telescopic, pack kits include only the wiper and vee packing. Nylon and bronze bearings are offered separately.

Part Number	Description
INDIVIDUAL STAGE VEE PACKING AND WIPER SETS	
HY-2VSW	2" Packing & Wiper
HY-3VSW	3" Packing & Wiper
HY-4VSW	4" Packing & Wiper
HY-5VSW	5" Packing & Wiper
HY-6VSW	6" Packing & Wiper
HY-7VSW	7" Packing & Wiper
HY-8VSW	8" Packing & Wiper
HY-8.25VSW	8-1/4" Packing & Wiper
HY-9VSW	9" Packing & Wiper
HY-9.37VSW	9-3/8" Packing & Wiper
HY-9.75VSW	9-3/4" Packing & Wiper

Part Number	Description
MULTIPLE STAGE VEE PACKING AND WIPER SETS	
HY-35	3" - 5" Pack Kit
HY-36	3" - 6" Pack Kit
HY-38	3" - 8" Pack Kit
HY-46	4" - 6" Pack Kit
HY-47	4" - 7" Pack Kit
HY-48	4" - 8" Pack Kit
HY-48-1/4	4" - 8-1/4" Pack Kit
HY-49	4" - 9" Pack Kit
HY-57	5" - 7" Pack Kit
HY-58	5" - 8" Pack Kit
HY-59-3/4	5" - 9-3/4" Pack Kit

HYCO TELESCOPIC CYLINDERS

C900 - C2000 SERIES SINGLE ACTING

AND

C9000 SERIES DOUBLE ACTING

MANUFACTURED BEFORE JULY10, 1974

ALL

HYCO

Part Number	Description	
NYLON BEARINGS		
HY-A18415N	9" Nylon Bearing	
HY-A2225N	6" Nylon Bearing	
HY-A2226N	5" Nylon Bearing	
HY-A2227N	4" Nylon Bearing	
HY-A2411N	7" Nylon Bearing	
HY-A2447N	8" Nylon Bearing	
HY-A2475N	3" Nylon Bearing	
HY-A3438N	8-1/4" Nylon Bearing	
NYLON BEARING KITS		
HY-NYB38	2 ea. 3" - 8" Nylon Bearings	
HY-NYB46	2 ea. 4" - 6" Nylon Bearings	
HY-NYB47	2 ea. 4" - 7" Nylon Bearings	
HY-NYB48	2 ea. 4" - 8" Nylon Bearings	
HY-NYB48-1/4	2 ea. 4" - 8-1/4" Nylon Bearings	
HY-NYB49	2 ea. 4" - 9" Nylon Bearings	
HY-NYB57	2 ea. 5" - 7" Nylon Bearings	
HY-NYB58	2 ea. 5" - 8" Nylon Bearings	
BRONZE BEARINGS		
HY-A18415B	9" Bronze Bearing	
HY-A2225B	6" Bronze Bearing	
HY-A2226B	5" Bronze Bearing	
HY-A2227B	4" Bronze Bearing	
HY-A2411B	7" Bronze Bearing	
HY-A2447B	8" Bronze Bearing	
HY-A2475B	3" Bronze Bearing	
HY-A3438B	8-1/4" Bronze Bearing	
HY-A8258	9-3/4" Bottom Bronze Bearing	
HY-A8308	9-3/4" Top Bronze Bearing	
SPIRAL RETAINERS		
HY-A17793	5" Spiral Retainer	
HY-A17794	4" Spiral Retainer	
HY-A18387	9" Spiral Retainer	
HY-A2228	6" Spiral Retainer	
HY-A2477	3" Spiral Retainer	
HY-A3012	7" Spiral Retainer	
HY-A3013	8" Spiral Retainer	
HY-A4616	8-1/4" Spiral Retainer	
HY-A8246	9-3/4" Spiral Retainer	
SPIRAL RETAINER KITS		
HY-SR48	2 ea. 4" - 8" Spiral Retainers	
HY-SR49	2 ea. 4" - 9" Spiral Retainers	
HY-SR58	2 ea. 5" - 8" Spiral Retainers	

Part Number	Description	
PISTON RINGS Double Acting Only		
HY-A18025	8-1/2" O.D. Cast Iron Piston Ring	
HY-A18026	7-1/2" O.D. Cast Iron Piston Ring	
HY-A18027	6-1/2" O.D. Cast Iron Piston Ring	
HY-A18028	5-1/2" O.D. Cast Iron Piston Ring	
HY-A18029	4-1/2" O.D. Cast Iron Piston Ring	
HY-A18385	9-3/4" O.D. Cast Iron Piston Ring	
PISTON RING KITS Double Acting Only		
HY-PR48	2 ea. 4-1/2"-8-1/2" Piston Rings	
HY-PR49	2 ea. 4-1/2"-9-3/4" Piston Rings	
PISTON WEAR RINGS Double Acting Only		
HY-10764-400	4-1/2" O.D. Piston Wear Ring	
HY-10764-500	5-1/2" O.D. Piston Wear Ring	
HY-10764-600	6-1/2" O.D. Piston Wear Ring	
HY-10764-700	7-1/2" O.D. Piston Wear Ring	
HY-10764-800	8-1/2" O.D. Piston Wear Ring	
HY-10764-900	9-3/4" O.D. Piston Wear Ring	
NYLON PISTON WEAR RING KITS Double Acting Only		
HY-NPB48	2 ea. 4-1/2"-8-1/2" Piston Wear Rings	
HY-NPB49	2 ea. 4-1/2"-9-3/4" Piston Wear Rings	
HEADNUTS		
Getting the correct Hyco headnut can be a problem. If you are unsure, call our sales department. Headnuts are measured at the I.D. of the wiper.		
HY-A2527	3" Headnut	
HY-A2217	4" Headnut	
HY-A2216	5" Headnut	
HY-A2215	6" Headnut	
HY-A3535	7" Headnut	
HY-A2406	7" Headnut	
HY-A2442	8" Headnut	
HY-A3534	8-1/4" Headnut	
HY-A18411	9" Headnut	

HYCO PISTON-ROD CYLINDERS

Kit Number	Cylinder Number	Code (Pg. x)	Rod X Bore Size
HY-A18881	C4979	I-V-12	2 X 4-1/2
HY-A22227	C6312	I-V-5	2 X 4
HY-A22228	C6404	I-N-4	2-1/2 X 3-1/2
HY-A22229	C6403	I-V-5	2-1/2 X 6
HY-A22230	C6443	I-V-5	2 X 5
HY-A22231	C6402	I-V-5	3 X 5
HY-A22286	C6304	I-U-5	3 X 5
HY-A22368	C5845	I-U-5	2-1/2 X 5
HY-A22891	C6591	I-U-5	3-1/2 X 4-1/2
HY-C2062K	C2062	I-V-9	2 X 6-1/2
HY-C2526K	C2526	I-V-7	2-1/2 X 5
HY-C2670K	C2670	I-V-5	2 X 3-1/4
HY-C2672K	C2672	I-V-5	2-1/2 X 5
HY-C2699K	C2699	I-V-5	2 X 4
HY-C3571K	C3571	I-V-9	1-1/2 X 3-1/2
HY-C3650K	C3650	I-V-5	3 X 6
HY-C3651K	C3651	I-V-5	3 X 7
HY-C4658K	C4658	I-V-5	3 X 7
HY-C4794K	C4794	I-V-5	3 X 7
HY-C4797K	C4797	I-V-9	3 X 7
HY-C6217K	C6217	I-V-9	2 X 6
HY-C6410K	C6410	I-U-5	2 X 4
HY-C6429K	C6429	I-V-5	3 X 7

HYDRO-AX

Kit Number	Code (Pg. x)	Rod X Bore Size
HA-2401-1046	P-V-12	2 X 3-1/2
HA-2401-1097	I-U-11	2 x 3-1/2
HA-2401-1100	I-U-11	1-1/4 X 3
HA-3002-1016	I-U-10	2 X 3-1/2
HA-3002-1031	I-U-10	1-1/2 X 3
HA-3002-1086	I-U-10	2-1/2 X 5-1/2
HA-3002-1092	P-U-10	1-1/4 X 2-1/2
HA-8711016	I-U-10	2 X 3-1/2
HA-8711031	I-U-10	1-1/2 X 3
HA-8711056	I-U-10	2-1/2 X 4-1/2
HA-8711086	I-U-10	2-1/2 X 5-1/2
HA-8711090	I-U-10	3 X 6
HA-8804019	I-U-11	2 X 3-1/2
HA-8804032	I-U-11	2-1/2 X 4
HA-8804048	I-U-13	1-1/2 X 3
HA-8804062	I-U-11	1-1/4 X 2-1/2
HA-8804076	I-U-13	2-1/2 X 4-1/2
HA-8804094	I-U-11	3 X 6
HA-8804105	I-U-13	2-1/2 X 5-1/2
HA-8804125	I-U-11	4-1/2 X 8
HA-8804138	I-U-11	4 X 7

HYDRO-AX

Kit Number	Code (Pg. x)	Rod X Bore Size
HA-8804178	I-U-13	2-1/2 X 5
HA-8804197	I-U-11	4 X 6
HA-8804213	I-U-11	4-1/2 X 8
HA-8804214	I-U-11	4 X 7
HA-8804232	I-U-11	4 X 6

HYSTER

Kit Number	Code (Pg. x)	Rod X Bore Size
HYS-1332565	I-U-N	1-7/8 X 2-1/4
HYS-1334570	I-U-4	3-1/2 X 4
HYS-1334571	I-N-5	4 X 4-1/2
HYS-133462	I-V-1	1-3/4" Rod
HYS-144267		O-Ring Kit
HYS-148292	N-N-8	3-1/4" Piston Kit
HYS-148414	I-V-1	1-3/4" Rod
HYS-149193	N-N-P	2-1/2" Bore
HYS-149194	P-V-1	1-3/4 x 2-1/2
HYS-149254	I-V-1	1-3/4" Rod
HYS-149258	P-V-1	2" Rod
HYS-149259	N-V-1	2-1/4" Rod
HYS-149260	I-V-1	1-1/4" Rod
HYS-149292		O-Ring Kit
HYS-1494726	P-U-10	1-3/4 X 4
HYS-168801	N-U-12	1 X 3
HYS-170881	P-V-8	1-1/4 X 3
HYS-2026822	P-U-10	35 X 65 mm
HYS-226074	I-U-8	1-1/2 X 3-1/2
HYS-2302714	I-U-11	28 mm X 2-1/2
HYS-2303974	I-U-1	3 X 3-3/4
HYS-250050	P-U-10	1-1/2 X 3-1/2
HYS-250051	P-U-10	1-1/4 X 3
HYS-250550	I-U-4	4-1/4 X 6
HYS-250559	I-U-4	5-1/4 X 7-1/2
HYS-250603	I-U-8	1 X 2-1/2
HYS-250937	I-U-8	1-1/2 X 3.525
HYS-250943	I-U-1	3.70, 5.45 STAGES
HYS-280182	I-O-10	1 X 2-1/4
HYS-280537	I-U-4	2-1/8 X 2-1/2
HYS-281474	P-U-10	1-1/2 X 3-1/2
HYS-281815	I-U-10	1-3/4 X 3-1/2
HYS-281822	I-U-10	1-1/4 X 3
HYS-281855	I-U-10, 12	1-3/4 X 3-1/2
HYS-281859	I-U-10, 12	2-1/4 X 3-1/2
HYS-281864	I-U-10	1-3/4 X 3-1/2
HYS-314993	O-RING KIT	
HYS-318005	I-U-1	2-3/4, 3-3/4 STAGES
HYS-321758	I-U-10	2-1/4 X 4-1/2

HYSTER

Kit Number	Code (Pg. x)	Rod X Bore Size	
HYS-321909	I-U-5	3 X 4-3/4	
HYS-323645	I-U-8	1-3/4 X 4	
HYS-327393	I-U-4	2-1/8 X 2-1/2	
HYS-328074	I-U-10	1-1/4 X 2-3/4	
HYS-328121	P-U-10	1-1/4 X 3	
HYS-328226	P-U-10	1-3/4 X 4-1/4	
HYS-333742	P-U-10	2-1/8 X 3	
HYS-334997	I-U-10	1-1/4 X 2-3/4	
HYS-337281	I-U-4	1-3/8 X 2	
HYS-339347	I-U-4	2 STAGES, 4 - 5"	

Kit Number	Code (Pg. x)	Rod X Bore Size	
HYS-340079	N-U-4	1-3/4 X 2-3/4	
HYS-355695	P-U-10	1-3/8 X 3	
HYS-355909	I-U-5	1-1/2 X 4	
HYS-381762	I-U-10	2-7/8 X 4-1/2	
HYS-383991	P-U-10	1-1/4 X 3	
HYS-48628	I-U-4	3/4 X 1-5/8	
HYS-629326	Hose Reel Kit		
HYS-639456	I-U-4	3 X 3-1/2	
HYS-643280	I-U-4	3 X 3-1/2	

HYUNDAI

Replacement Kits For

Excavators				
APPLICATION	CODE	ROD	BORE	KIT #
MODEL 130LC				
ARM	P-UB-10	80 mm	115 mm	HYU-91E6-2712
BOOM	P-UB-10	75 mm	105 mm	HYU-91E6-2711
BUCKET	P-UB-10	70 mm	100 mm	HYU-91E6-2713
MODEL R200LC, R210LC				
ARM	P-UB-14	95 mm	140 mm	HYU-91E1-2707
BOOM	P-UB-14	85 mm	125 mm	HYU-91E1-2706
BUCKET	P-UB-14	80 mm	120 mm	HYU-91E1-2708
MODEL R280LC, R320LC-1				
ARM	P-UB-10	105 mm	150 mm	HYU-91E2-2708
BOOM	P-UB-10	95 mm	145 mm	HYU-91E2-2707
BUCKET	P-UB-10	95 mm	145 mm	HYU-91E2-2709
MODEL R420LC, R450LC				
ARM	P-UB-14	120 mm	185 mm	HYU-31E7-2712
BOOM	P-UB-14	110 mm	160 mm	HYU-31E7-2711
BUCKET	P-UB-14	110 mm	160 mm	HYU-31E7-2713

HYUNDAI

Kit Number	Code (Pg. x)	Rod X Bore Size	
HYU-31E7-2711	P-UB-14	110 X 160 mm	
HYU-31E7-2712	P-UB-14	120 X 185 mm	
HYU-31E7-2713	P-UB-14	110 X 160 mm	
HYU-31Y1-05260	P-UB-14	85 X 125	
HYU-91E1-2706	P-UB-14	85 X 125 mm	
HYU-91E1-2707	P-UB-14	95 X 140 mm	
HYU-91E1-2708	P-UB-14	80 X 120 mm	
HYU-91E2-2707	P-UB-10	95 X 145 mm	

Kit Number	Code (Pg. x)	Rod X Bore Size	
HYU-91E2-2708	P-UB-10	105 X 150 mm	
HYU-91E2-2709	P-UB-10	95 X 145 mm	
HYU-91E6-2711	P-UB-10	75 X 105 mm	
HYU-91E6-2712	P-UB-10	80 X 115 mm	
HYU-91E6-2713	P-UB-10	70 X 100 mm	
HYU-91E8-2707	P-UB-14	100 X 140 mm	
HYU-91E8-2708	P-UB-14	110 X 160 mm	
HYU-91E8-2709	P-UB-14	100 X 140 mm	