

## TA2 Series Air Powered Utility Winches

TA series air winches are built to last, combining a reliable radial piston motor with rugged welded-steel construction, ensuring that Thern BIG RED air winches will get the job done again and again. And with quick delivery the Thern BIG RED air winches will be ready when you are.

### Standard Winch Features

- **Radial piston air motor** provides reliable power and incorporates a positive internal splash lubrication system for long life.
- **Highly sensitive control valve** provides smooth forward and reverse control with variable speed which allows for spotting at low speed and long lifts at high speeds.
- **Manual band brake** with heavy-duty steel band construction provides up to 150% winch capacity. Long brake handle adds durability and requires less force to engage.
- **Planetary gears** operate in an oil bath. Double lip oil seals keep oil in and contaminants out.
- **Welded steel frame** captures both drum ends for added strength and security.
- **Meets ASME B30.7 design requirements.**
- **Wire rope assemblies** sold separately.
- **Two-year limited warranty.**



drum guard



Model TA2-24MX1

### Options and Accessories

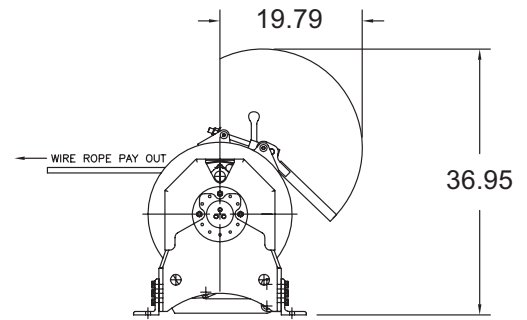
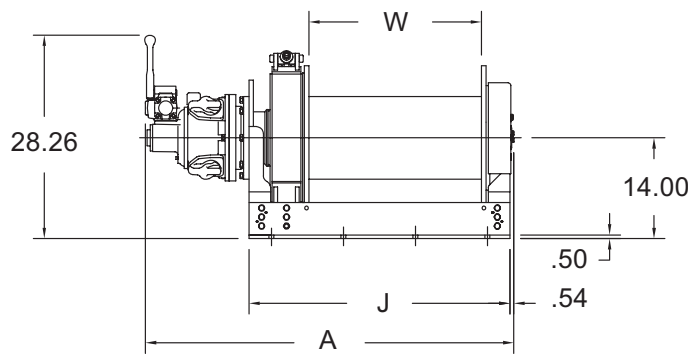
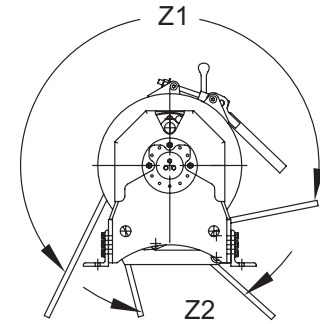
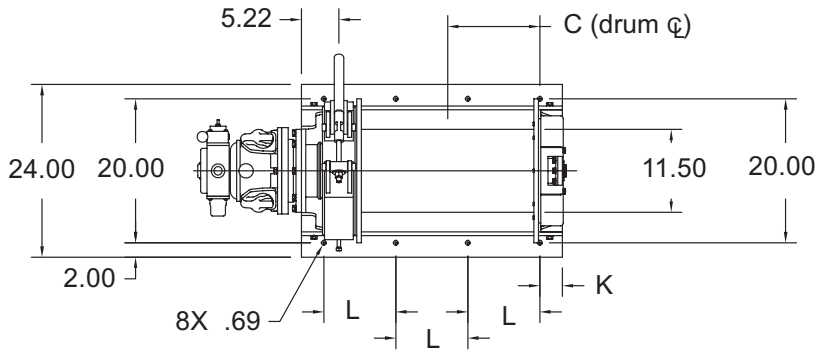
- **Automatic disc brake** is spring engaged, air pressure released, and is oil cooled for extended duty cycles and long life.
- **Automatic band brake** is spring engaged, air pressure released, and has heavy-duty construction that provides up to 150% holding capacity. **Replaces manual band brake.**
- **Control options** include winch mounted full flow pendant control and remote control valve.
- **Filter, lubricator and regulator package** to maintain air quality to the winch.
- **Muffler kit** installs to exhaust ports to reduce air noise.
- **Drum guard** constructed of steel mesh, helps protect operator from harm and is adjustable for different rope pay-out angles.
- **Line guide** constructed of steel and hand operated to help wire rope wind uniformly.
- **Individual ABS Survey** available upon request.
- **Winch cage** is built from heavy steel and provides convenient method for transport and tie down and helps protect winch from damage.
- **Heavy duty marine grade epoxy finish** with zinc rich primer for protection in harsh environments.
- **Other options:** many other options and drum modifications available, please contact factory.



automatic band brake



line guide



Dimensions are for reference only and subject to change without notice.

**TA2 Series Performance Characteristics**

	TA2-16 Series	TA2-24 Series
Load Rating 1st Layer	7200 lb	7200 lb
Load Rating Mid-Drum	5700 lb	5700 lb
Load Rating Full Drum	4700 lb	4700 lb
Line Speed 1st Layer	30 fpm	30 fpm
Line Speed Mid-Drum	38 fpm	38 fpm
Line Speed Full Drum	46 fpm	46 fpm
Drum Capacity 1st Layer	83 ft	130 ft
Drum Capacity Mid-Drum	380 ft	570 ft
Drum Capacity Full Drum	850 ft	1270 ft
Input HP	6.7 hp	6.7 hp
Max. Stall Pull 1st Layer	9000 lb	9000 lb
Wire Rope Diameter	.5 in	.5 in
Pressure	90 psi	90 psi
Flow	250 scfm	250 scfm
Pipe Inlet Size	1 in	1 in
Hose Size	1.25 in	1.25 in
Approx. Ship Weight	1000 lb	1100 lb

**TA2 Series Dimensions**

item	TA2-16MX1	TA2-24MX1
A	43.25 in	51.25 in
C	9.06 in	12.81 in
J	28.50 in	36.00 in
K	2.88 in	3.13 in
L	7.50 in	10.00 in
W	16.00 in	24.00 in
Z1	223°	223°
Z2	34°	34°
bolt hole size/grade	5/8 in - G8	5/8 in - G8

**IMPORTANT:**

It is the owner's or operator's responsibility to determine the suitability of the equipment to its intended use. Study all applicable codes, manuals and regulations. Be sure to read the Owner's Manual supplied with the equipment before operating it.

## TA2.5 Series Air Powered Utility Winches

TA series air winches are built to last, combining a reliable radial piston motor with rugged welded-steel construction, ensuring that Thern BIG RED air winches will get the job done again and again. And with quick delivery the Thern BIG RED air winches will be ready when you are.

### Standard Winch Features

- **Radial piston air motor** provides reliable power and incorporates a positive internal splash lubrication system for long life.
- **Highly sensitive control valve** provides smooth forward and reverse control with variable speed which allows for spotting at low speed and long lifts at high speeds.
- **Manual band brake** with heavy-duty steel band construction provides up to 150% winch capacity. Long brake handle adds durability and requires less force to engage.
- **Planetary gears** operate in an oil bath. Double lip oil seals keep oil in and contaminants out.
- **Welded steel frame** captures both drum ends for added strength and security.
- **Meets ASME B30.7 design requirements.**
- **Wire rope assemblies** sold separately.
- **Two-year limited warranty.**



drum guard



Model TA2.5-16AX1 shown with optional drum guard, and automatic band brake

### Options and Accessories

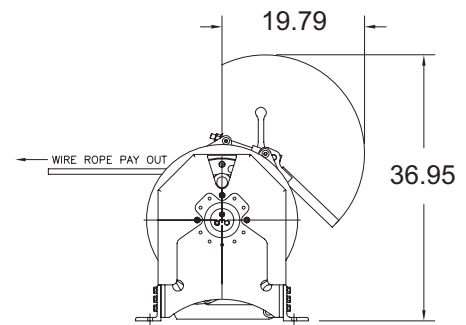
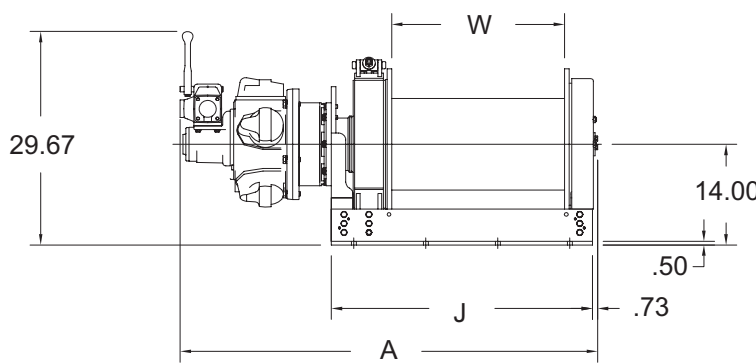
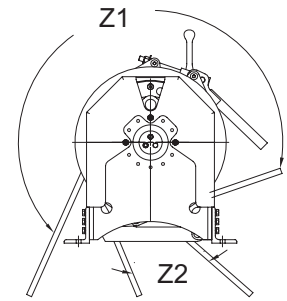
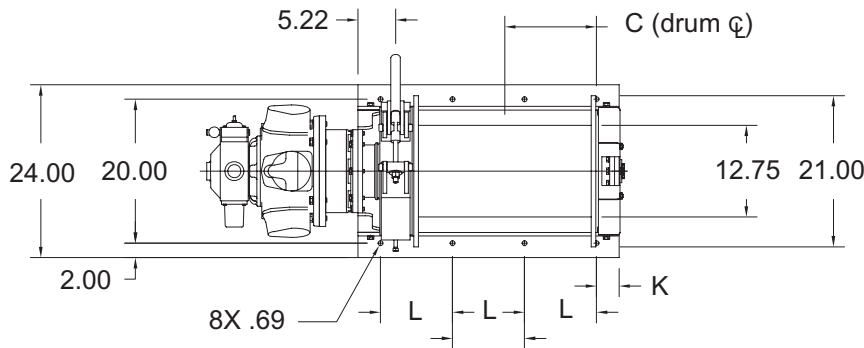
- **Automatic disc brake** is spring engaged, air pressure released, and is oil cooled for extended duty cycles and long life.
- **Automatic band brake** is spring engaged, air pressure released, and has heavy-duty construction that provides up to 150% holding capacity.  
**Replaces manual band brake.**
- **Control options** include winch mounted full flow pendant control and remote control valve.
- **Filter, lubricator and regulator package** to maintain air quality to the winch.
- **Muffler kit** installs to exhaust ports to reduce air noise.
- **Drum guard** constructed of steel mesh, helps protect operator from harm and is adjustable for different rope pay-out angles.
- **Line guide** constructed of steel and hand operated to help wire rope wind uniformly.
- **Individual ABS Survey** available upon request.
- **Winch cage** is built from heavy steel and provides convenient method for transport and tie down and helps protect winch from damage.
- **Heavy duty marine grade epoxy finish** with zinc rich primer for protection in harsh environments.
- **Other options:** many other options and drum modifications available, please contact factory.



automatic band brake



line guide



Dimensions are for reference only and subject to change without notice.

**TA2.5 Series Performance Characteristics**

	TA2.5-16 Series	TA2.5-24 Series
Load Rating 1st Layer	7200 lb	7200 lb
Load Rating Mid-Drum	5900 lb	5900 lb
Load Rating Full Drum	5000 lb	5000 lb
Line Speed 1st Layer	69 fpm	69 fpm
Line Speed Mid-Drum	84 fpm	84 fpm
Line Speed Full Drum	100 fpm	100 fpm
Drum Capacity 1st Layer	71 ft	110 ft
Drum Capacity Mid-Drum	260 ft	390 ft
Drum Capacity Full Drum	580 ft	860 ft
Input HP	15.7 hp	15.7 hp
Max. Stall Pull 1st Layer	11,000 lb	11,000 lb
Wire Rope Diameter	.63 in	.63 in
Pressure	90 psi	90 psi
Flow	550 scfm	550 scfm
Pipe Inlet Size	1.5 in	1.5 in
Hose Size	1.5 in	1.5 in
Approx. Ship Weight	1615 lb	1700 lb

**TA2.5 Series Dimensions**

item	TA2.5-16MX1	TA2.5-24MX1
A	50.00 in	58.00
C	9.00 in	12.75
J	28.50 in	36.00
K	2.88 in	3.13
L	7.50 in	10.00
W	16.00 in	24.00
Z1	228°	228°
Z2	27°	27°
bolt hole size/grade	5/8 in - G8	5/8 in - G8

**IMPORTANT:**

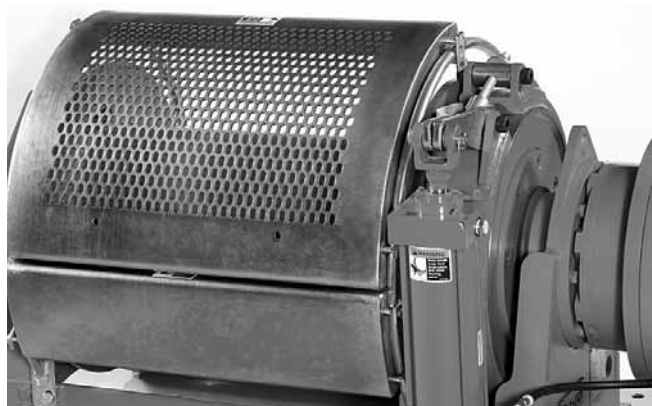
It is the owner's or operator's responsibility to determine the suitability of the equipment to its intended use. Study all applicable codes, manuals and regulations. Be sure to read the Owner's Manual supplied with the equipment before operating it.

## TA5 Series Air Powered Utility Winches

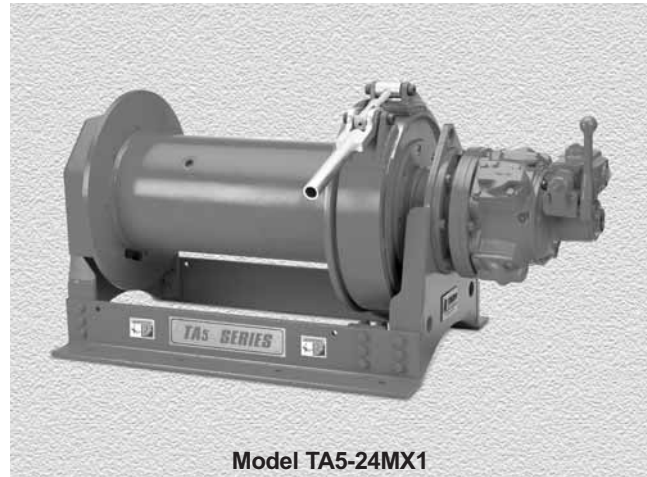
TA series air winches are built to last, combining a reliable radial piston motor with rugged welded-steel construction, ensuring that Thern BIG RED air winches will get the job done again and again. And with quick delivery the Thern BIG RED air winches will be ready when you are.

### Standard Winch Features

- **Radial piston air motor** provides reliable power and incorporates a positive internal splash lubrication system for long life.
- **Highly sensitive control valve** provides smooth forward and reverse control with variable speed which allows for spotting at low speed and long lifts at high speeds.
- **Manual band brake** with heavy-duty steel band construction provides up to 150% winch capacity. Long brake handle adds durability and requires less force to engage.
- **Planetary gears** operate in an oil bath. Double lip oil seals keep oil in and contaminants out.
- **Welded steel frame** captures both drum ends for added strength and security.
- **Meets ASME B30.7 design requirements.**
- **Wire rope assemblies** sold separately.
- **Two-year limited warranty.**



drum guard



Model TA5-24MX1

### Options and Accessories

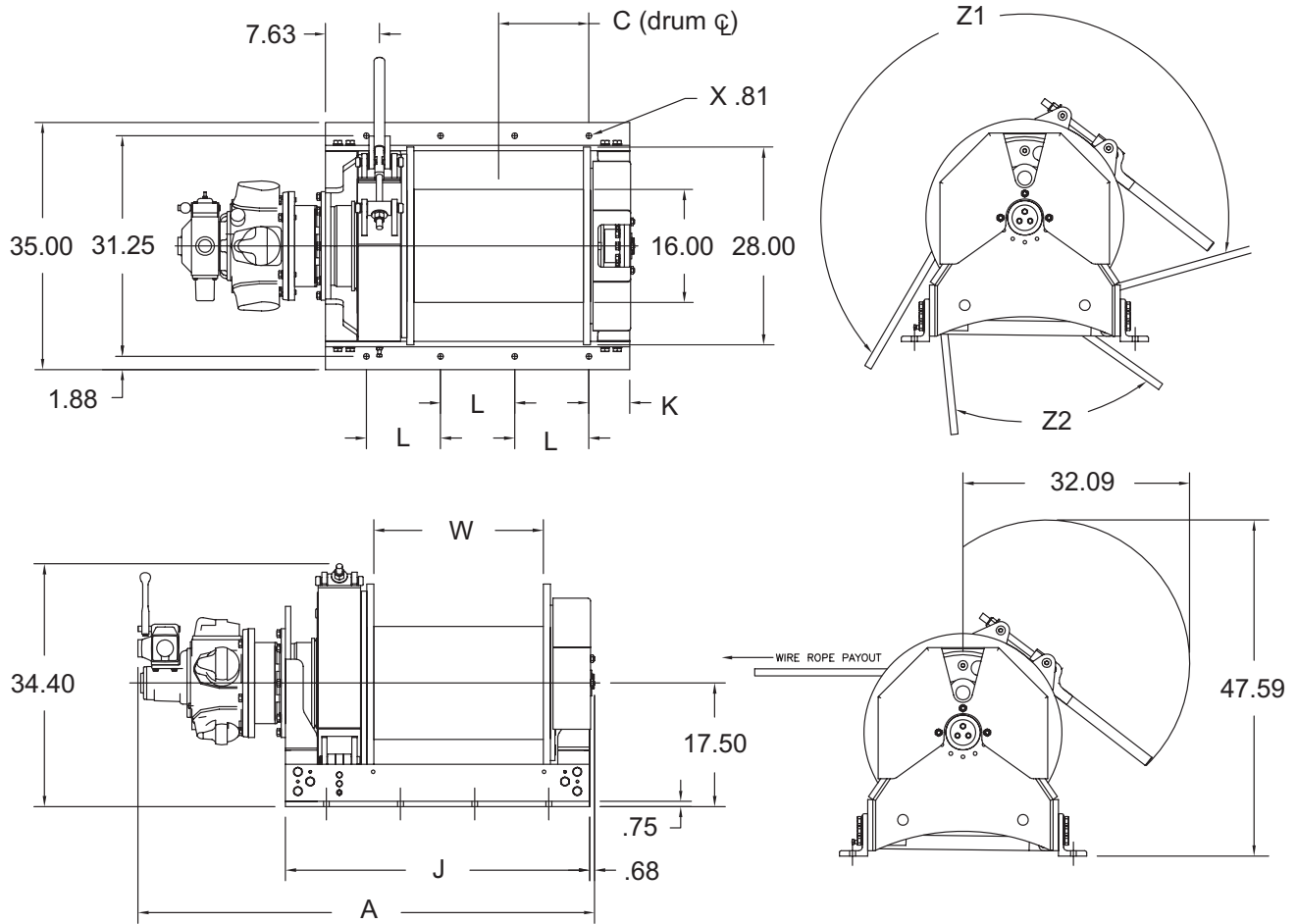
- **Automatic disc brake** is spring engaged, air pressure released, and is oil cooled for extended duty cycles and long life.
- **Automatic band brake** is spring engaged, air pressure released, and has heavy-duty construction that provides up to 150% holding capacity.  
**Replaces manual band brake.**
- **Control options** include winch mounted full flow pendant control and remote control valve.
- **Filter, lubricator and regulator package** to maintain air quality to the winch.
- **Muffler kit** installs to exhaust ports to reduce air noise.
- **Drum guard** constructed of steel mesh, helps protect operator from harm and is adjustable for different rope pay-out angles.
- **Line guide** constructed of steel and hand operated to help wire rope wind uniformly.
- **Individual ABS Survey** available upon request.
- **Winch cage** is built from heavy steel and provides convenient method for transport and tie down and helps protect winch from damage.
- **Heavy duty marine grade epoxy finish** with zinc rich primer for protection in harsh environments.
- **Other options:** many other options and drum modifications available, please contact factory.



automatic band brake



line guide



Dimensions are for reference only and subject to change without notice.

**TA5 Series Performance Characteristics**

	TA5-16 Series	TA5-24 Series	TA5-30 Series
<b>Load Rating 1st Layer</b>	18,000 lb	18,000 lb	18,000 lb
<b>Load Rating Mid-Drum</b>	14,000 lb	14,000 lb	14,000 lb
<b>Load Rating Full Drum</b>	11,500 lb	11,500 lb	11,500 lb
<b>Line Speed 1st Layer</b>	27 fpm	27 fpm	27 fpm
<b>Line Speed Mid-Drum</b>	35 fpm	35 fpm	35 fpm
<b>Line Speed Full Drum</b>	42 fpm	42 fpm	42 fpm
<b>Drum Capacity 1st Layer</b>	72 ft	120 ft	150 ft
<b>Drum Capacity Mid-Drum</b>	360 ft	550 ft	680 ft
<b>Drum Capacity Full Drum</b>	810 ft	1210 ft	1520 ft
<b>Input HP</b>	15.4 hp	15.4 hp	15.4 hp
<b>Max. Stall Pull 1st Layer</b>	33,000 lb	33,000 lb	33,000 lb
<b>Wire Rope Diameter</b>	.75 in	.75 in	.75 in
<b>Pressure</b>	90 psi	90 psi	90 psi
<b>Flow</b>	550 scfm	550 scfm	550 scfm
<b>Pipe Inlet Size</b>	1.5 in	1.5 in	1.5 in
<b>Hose Size</b>	1.5 in	1.5 in	1.5 in
<b>Approx. Ship Weight</b>	2460 lb	2625 lb	2750 lb

**TA5 Series Dimensions**

item	TA5-16MX1	TA5-24MX1	TA5-30MX1
A	56.75 in	64.75 in	70.75 in
C	10.53 in	12.78 in	17.03 in
J	35.60 in	43.06 in	49.06 in
K	4.03 in	5.78 in	4.53 in
L	9.00 in	10.50 in	10.00 in
W	16.00 in	24.00 in	30.00 in
No. of bolt holes	8	8	10
Z1	224°	224°	224°
Z2	50°	50°	50°
bolt hole size/grade	3/4 in - G8	3/4 in - G8	3/4 in - G8

**IMPORTANT:**

It is the owner's or operator's responsibility to determine the suitability of the equipment to its intended use. Study all applicable codes, manuals and regulations. Be sure to read the Owner's Manual supplied with the equipment before operating it.

## TA7 Series Air Powered Utility Winches

TA series air winches are built to last, combining a reliable radial piston motor with rugged welded-steel construction, ensuring that Thern BIG RED air winches will get the job done again and again. And with quick delivery the Thern BIG RED air winches will be ready when you are.

### Standard Winch Features

- **Radial piston air motor** provides reliable power and incorporates a positive internal splash lubrication system for long life.
- **Highly sensitive control valve** provides smooth forward and reverse control with variable speed which allows for spotting at low speed and long lifts at high speeds.
- **Manual band brake** with heavy-duty steel band construction provides up to 150% winch capacity. Long brake handle adds durability and requires less force to engage.
- **Planetary gears** operate in an oil bath. Double lip oil seals keep oil in and contaminants out.
- **Welded steel frame** captures both drum ends for added strength and security.
- **Meets ASME B30.7 design requirements.**
- **Wire rope assemblies** sold separately.
- **Two-year limited warranty.**



drum guard



Model TA7-36AX1

### Options and Accessories

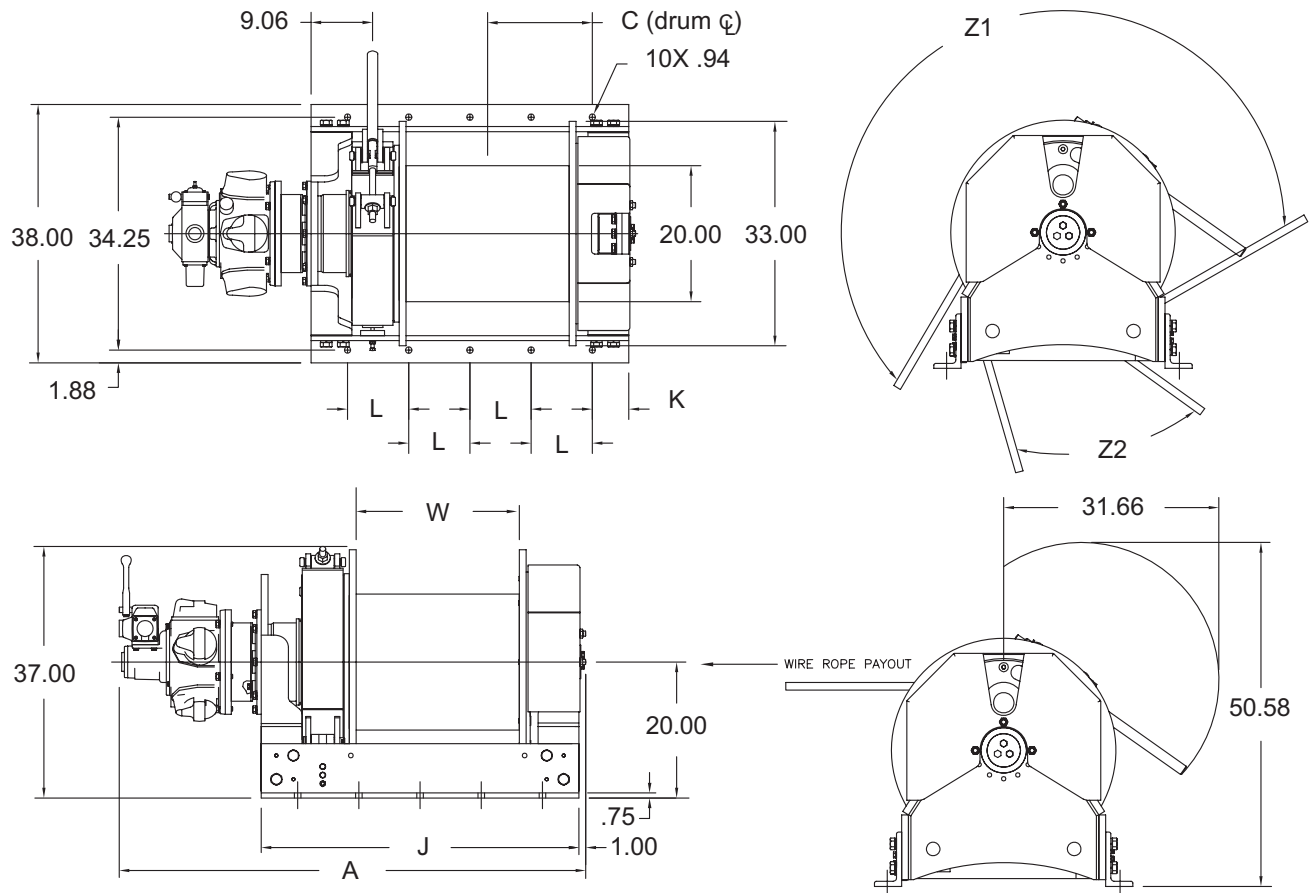
- **Automatic disc brake** is spring engaged, air pressure released, and is oil cooled for extended duty cycles and long life.
- **Automatic band brake** is spring engaged, air pressure released, and has heavy-duty construction that provides up to 150% holding capacity. **Replaces manual band brake.**
- **Control options** include winch mounted full flow pendant control and remote control valve.
- **Filter, lubricator and regulator package** to maintain air quality to the winch.
- **Muffler kit** installs to exhaust ports to reduce air noise.
- **Drum guard** constructed of steel mesh, helps protect operator from harm and is adjustable for different rope pay-out angles.
- **Line guide** constructed of steel and hand operated to help wire rope wind uniformly.
- **Individual ABS Survey** available upon request.
- **Winch cage** is built from heavy steel and provides convenient method for transport and tie down and helps protect winch from damage.
- **Heavy duty marine grade epoxy finish** with zinc rich primer for protection in harsh environments.
- **Other options:** many other options and drum modifications available, please contact factory.



automatic band brake



line guide



Dimensions are for reference only and subject to change without notice.

**TA7 Series Performance Characteristics**

	TA7-24 Series	TA7-30 Series	TA7-36 Series
<b>Load Rating 1st Layer</b>	23,600 lb	23,600 lb	23,600 lb
<b>Load Rating Mid-Drum</b>	19,000 lb	19,000 lb	19,000 lb
<b>Load Rating Full Drum</b>	15,900 lb	15,900 lb	15,900 lb
<b>Line Speed 1st Layer</b>	19 fpm	19 fpm	19 fpm
<b>Line Speed Mid-Drum</b>	24 fpm	24 fpm	24 fpm
<b>Line Speed Full Drum</b>	29 fpm	29 fpm	29 fpm
<b>Drum Capacity 1st Layer</b>	120 ft	160 ft	190 ft
<b>Drum Capacity Mid-Drum</b>	520 ft	650 ft	780 ft
<b>Drum Capacity Full Drum</b>	1150 ft	1440 ft	1730 ft
<b>Input HP</b>	14.4 hp	14.4 hp	14.4 hp
<b>Max. Stall Pull 1st Layer</b>	38,000 lb	38,000 lb	38,000 lb
<b>Wire Rope Diameter</b>	.88 in	.88 in	.88 in
<b>Pressure</b>	90 psi	90 psi	90 psi
<b>Flow</b>	550 scfm	550 scfm	550 scfm
<b>Pipe Inlet Size</b>	1.5 in	1.5 in	1.5 in
<b>Hose Size</b>	1.5 in	1.5 in	1.5 in
<b>Approx. Ship Weight</b>	3435 lb	3620 lb	3800 lb

**TA7 Series Dimensions**

item	TA7-24 MX1	TA7-30MX1	TA7-36MX1
A	68.75 in	74.75 in	80.75 in
C	15.41 in	17.41 in	19.41 in
J	46.75 in	52.75 in	58.75 in
K	5.38 in	6.38 in	7.38 in
L	9.00 in	10.00 in	11.00 in
W	24.00 in	30.00 in	36.00 in
Z1	210	210	210
Z2	39	39	39
bolt hole size/grade	7/8 in - G8	7/8 in - G8	7/8 in - G8

**IMPORTANT:**

It is the owner's or operator's responsibility to determine the suitability of the equipment to its intended use. Study all applicable codes, manuals and regulations. Be sure to read the Owner's Manual supplied with the equipment before operating it.