

Hook Suspension Trolleys



Series 632 Close Radius Trolley

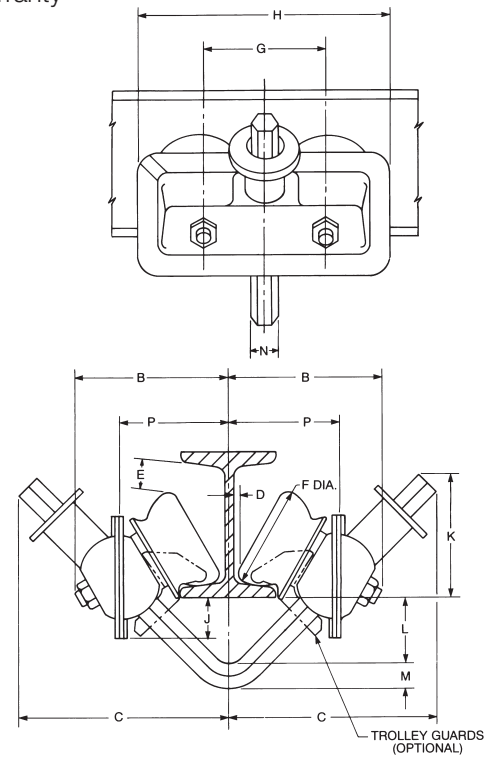
- Negotiates radius curves as tight as 7" - 10"
- Made of the highest quality rolled steel
- Unique double row, ball bearing wheel design provides five times greater wear capacity
- Larger V-bars available for wider flange adjustment
- For low headroom applications
- Bearings prepacked with lifetime lubricant
- Exclusive Dial-Fit collar quickly adapts trolley to a wide range of beams and patented rails
- Dust covers shield and protect bearings
- Trolleys available for larger beams, rails and tracks; contact factory
- Cast iron trolley guards available (except for 3 ton)
- Lifetime Warranty

A Compact Close Radius Trolley

With revolutionary advances, this shorter, more compact trolley is 50% lighter than competitive trolleys, yet every bit as tough.

Specifications & Dimensions

Capacity*	Model #	Adj. for standard S-beam						Min. Radius Curve
		Depth of Beam	Flange width	Tread diameter	Net weight	Ship Weight		
tons		in	in	in	lbs	lbs	in	
1/4 & 1/2	B3222	4-12	2-5/8 to 5-1/16	2-3/4	9	11	7	
1	B3224	4-12	2-5/8 to 5-1/16	2-3/4	10	12	7	
1-1/2 & 2	B3226	6-15	3-3/8 to 5-5/8	3-1/2	23	25	10	
3	B3230	8-18	4 to 6-1/4	3-1/2	29	32	10	



Capacity**	Model #	B	C	D	E	F	G	H	J	K	L	M	N	P	Q	R
tons		in	in	in	in	in	in	in	in	in	in	in	in	in	in	in
1/4 & 1/2	B3222	4-1/4	5-7/8	3/16	13/16	2-3/4	3-3/8	7	1-1/8	3-3/8	1-13/16	11/16	7/8	3	-	-
1	B3224	4-3/8	6	3/16	13/16	2-3/4	3-3/8	7	1-1/8	3-1/2	1-5/8	7/8	1	3-1/8	-	-
1-1/2 & 2	B3226	5-5/8	7-1/2	3/8	2-3/16	3-1/2	4-1/2	9	1-1/2	4-3/8	2	1-1/8	1-1/4	3-7/8	-	-
3	B3230	6-3/16	8-1/16	11/16	4-1/16	3-1/2	4-1/2	9	1-5/8	4-13/16	2-5/8	1-1/8	1-1/4	4-15/16	1/8	1-7/8

* All capacities can be supplied for S-beams larger than listed and also for wide flange beams, rails or track with approximately equivalent flange widths

** Dimensions given are for minimum S-beam and will vary with larger beams